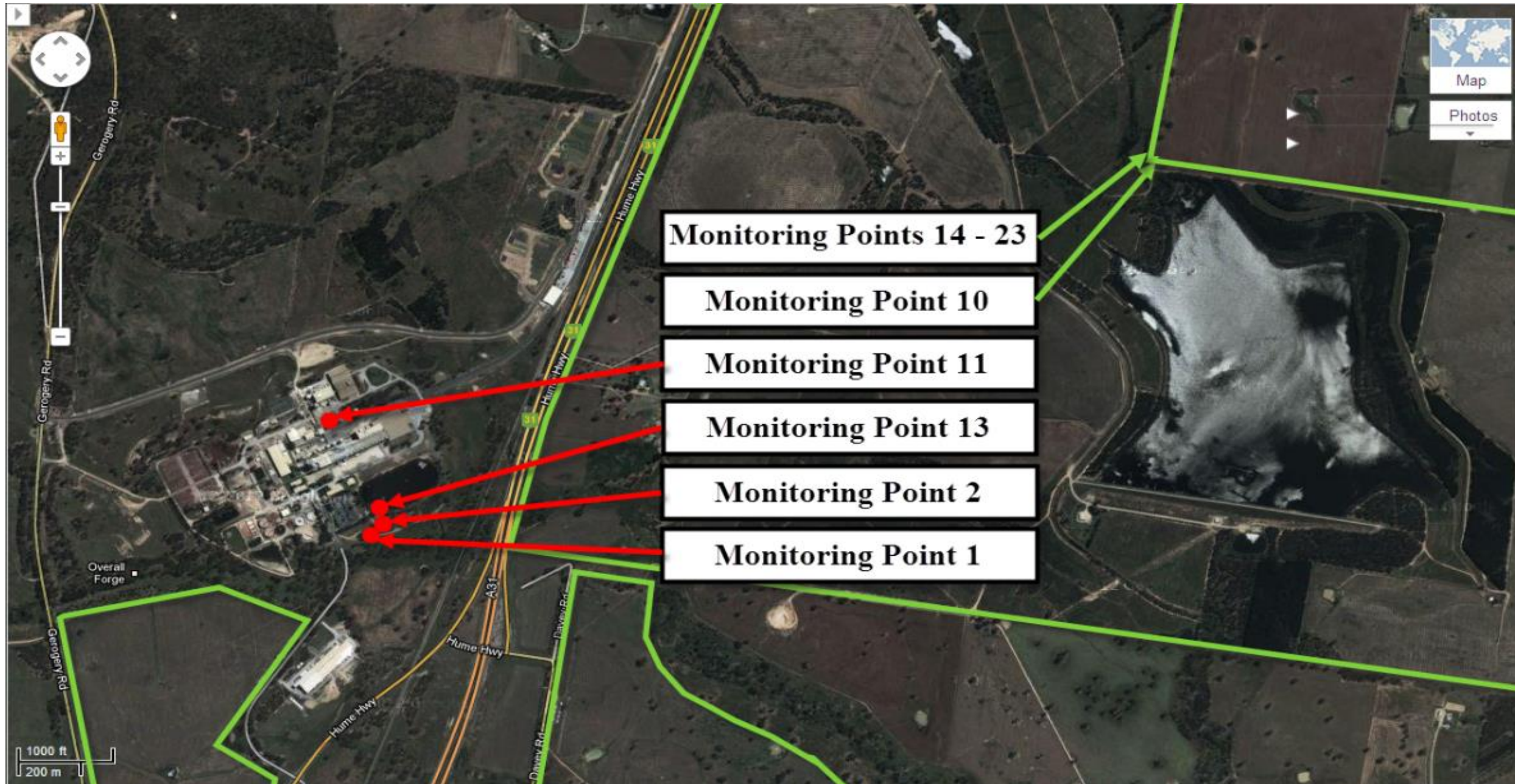


A full copy of our license can be found on the EPA website under the following address
<http://www.epa.nsw.gov.au/prpoeoapp/ViewPOEOLicence.aspx?DOCID=32757&SYSUID=1&LICID=1272>

Result data last updated 18 August 2015

Map of Norske Skog Albury Paper Mills Environmental Protection Licence compliance monitoring sites



Courtesy of Google Maps

Monitoring point 1

Discharge to waters, Effluent quality and volume monitoring

Pollutant	Units of measure	Licence requirements			July						August						September					
		Monitoring frequency required when discharging	0 percentile limit	100 percentile limit	Number of results	Minimum Value	Mean Value	Median Value	Maximum Value	Exceedance (yes/no)	Number of results	Minimum Value	Mean Value	Median Value	Maximum Value	Exceedance (yes/no)	Number of results	Minimum Value	Mean Value	Median Value	Maximum Value	Exceedance (yes/no)
		Biochemical Oxygen Demand	Milligrams per Litre	Weekly	-	20	0	-	-	-	-	-	0	-	-	-	-	-	4	7	12.0	12
Chemical Oxygen Demand	Milligrams per Litre	Weekly	-	-	0	-	-	-	-	-	0	-	-	-	-	-	4	200	223	215	260	no
Colour	Hazen	Weekly	-	-	0	-	-	-	-	-	0	-	-	-	-	-	4	250	300	300	350	no
Copper	Milligrams per Litre	Quarterly	-	0.05	0	-	-	-	-	-	0	-	-	-	-	-	1	-	0.01	-	-	no
Nitrogen (Ammonia)	Milligrams per Litre	Weekly	-	3.0	0	-	-	-	-	-	0	-	-	-	-	-	4	< 0.2	0.05	< 0.2	0.2	no
Nitrogen (Total)	Milligrams per Litre	Weekly	-	15	0	-	-	-	-	-	0	-	-	-	-	-	4	2.1	2.20	2.2	2.4	no
Oil and Grease	Milligrams per Litre	Weekly	-	10	0	-	-	-	-	-	0	-	-	-	-	-	4	< 1	< 1	< 1	< 1	no
pH	pH	Weekly	6.5	8.5	0	-	-	-	-	-	0	-	-	-	-	-	4	8.0	8.18	8.1	8.5	no
Phosphorus (Total)	Milligrams per Litre	Weekly	-	0.5	0	-	-	-	-	-	0	-	-	-	-	-	4	0.12	0.19	0.19	0.26	no
Total Dissolved Solids	Milligrams per Litre	Weekly	-	2000	0	-	-	-	-	-	0	-	-	-	-	-	4	720	755	750	800	no
Total Suspended Solids	Milligrams per Litre	Weekly	-	20	0	-	-	-	-	-	0	-	-	-	-	-	4	8.00	12.00	12.50	15.00	no
Zinc	Milligrams per Litre	Monthly	-	0.4	0	-	-	-	-	-	0	-	-	-	-	-	1	-	0.02	-	-	no
				Monthly Samples Collected													8 September 2014					
				Monthly Results Obtained													26 September 2014					
				Monthly Results Published													2 October 2014					
				Quarterly Samples Collected													8 September 2014					
				Quarterly Results Obtained													26 September 2014					
				Quarterly Results Published													2 October 2014					

Pollutant	Units of measure	Licence requirements			October						November						December					
		Monitoring frequency required when discharging	0 percentile limit	100 percentile limit	Number of results	Minimum Value	Mean Value	Median Value	Maximum Value	Exceedance (yes/no)	Number of results	Minimum Value	Mean Value	Median Value	Maximum Value	Exceedance (yes/no)	Number of results	Minimum Value	Mean Value	Median Value	Maximum Value	Exceedance (yes/no)
		Biochemical Oxygen Demand	Milligrams per Litre	Weekly	-	20	2	25	27.0	27	29	yes	0	-	-	-	-	-	1	5	5.0	5
Chemical Oxygen Demand	Milligrams per Litre	Weekly	-	-	2	280	290	290	300	no	0	-	-	-	-	-	1	200	200	200	200	no
Colour	Hazen	Weekly	-	-	2	300	325	325	350	no	0	-	-	-	-	-	1	350	350	350	350	no
Copper	Milligrams per Litre	Quarterly	-	0.05	0	-	-	-	-	-	0	-	-	-	-	-	1	-	0.00	-	-	no
Nitrogen (Ammonia)	Milligrams per Litre	Weekly	-	3.0	2	< 0.2	0.05	0.1	0.1	no	0	-	-	-	-	-	1	0.8	0.80	0.8	0.8	no
Nitrogen (Total)	Milligrams per Litre	Weekly	-	15	2	3.2	3.70	3.7	4.2	no	0	-	-	-	-	-	1	3.1	3.10	3.1	3.1	no
Oil and Grease	Milligrams per Litre	Weekly	-	10	2	< 1	4.50	4.50	9.00	no	0	-	-	-	-	-	1	< 1	< 1	< 1	< 1	no
pH	pH	Weekly	6.5	8.5	2	7.8	7.80	7.8	7.8	no	0	-	-	-	-	-	1	8.0	8.00	8.0	8.0	no
Phosphorus (Total)	Milligrams per Litre	Weekly	-	0.5	2	0.24	0.27	0.27	0.30	no	0	-	-	-	-	-	1	0.12	0.12	0.12	0.12	no
Total Dissolved Solids	Milligrams per Litre	Weekly	-	2000	2	880	885	885	890	no	0	-	-	-	-	-	1	930	930	930	930	no
Total Suspended Solids	Milligrams per Litre	Weekly	-	20	2	16.00	18.50	18.50	21.00	yes	0	-	-	-	-	-	0	-	-	-	-	-
Zinc	Milligrams per Litre	Monthly	-	0.4	1	-	0.01	-	-	no	0	-	-	-	-	-	1	-	0.00	-	-	no
				Monthly Samples Collected	7 October 2014												1 December 2014					
				Monthly Results Obtained	28 October 2014												5 January 2015					
				Monthly Results Published	14 November 2014												21 January 2015					
				Quarterly Samples Collected													19 December 2014					
				Quarterly Results Obtained													23 January 2015					
				Quarterly Results Published													6 February 2015					

Monitoring point 1

Discharge to waters, Effluent quality and volume monitoring

Pollutant	Units of measure	Licence requirements			January						February						March					
		Monitoring frequency required when discharging	0 percentile limit	100 percentile limit	Number of results	Minimum Value	Mean Value	Median Value	Maximum Value	Exceedance (yes/no)	Number of results	Minimum Value	Mean Value	Median Value	Maximum Value	Exceedance (yes/no)	Number of results	Minimum Value	Mean Value	Median Value	Maximum Value	Exceedance (yes/no)
Biochemical Oxygen Demand	Milligrams per Litre	Weekly	-	20	2	6	6.0	6	6	no	0	-	-	-	-	-	0	-	-	-	-	-
Chemical Oxygen Demand	Milligrams per Litre	Weekly	-	-	2	170	185	185	200	no	0	-	-	-	-	-	0	-	-	-	-	-
Colour	Hazen	Weekly	-	-	2	400	450	450	500	no	0	-	-	-	-	-	0	-	-	-	-	-
Copper	Milligrams per Litre	Quarterly	-	0.05	1	-	0.00	-	-	no	0	-	-	-	-	-	0	-	-	-	-	-
Nitrogen (Ammonia)	Milligrams per Litre	Weekly	-	3.0	2	0.9	0.95	1.0	1.0	no	0	-	-	-	-	-	0	-	-	-	-	-
Nitrogen (Total)	Milligrams per Litre	Weekly	-	15	2	3.2	3.25	3.3	3.3	no	0	-	-	-	-	-	0	-	-	-	-	-
Oil and Grease	Milligrams per Litre	Weekly	-	10	2	< 1	< 1	< 1	< 1	no	0	-	-	-	-	-	0	-	-	-	-	-
pH	pH	Weekly	6.5	8.5	2	7.8	7.90	7.9	8.0	no	0	-	-	-	-	-	0	-	-	-	-	-
Phosphorus (Total)	Milligrams per Litre	Weekly	-	0.5	2	0.15	0.19	0.19	0.23	no	0	-	-	-	-	-	0	-	-	-	-	-
Total Dissolved Solids	Milligrams per Litre	Weekly	-	2000	2	1000	1100	1100	1200	no	0	-	-	-	-	-	0	-	-	-	-	-
Total Suspended Solids	Milligrams per Litre	Weekly	-	20	2	6.00	7.50	7.50	9.00	no	0	-	-	-	-	-	0	-	-	-	-	-
Zinc	Milligrams per Litre	Monthly	-	0.4	1	-	0.02	-	-	no	0	-	-	-	-	-	0	-	-	-	-	-
		Monthly Samples Collected			5 January 2015																	
		Monthly Results Obtained			23 January 2015																	
		Monthly Results Published			6 February 2015																	
		Quarterly Samples Collected			5 January 2015																	
		Quarterly Results Obtained			23 January 2015																	
		Quarterly Results Published			6 February 2015																	

Pollutant	Units of measure	Licence requirements			April						May						June					
		Monitoring frequency required when discharging	0 percentile limit	100 percentile limit	Number of results	Minimum Value	Mean Value	Median Value	Maximum Value	Exceedance (yes/no)	Number of results	Minimum Value	Mean Value	Median Value	Maximum Value	Exceedance (yes/no)	Number of results	Minimum Value	Mean Value	Median Value	Maximum Value	Exceedance (yes/no)
Biochemical Oxygen Demand	Milligrams per Litre	Weekly	-	20	0	-	-	-	-	-	1	8	8.0	8	8	no	5	6	10.0	10	13	no
Chemical Oxygen Demand	Milligrams per Litre	Weekly	-	-	0	-	-	-	-	-	1	210	210	210	210	no	5	170	180	180	190	no
Colour	Hazen	Weekly	-	-	0	-	-	-	-	-	1	400	400	400	400	no	5	240	322	350	350	no
Copper	Milligrams per Litre	Quarterly	-	0.05	0	-	-	-	-	-	1	-	0.00	-	-	no	0	-	-	-	-	-
Nitrogen (Ammonia)	Milligrams per Litre	Weekly	-	3.0	0	-	-	-	-	-	1	0.7	0.70	0.7	0.7	no	5	0.5	1.32	1.3	2.3	no
Nitrogen (Total)	Milligrams per Litre	Weekly	-	15	0	-	-	-	-	-	1	2.2	2.20	2.2	2.2	no	5	2.4	3.84	3.7	5.6	no
Oil and Grease	Milligrams per Litre	Weekly	-	10	0	-	-	-	-	-	1	< 1	< 1	< 1	< 1	no	5	< 1	< 1	< 1	< 1	no
pH	pH	Weekly	6.5	8.5	0	-	-	-	-	-	1	8.1	8.10	8.1	8.1	no	5	7.8	7.94	8.0	8.0	no
Phosphorus (Total)	Milligrams per Litre	Weekly	-	0.5	0	-	-	-	-	-	1	0.13	0.13	0.13	0.13	no	5	0.14	0.24	0.26	0.32	no
Total Dissolved Solids	Milligrams per Litre	Weekly	-	2000	0	-	-	-	-	-	1	900	900	900	900	no	5	860	928	930	990	no
Total Suspended Solids	Milligrams per Litre	Weekly	-	20	0	-	-	-	-	-	1	3.00	3.00	3.00	3.00	no	5	< 2	0.40	< 2	2.00	no
Zinc	Milligrams per Litre	Monthly	-	0.4	0	-	-	-	-	-	1	-	0.02	-	-	no	1	-	0.03	-	-	no
		Monthly Samples Collected									18 May 2015						9 June 2015					
		Monthly Results Obtained									1 June 2015						1 July 2015					
		Monthly Results Published									16 June 2015						6 July 2015					
		Quarterly Samples Collected									18 May 2015											
		Quarterly Results Obtained									1 June 2015											
		Quarterly Results Published									16 June 2015											

Yearly Licence requirements											
Pollutant	Units of measure	Monitoring frequency required when discharging	Number of results	Minimum Value	Maximum Value	50 percentile			90 percentile		
						limit	value	Exceedance (yes/no)	limit	value	Exceedance (yes/no)
Biochemical Oxygen Demand	Milligrams per Litre	Weekly	15	5.0	29	14	10.0	no	18	22.2	yes
Nitrogen (Ammonia)	Milligrams per Litre	Weekly	15	< 0.2	2	-	-	no	2.0	1.42	no
Nitrogen (Total)	Milligrams per Litre	Weekly	15	2.1	6	4	3.1	no	7	4.3	no
Phosphorus (Total)	Milligrams per Litre	Weekly	15	0.1	0	-	-	no	0.3	0.31	yes
Total Dissolved Solids	Milligrams per Litre	Weekly	15	720.0	1200	1650	890	no	-	-	-

Yearly Licence requirements						
Volume Limit	Unit of measure	Monitoring frequency required when discharging	Number of results	Volume Limit	Maximum Value	Exceedance (yes/no)
Liquids discharged to water	kilolitres per day	Daily	110	10000	9585	no

Monitoring point 2

Discharge to waters, Cooling Water quality and volume monitoring

		Licence requirements			July						August						September						
Pollutant	Units of measure	Monitoring frequency required when discharging	0 percentile limit	100 percentile limit	Number of results	Minimum Value	Mean Value	Median Value	Maximum Value	Exceedance (yes/no)	Number of results	Minimum Value	Mean Value	Median Value	Maximum Value	Exceedance (yes/no)	Number of results	Minimum Value	Mean Value	Median Value	Maximum Value	Exceedance (yes/no)	
Biochemical Oxygen Demand	Milligrams per Litre	Monthly	-	-	1	-	< 2	-	-	-	1	-	< 2	-	-	-	1	-	< 2	-	-	-	
Conductivity	Millisiemens per cm	Weekly	-	-	4	104	108	109	111	-	4	110	111	110	115	-	5	110	114	110	120	-	
Nitrogen (Total)	Milligrams per Litre	Monthly	-	-	1	-	0	-	-	-	1	-	0	-	-	-	1	-	0	-	-	-	
Oil and Grease	Milligrams per Litre	Monthly	-	5	1	-	< 1	-	-	no	1	-	< 1	-	-	no	1	-	< 1	-	-	no	
pH	pH	Weekly	6.5	8.5	4	7.20	7.55	7.60	7.80	no	4	7.40	7.48	7.50	7.50	no	5	7.40	7.52	7.50	7.60	no	
Phosphorus (Total)	Milligrams per Litre	Monthly	-	-	1	-	< 0.01	-	-	-	1	-	0	-	-	-	1	-	< 0.01	-	-	-	
Total Dissolved Solids	Milligrams per Litre	Monthly	-	200	1	-	33	-	-	no	1	-	65	-	-	no	1	-	42	-	-	no	
Total Suspended Solids	Milligrams per Litre	Monthly	-	-	1	-	< 2	-	-	-	1	-	< 2	-	-	-	1	-	< 2	-	-	-	
Zinc	Milligrams per Litre	Monthly	-	-	1	-	< 2	-	-	-	1	-	< 2	-	-	-	1	-	< 2	-	-	-	
		Monthly Samples Collected				7 July 2014						4 August 2014						1 September 2014					
		Monthly Results Obtained				16 September 2014						16 September 2014						16 September 2014					
		Monthly Results Published				2 October 2014						2 October 2014						2 October 2014					

		Licence requirements			October						November						December						
Pollutant	Units of measure	Monitoring frequency required when discharging	0 percentile limit	100 percentile limit	Number of results	Minimum Value	Mean Value	Median Value	Maximum Value	Exceedance (yes/no)	Number of results	Minimum Value	Mean Value	Median Value	Maximum Value	Exceedance (yes/no)	Number of results	Minimum Value	Mean Value	Median Value	Maximum Value	Exceedance (yes/no)	
Biochemical Oxygen Demand	Milligrams per Litre	Monthly	-	-	1	-	< 2	-	-	-	1	-	< 2	-	-	-	1	-	< 2	-	-	-	
Conductivity	Millisiemens per cm	Weekly	-	-	4	96	109	110	120	-	4	110	123	120	140	-	5	85	95	92	110	-	
Nitrogen (Total)	Milligrams per Litre	Monthly	-	-	1	-	0	-	-	-	1	-	0	-	-	-	1	-	0	-	-	-	
Oil and Grease	Milligrams per Litre	Monthly	-	5	1	-	< 1	-	-	no	1	-	7	-	-	yes	1	-	< 1	-	-	no	
pH	pH	Weekly	6.5	8.5	4	7.10	7.45	7.55	7.60	no	4	7.30	7.48	7.50	7.60	no	5	7.50	7.90	7.60	9.10	no	
Phosphorus (Total)	Milligrams per Litre	Monthly	-	-	1	-	< 0.01	-	-	-	1	-	0	-	-	-	1	-	< 0.01	-	-	-	
Total Dissolved Solids	Milligrams per Litre	Monthly	-	200	1	-	66	-	-	no	1	-	90	-	-	no	1	-	76	-	-	no	
Total Suspended Solids	Milligrams per Litre	Monthly	-	-	1	-	< 2	-	-	-	1	-	< 2	-	-	-	1	-	< 2	-	-	-	
Zinc	Milligrams per Litre	Monthly	-	-	1	-	< 2	-	-	-	1	-	< 2	-	-	-	1	-	< 2	-	-	-	
		Monthly Samples Collected				13 October 2014						10 November 2014						1 December 2014					
		Monthly Results Obtained				19 November 2014						25 November 2014						5 January 2015					
		Monthly Results Published				20 November 2014						12 December 2014						21 January 2015					

Monitoring point 2

Discharge to waters, Cooling Water quality and volume monitoring

		Licence requirements			January						February						March						
Pollutant	Units of measure	Monitoring frequency required when discharging	0 percentile limit	100 percentile limit	Number of results	Minimum Value	Mean Value	Median Value	Maximum Value	Exceedance (yes/no)	Number of results	Minimum Value	Mean Value	Median Value	Maximum Value	Exceedance (yes/no)	Number of results	Minimum Value	Mean Value	Median Value	Maximum Value	Exceedance (yes/no)	
Biochemical Oxygen Demand	Milligrams per Litre	Monthly	-	-	1	-	< 2	-	-	-	1	-	< 2	-	-	-	1	-	< 2	-	-	-	
Conductivity	Millisiemens per cm	Weekly	-	-	3	97	106	100	120	-	4	120	123	120	130	-	5	120	122	120	130	-	
Nitrogen (Total)	Milligrams per Litre	Monthly	-	-	1	-	< 2	-	-	-	1	-	0	-	-	-	1	-	0	-	-	-	
Oil and Grease	Milligrams per Litre	Monthly	-	5	1	-	< 1	-	-	no	1	-	< 1	-	-	no	1	-	< 1	-	-	no	
pH	pH	Weekly	6.5	8.5	3	7.60	7.60	7.60	7.60	no	4	7.60	7.60	7.60	7.60	no	5	7.60	7.74	7.70	7.90	no	
Phosphorus (Total)	Milligrams per Litre	Monthly	-	-	1	-	< 0.01	-	-	-	1	-	< 0.01	-	-	-	1	-	0	-	-	-	
Total Dissolved Solids	Milligrams per Litre	Monthly	-	200	1	-	56	-	-	no	1	-	90	-	-	no	1	-	75	-	-	no	
Total Suspended Solids	Milligrams per Litre	Monthly	-	-	1	-	< 2	-	-	-	1	-	< 2	-	-	-	1	-	< 2	-	-	-	
Zinc	Milligrams per Litre	Monthly	-	-	1	-	< 2	-	-	-	1	-	< 2	-	-	-	1	-	< 2	-	-	-	
		Monthly Samples Collected				5 January 2015						2 February 2015						2 March 2015					
		Monthly Results Obtained				23 January 2015						4 March 2015						28 May 2015					
		Monthly Results Published				6 February 2015						5 March 2015						16 June 2015					

		Licence requirements			April						May						June						
Pollutant	Units of measure	Monitoring frequency required when discharging	0 percentile limit	100 percentile limit	Number of results	Minimum Value	Mean Value	Median Value	Maximum Value	Exceedance (yes/no)	Number of results	Minimum Value	Mean Value	Median Value	Maximum Value	Exceedance (yes/no)	Number of results	Minimum Value	Mean Value	Median Value	Maximum Value	Exceedance (yes/no)	
Biochemical Oxygen Demand	Milligrams per Litre	Monthly	-	-	1	-	< 2	-	-	-	1	-	< 2	-	-	-	1	-	< 2	-	-	-	
Conductivity	Millisiemens per cm	Weekly	-	-	4	110	115	110	130	-	4	110	120	120	130	-	5	97	113	120	120	-	
Nitrogen (Total)	Milligrams per Litre	Monthly	-	-	1	-	< 2	-	-	-	1	-	< 2	-	-	-	1	-	< 2	-	-	-	
Oil and Grease	Milligrams per Litre	Monthly	-	5	1	-	< 1	-	-	no	1	-	< 1	-	-	no	1	-	< 1	-	-	no	
pH	pH	Weekly	6.5	8.5	4	7.50	7.68	7.70	7.80	no	4	7.40	7.48	7.50	7.50	no	5	7.20	7.46	7.50	7.60	no	
Phosphorus (Total)	Milligrams per Litre	Monthly	-	-	1	-	< 0.01	-	-	-	1	-	< 0.01	-	-	-	1	-	< 0.01	-	-	-	
Total Dissolved Solids	Milligrams per Litre	Monthly	-	200	1	-	80	-	-	no	1	-	92	-	-	no	1	-	80	-	-	no	
Total Suspended Solids	Milligrams per Litre	Monthly	-	-	1	-	< 2	-	-	-	1	-	< 2	-	-	-	1	-	< 2	-	-	-	
Zinc	Milligrams per Litre	Monthly	-	-	1	-	< 2	-	-	-	1	-	< 2	-	-	-	1	-	< 2	-	-	-	
		Monthly Samples Collected				7 April 2015						11 May 2015						1 June 2015					
		Monthly Results Obtained				6 May 2015						1 June 2015						18 June 2015					
		Monthly Results Published				25 May 2015						16 June 2015						6 July 2015					

Yearly Licence requirements						
Volume Limit	Unit of measure	Monitoring frequency required when discharging	Number of results	Volume Limit	Maximum Value	Exceedance (yes/no)
Liquids discharged to water	kilolitres per day	Daily	365	10000	8598	no

Monitoring point 10
Soil Monitoring

See separate PDF report titled 'Soil Properties Report'

Monitoring point 11
Discharge to Air, Air Emissions Monitoring

Pollutant	Units of measure	Monitoring frequency required	Number of results	July	August	September	October	November	December	January	February	March	April	May	June
Coarse Particulates	Milligrams per cubic meter	2 times a year	2						10				36		
Fine Particulates	Milligrams per cubic meter	2 times a year	2						85				105		
Nitrogen Oxides	Milligrams per cubic meter	2 times a year	2						247				241		
Bi-annual Samples Collected									1 Dec 14				21 Apr 15		
Bi-annual Results Obtained									12 Jan 15				17 Jun 15		
Bi-annual Results Published									21 Jan 15				6 Jul 15		

Monitoring point 13
Effluent quality monitoring - 4 Day Pond Outlet

Pollutant	Units of measure	Monitoring frequency required when discharging	July	August	September	October	November	December	January	February	March	April	May	June
Biochemical Oxygen Demand	Milligrams per Litre	Monthly	55	32	9	30	22	14	7	6	43	39	10	14
Nitrogen (Total)	Milligrams per Litre	Monthly	4.2	3.7	5.9	4.6	4.1	2.9	3.0	5.0	4.2	2.3	3.0	4.5
pH	pH	Monthly	7.9	8.0	7.4	7.8	7.7	7.7	7.8	8.1	7.8	7.8	7.9	8.1
Phosphorus (Total)	Milligrams per Litre	Monthly	0.47	0.26	0.59	0.32	0.48	0.28	0.15	0.44	0.28	0.32	0.27	0.23
Total Dissolved Solids	Milligrams per Litre	Monthly	960	870	860	910	860	1000	1200	900	1000	1200	980	1000
Total Suspended Solids	Milligrams per Litre	Monthly	62	20	12	33	21	9	11	14	26	12	0	6
Zinc	Milligrams per Litre	Monthly	0.01	0.01	0.01	0.02	0.01	0.00	0.02	0.00	0.04	0.01	0.02	0.03
Monthly Samples Collected			7 Jul 14	4 Aug 14	1 Sep 14	13 Oct 14	10 Nov 14	1 Dec 14	5 Jan 15	2 Feb 15	2 Mar 15	7 Apr 15	11 May 15	1 Jun 15
Monthly Results Obtained			16 Sep 14	16 Sep 14	16 Sep 14	19 Nov 14	25 Nov 14	5 Jan 15	23 Jan 15	4 Mar 15	28 May 15	6 May 15	1 Jun 15	18 Jun 15
Monthly Results Published			2 Oct 14	2 Oct 14	2 Oct 14	20 Nov 14	12 Dec 14	21 Jan 15	6 Feb 15	5 Mar 15	16 Jun 15	25 May 15	16 Jun 15	6 Jul 15

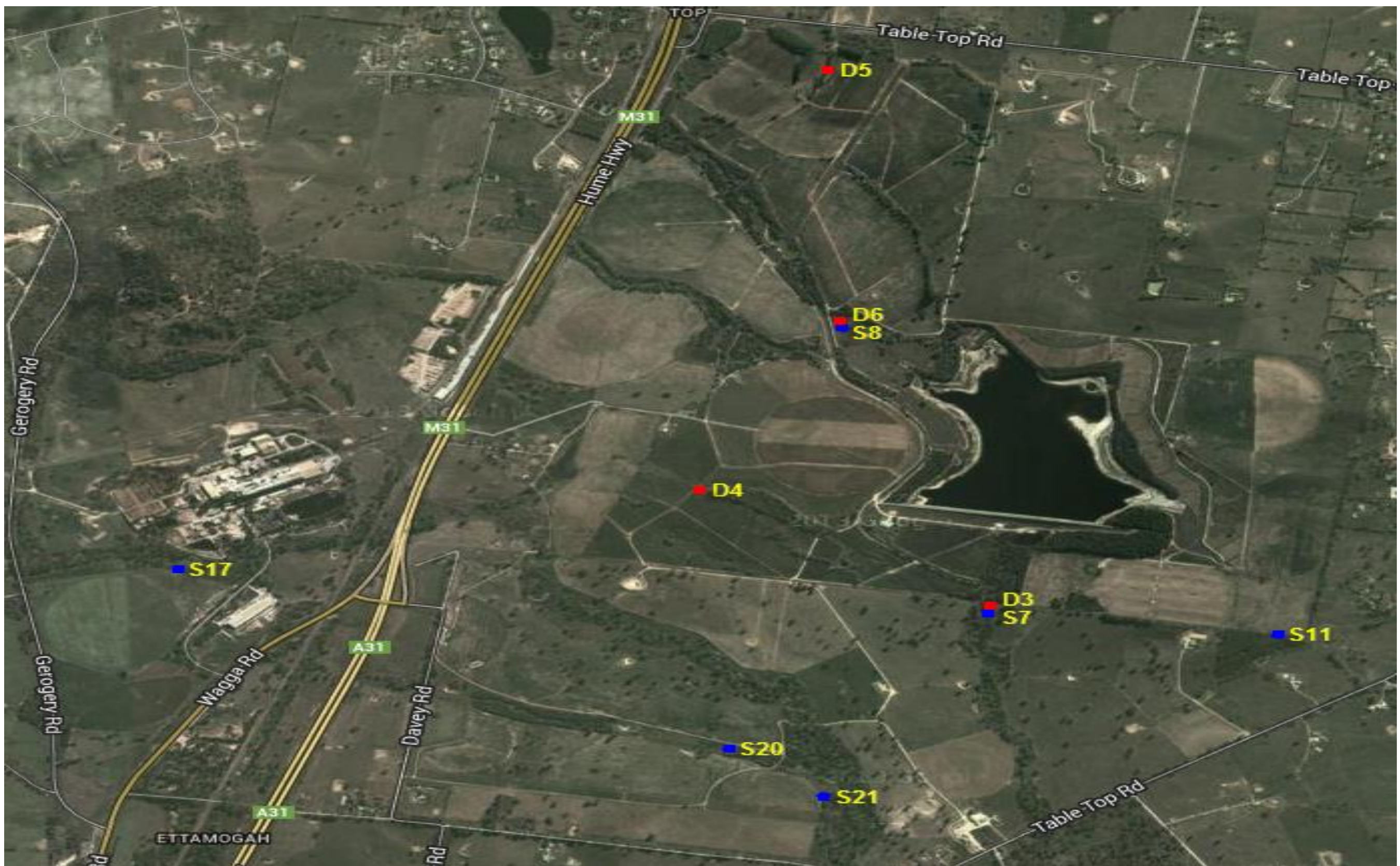
Monitoring points 14 to 23

Groundwater quality monitoring

	Month	August			November			February			May			
		Pollutant	Standing Water Level	pH	Conductivity	Standing Water Level	pH	Conductivity	Standing Water Level	pH	Conductivity	Standing Water Level	pH	Conductivity
			Units of measure	Meters		microsiemens per centimeter	Meters		microsiemens per centimeter	Meters		microsiemens per centimeter	Meters	
Deep Bores	3	47.2	7.4	990	44.7	7.2	960	44.7	7.1	970	44.7	6.8	960	
	4	44.7	7.0	3000	44.7	7.4	3000	44.7	7.3	3000	44.7	7.1	3000	
	5	44.7	7.0	5700	44.7	7.0	6000	45.0	7.0	6100	44.7	7.1	5800	
	6	45.1	8.0	710	45.0	8.0	700	44.8	7.9	720	43.8	8.1	700	
Shallow Bores	7	8.7	7.6	3800	8.9	7.6	4000	9.1	7.3	4400	9.4	7.2	4300	
	8	1.8	7.0	1500	2.2	7.0	1400	2.1	6.9	1200	1.8	6.8	1600	
	11	8.5	7.0	6600	8.4	7.1	7000	8.5	7.1	7300	8.4	7.0	6700	
	17	5.0	6.5	470	5.7	6.6	490	Dry			Dry			
	20	Dry			Dry			Dry			Dry			
	21	6.4	7.3	2300	6.5	7.5	2300	6.6	7.2	2300	6.8	7.1	2300	
3 Monthly Samples Collected		20 Aug 14			19 Nov 14			04 Mar 15			19 May 15			
3 Monthly Results Obtained		16 Sep 14			17 Feb 15			28 May 15			02 Jun 15			
3 Monthly Results Published		02 Oct 14			05 Mar 15			16 Jun 15			16 Jun 15			

Pollutant	Units of measure	Deep Bores				Shallow Bores					
		3	4	5	6	7	8	11	17	20	21
Nitrate	Milligrams per Litre	0.01	0.83	6.20	0.01	31.00	1.70	0.31	15.00		6.10
Total Nitrogen	Milligrams per Litre	0.4	1.2	6.6	6.6	31.0	2.2	0.5	15.0		7.0
Total Phosphorus	Milligrams per Litre	0.13	0.62	0.05	0.07	0.08	0.09	0.08	3.30		0.23
Annual Samples Collected		20 Aug 14	20 Aug 14	20 Aug 14	20 Aug 14	20 Aug 14	20 Aug 14	20 Aug 14	20 Aug 14	Bore Dry	20 Aug 14
Annual Results Obtained		16 Sep 14	16 Sep 14	16 Sep 14	16 Sep 14	16 Sep 14	16 Sep 14	16 Sep 14	16 Sep 14		16 Sep 14
Annual Results Published		02 Oct 14	02 Oct 14	02 Oct 14	02 Oct 14	02 Oct 14	02 Oct 14	02 Oct 14	02 Oct 14		02 Oct 14

Ettamogah Site map showing Groundwater Bores



Note: Shallow Bores are denoted with blue markers and Deep Bores are denoted by red markers. The water quality of 8 and 9 mile creeks are also monitored, but are not required to be reported by EPL 1272

Non compliance log

Pollutant	Sample dates	Detail
BOD and TSS at Monitoring Point 1	7/10 and 13/10	Increased particulate load from plant caused exceedence of BOD 100 percentile of 20 mg/L on 7/10 (29 mg/L) and 13/10 (25 mg/L). TSS 100 percentile of 20 mg/L exceeded on 13/10 (21 mg/L)
Oil and Grease at Monitoring Point 2	10 November	Exceeded 100 percentile limit (7 mg/L). Internal online monitoring (2 separate units) did not measure an exceedence.
Weekly Samples at Monitoring Point 1	22 December	Missed taking samples due to human error.
Weekly Sample at Monitoring Point 1	29 December	Sample incorrectly stored, resulting in a Total Suspended Solids result which was not accurate. Result discarded.
Weekly Sample at Monitoring Point 2	29 December	Sample incorrectly stored, resulting in a pH result which was not accurate. Result discarded.
Monthly Sample at Monitoring Point 2	05 January	Sample lost by courier or contracting laboratory. Replacement taken on 29 June 2015
Weekly Samples at Monitoring Point 2	26 January	Sample lost by courier or contracting laboratory.
Annual results from Monitoring Point 1	1/7/14 to 30/6/15	Exceeded 90 percentile limits for Total Phosphorus (0.31 mg/L) and BOD (22 .2 mg/L)

Correction log

Sample date and time	Original data	Corrected data	Date corrected	Date originally published	Reason

Community Complaints

Complaint	Date	Detail
Odour	16/07/2014	Odour from primary clarification unit. Peroxide dosing increased to rectify
Odour	12 - 13/07/2015	Unidentified Odour. Peroxide dosing increased and primary sludge blanket reduced.