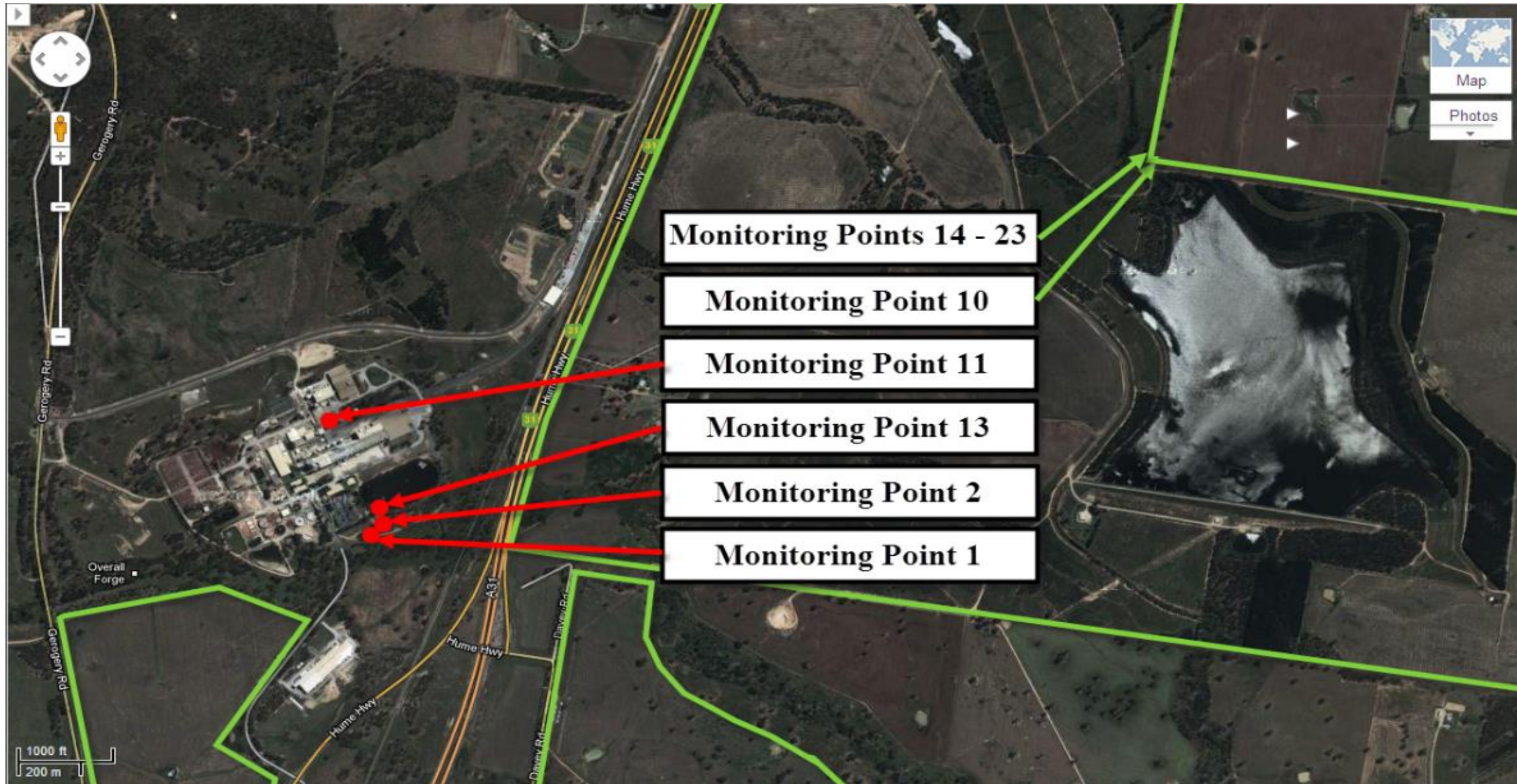


A full copy of our license can be found on the EPA website under the following address
<http://www.epa.nsw.gov.au/prpoeoapp/ViewPOEOLicence.aspx?DOCID=32757&SYSUID=1&LICID=1272>

Result data last updated 1 July 2016

Map of Norske Skog Albury Paper Mills Environmental Protection Licence compliance monitoring sites



Courtesy of Google Maps

Monitoring point 1

Discharge to waters, Effluent quality and volume monitoring

		Licence requirements			July						August						September						
Pollutant	Units of measure	Monitoring frequency when discharging	0 percentile limit	100 percentile limit	Number of results	Minimum Value	Mean Value	Median Value	Maximum Value	Exceedance (yes/no)	Number of results	Minimum Value	Mean Value	Median Value	Maximum Value	Exceedance (yes/no)	Number of results	Minimum Value	Mean Value	Median Value	Maximum Value	Exceedance (yes/no)	
Biochemical Oxygen Demand	Milligrams per Litre	Weekly	-	20	4	< 2	4.8	6	8	no	2	3	3.0	3	3	no	2	3	4.0	4	5	no	
Chemical Oxygen Demand	Milligrams per Litre	Weekly	-	-	4	120	145	145	170	no	2	110	110	110	110	no	2	99	115	115	130	no	
Colour	Hazen	Weekly	-	-	4	240	280	290	300	no	2	180	190	190	200	no	2	140	190	190	240	no	
Copper	Milligrams per Litre	Quarterly	-	0.05	1	-	0.00	-	-	no	1	-	0.04	-	-	no	0	-	-	-	-	-	
Nitrogen (Ammonia)	Milligrams per Litre	Weekly	-	3.0	4	< 0.2	0.18	0.1	0.5	no	2	< 0.2	< 0.2	< 0.2	< 0.2	no	2	< 0.2	< 0.2	< 0.2	< 0.2	no	
Nitrogen (Total)	Milligrams per Litre	Weekly	-	15	4	2.3	2.70	2.7	3.1	no	2	1.7	1.85	1.9	2.0	no	2	1.7	1.75	1.8	1.8	no	
Oil and Grease	Milligrams per Litre	Weekly	-	10	4	< 1	2.00	< 1	8.00	no	2	< 1	< 1	< 1	< 1	no	2	< 1	< 1	< 1	< 1	no	
pH	pH	Weekly	6.5	8.5	4	7.9	8.00	8.0	8.1	no	2	8.2	8.25	8.3	8.3	no	2	8.0	8.10	8.1	8.2	no	
Phosphorus (Total)	Milligrams per Litre	Weekly	-	0.5	4	0.10	0.16	0.16	0.22	no	2	0.14	0.16	0.16	0.18	no	2	< 0.01	0.06	0.06	0.12	no	
Total Dissolved Solids	Milligrams per Litre	Weekly	-	2000	4	760	785	785	810	no	2	800	805	805	810	no	2	720	740	740	760	no	
Total Suspended Solids	Milligrams per Litre	Weekly	-	20	4	< 2	5.00	4.00	12.00	no	2	2.00	2.50	2.50	3.00	no	2	6.00	6.00	6.00	6.00	no	
Zinc	Milligrams per Litre	Monthly	-	0.4	1	-	0.01	-	-	no	1	-	0.01	-	-	no	1	-	0.30	-	-	no	
		Monthly Samples Collected				6 July 2015						3 August 2015						21 September 2015					
		Monthly Results Obtained				30 July 2015						28 August 2015						1 October 2015					
		Monthly Results Published				18 August 2015						16 September 2015						16 October 2015					
		Quarterly Samples Collected				6 July 2015						3 August 2015											
		Quarterly Results Obtained				30 July 2015						28 August 2015											
		Quarterly Results Published				18 August 2015						16 September 2015											

		Licence requirements			October						November						December						
Pollutant	Units of measure	Monitoring frequency when discharging	0 percentile limit	100 percentile limit	Number of results	Minimum Value	Mean Value	Median Value	Maximum Value	Exceedance (yes/no)	Number of results	Minimum Value	Mean Value	Median Value	Maximum Value	Exceedance (yes/no)	Number of results	Minimum Value	Mean Value	Median Value	Maximum Value	Exceedance (yes/no)	
Biochemical Oxygen Demand	Milligrams per Litre	Weekly	-	20	1	< 2	< 2	< 2	< 2	no	1	3	3.0	3	3	no	0	-	-	-	-	-	
Chemical Oxygen Demand	Milligrams per Litre	Weekly	-	-	1	130	130	130	130	no	1	130	130	130	130	no	0	-	-	-	-	-	
Colour	Hazen	Weekly	-	-	1	320	320	320	320	no	1	240	240	240	240	no	0	-	-	-	-	-	
Copper	Milligrams per Litre	Quarterly	-	0.05	0	-	-	-	-	no	1	-	0.00	-	-	no	0	-	-	-	-	-	
Nitrogen (Ammonia)	Milligrams per Litre	Weekly	-	3.0	1	0.2	0.20	0.2	0.2	no	1	< 0.2	< 0.2	< 0.2	< 0.2	no	0	-	-	-	-	-	
Nitrogen (Total)	Milligrams per Litre	Weekly	-	15	1	2.9	2.90	2.9	2.9	no	1	3.2	3.20	3.2	3.2	no	0	-	-	-	-	-	
Oil and Grease	Milligrams per Litre	Weekly	-	10	1	< 1	< 1	< 1	< 1	no	1	< 1	< 1	< 1	< 1	no	0	-	-	-	-	-	
pH	pH	Weekly	6.5	8.5	1	8.1	8.10	8.1	8.1	no	1	8.1	8.10	8.1	8.1	no	0	-	-	-	-	-	
Phosphorus (Total)	Milligrams per Litre	Weekly	-	0.5	1	0.42	0.42	0.42	0.42	no	1	0.31	0.31	0.31	0.31	no	0	-	-	-	-	-	
Total Dissolved Solids	Milligrams per Litre	Weekly	-	2000	1	880	880	880	880	no	1	940	940	940	940	no	0	-	-	-	-	-	
Total Suspended Solids	Milligrams per Litre	Weekly	-	20	1	< 2	< 2	< 2	< 2	no	1	< 2	< 2	< 2	< 2	no	0	-	-	-	-	-	
Zinc	Milligrams per Litre	Monthly	-	0.4	1	-	0.03	-	-	no	1	-	0.01	-	-	no	0	-	-	-	-	-	
		Monthly Samples Collected				26 October 2015						2 November 2015											
		Monthly Results Obtained				9 November 2015						10 November 2015											
		Monthly Results Published				20 November 2015						20 November 2015											
		Quarterly Samples Collected										2 November 2015											
		Quarterly Results Obtained										10 November 2015											
		Quarterly Results Published										20 November 2015											

Monitoring point 1

Discharge to waters, Effluent quality and volume monitoring

Pollutant	Units of measure	Licence requirements			January						February						March					
		Monitoring frequency required when discharging	0 percentile limit	100 percentile limit	Number of results	Minimum Value	Mean Value	Median Value	Maximum Value	Exceedance (yes/no)	Number of results	Minimum Value	Mean Value	Median Value	Maximum Value	Exceedance (yes/no)	Number of results	Minimum Value	Mean Value	Median Value	Maximum Value	Exceedance (yes/no)
Biochemical Oxygen Demand	Milligrams per Litre	Weekly	-	20	0	-	-	-	-	-	2	5	5.5	6	6	no	4	4	7.5	7	13	no
Chemical Oxygen Demand	Milligrams per Litre	Weekly	-	-	0	-	-	-	-	-	2	190	195	195	200	no	4	150	180	185	200	no
Colour	Hazen	Weekly	-	-	0	-	-	-	-	-	2	400	400	400	400	no	4	14	234	300	320	no
Copper	Milligrams per Litre	Quarterly	-	0.05	0	-	-	-	-	-	1	-	0.00	-	-	no	0	-	-	-	-	-
Nitrogen (Ammonia)	Milligrams per Litre	Weekly	-	3.0	0	-	-	-	-	-	2	0.3	0.40	0.4	0.5	no	4	< 0.2	< 0.2	< 0.2	< 0.2	no
Nitrogen (Total)	Milligrams per Litre	Weekly	-	15	0	-	-	-	-	-	2	2.4	2.90	2.9	3.4	no	4	1.7	2.48	2.2	3.9	no
Oil and Grease	Milligrams per Litre	Weekly	-	10	0	-	-	-	-	-	2	< 1	< 1	< 1	< 1	no	4	< 1	4.75	4.50	10.00	no
pH	pH	Weekly	6.5	8.5	0	-	-	-	-	-	2	8.0	8.05	8.1	8.1	no	4	8.2	8.30	8.3	8.4	no
Phosphorus (Total)	Milligrams per Litre	Weekly	-	0.5	0	-	-	-	-	-	2	0.20	0.21	0.21	0.22	no	4	0.08	0.11	0.10	0.14	no
Total Dissolved Solids	Milligrams per Litre	Weekly	-	2000	0	-	-	-	-	-	2	1100	1100	1100	1100	no	4	900	1025	1000	1200	no
Total Suspended Solids	Milligrams per Litre	Weekly	-	20	0	-	-	-	-	-	2	2.00	5.50	5.50	9.00	no	4	4.00	7.00	5.00	14.00	no
Zinc	Milligrams per Litre	Monthly	-	0.4	0	-	-	-	-	-	1	-	0.00	-	-	no	1	-	0.04	-	-	no
		Monthly Samples Collected									15 February 2016						7 March 2016					
		Monthly Results Obtained															9 March 2016					
		Monthly Results Published															31 March 2016					
		Quarterly Samples Collected									15 February 2016											
		Quarterly Results Obtained															9 March 2016					
		Quarterly Results Published															31 March 2016					

Pollutant	Units of measure	Licence requirements			April						May						June					
		Monitoring frequency required when discharging	0 percentile limit	100 percentile limit	Number of results	Minimum Value	Mean Value	Median Value	Maximum Value	Exceedance (yes/no)	Number of results	Minimum Value	Mean Value	Median Value	Maximum Value	Exceedance (yes/no)	Number of results	Minimum Value	Mean Value	Median Value	Maximum Value	Exceedance (yes/no)
Biochemical Oxygen Demand	Milligrams per Litre	Weekly	-	20	1	7	7.0	7	7	no	0	-	-	-	-	-	0	-	-	-	-	-
Chemical Oxygen Demand	Milligrams per Litre	Weekly	-	-	1	200	200	200	200	no	0	-	-	-	-	-	-	0	-	-	-	-
Colour	Hazen	Weekly	-	-	1	260	260	260	260	no	0	-	-	-	-	-	-	0	-	-	-	-
Copper	Milligrams per Litre	Quarterly	-	0.05	1	-	0.00	-	-	no	0	-	-	-	-	-	-	0	-	-	-	-
Nitrogen (Ammonia)	Milligrams per Litre	Weekly	-	3.0	1	< 0.2	< 0.2	< 0.2	< 0.2	no	0	-	-	-	-	-	-	0	-	-	-	-
Nitrogen (Total)	Milligrams per Litre	Weekly	-	15	1	2.0	2.00	2.0	2.0	no	0	-	-	-	-	-	-	0	-	-	-	-
Oil and Grease	Milligrams per Litre	Weekly	-	10	1	8.00	8.00	8.00	8.00	no	0	-	-	-	-	-	-	0	-	-	-	-
pH	pH	Weekly	6.5	8.5	1	8.2	8.20	8.2	8.2	no	0	-	-	-	-	-	-	0	-	-	-	-
Phosphorus (Total)	Milligrams per Litre	Weekly	-	0.5	1	0.09	0.09	0.09	0.09	no	0	-	-	-	-	-	-	0	-	-	-	-
Total Dissolved Solids	Milligrams per Litre	Weekly	-	2000	1	1100	1100	1100	1100	no	0	-	-	-	-	-	-	0	-	-	-	-
Total Suspended Solids	Milligrams per Litre	Weekly	-	20	1	8.00	8.00	8.00	8.00	no	0	-	-	-	-	-	-	0	-	-	-	-
Zinc	Milligrams per Litre	Monthly	-	0.4	1	-	0.00	-	-	no	0	-	-	-	-	-	-	0	-	-	-	-
		Monthly Samples Collected			4 April 2016																	
		Monthly Results Obtained									10 May 2016											
		Monthly Results Published									10 May 2016											
		Quarterly Samples Collected			4 April 2016																	
		Quarterly Results Obtained									10 May 2016											
		Quarterly Results Published									10 May 2016											

Yearly Licence requirements											
Pollutant	Units of measure	Monitoring frequency required when discharging	Number of results	Minimum Value	Maximum Value	50 percentile			90 percentile		
						limit	value	Exceedance (yes/no)	limit	value	Exceedance (yes/no)
Biochemical Oxygen Demand	Milligrams per Litre	Weekly	17	< 2	13	14	5.0	no	18	8.0	no
Nitrogen (Ammonia)	Milligrams per Litre	Weekly	17	< 0.2	1	-	-	no	2.0	0.38	no
Nitrogen (Total)	Milligrams per Litre	Weekly	17	1.7	4	4	2.4	no	7	3.3	no
Phosphorus (Total)	Milligrams per Litre	Weekly	17	< 0.01	0	-	-	no	0.3	0.26	no
Total Dissolved Solids	Milligrams per Litre	Weekly	17	720.0	1200	1650	880	no	-	-	-

Yearly Licence requirements						
Volume Limit	Unit of measure	Monitoring frequency required when discharging	Number of results	Volume Limit	Maximum Value	Exceedance (yes/no)
Liquids discharged to water	kilolitres per day	Daily	123	10000	9137	no

Monitoring point 2

Discharge to waters, Cooling Water quality and volume monitoring

		Licence requirements			July						August						September						
Pollutant	Units of measure	Monitoring frequency required when discharging	0 percentile limit	100 percentile limit	Number of results	Minimum Value	Mean Value	Median Value	Maximum Value	Exceedance (yes/no)	Number of results	Minimum Value	Mean Value	Median Value	Maximum Value	Exceedance (yes/no)	Number of results	Minimum Value	Mean Value	Median Value	Maximum Value	Exceedance (yes/no)	
Biochemical Oxygen Demand	Milligrams per Litre	Monthly	-	-	1	-	< 2	-	-	-	1	-	< 2	-	-	-	1	-	< 2	-	-	-	
Conductivity	Millisiemens per cm	Weekly	-	-	4	110	118	120	120	-	5	99	108	110	120	-	4	56	78	77	100	-	
Nitrogen (Total)	Milligrams per Litre	Monthly	-	-	1	-	< 2	-	-	-	1	-	< 2	-	-	-	1	-	< 2	-	-	-	
Oil and Grease	Milligrams per Litre	Monthly	-	5	1	-	< 5	-	-	no	1	-	< 5	-	-	no	1	-	< 5	-	-	no	
pH	pH	Weekly	6.5	8.5	4	7.10	7.40	7.50	7.50	no	5	7.00	7.14	7.10	7.40	no	4	6.90	7.13	7.15	7.30	no	
Phosphorus (Total)	Milligrams per Litre	Monthly	-	-	1	-	< 0.01	-	-	-	1	-	< 0.01	-	-	-	1	-	< 0.01	-	-	-	
Total Dissolved Solids	Milligrams per Litre	Monthly	-	200	1	-	64	-	-	no	1	-	80	-	-	no	1	-	56	-	-	no	
Total Suspended Solids	Milligrams per Litre	Monthly	-	-	1	-	< 2	-	-	-	1	-	< 2	-	-	-	1	-	< 2	-	-	-	
Zinc	Milligrams per Litre	Monthly	-	-	1	-	< 2	-	-	-	1	-	< 2	-	-	-	1	-	< 2	-	-	-	
		Monthly Samples Collected				6 July 2015						3 August 2015						7 September 2015					
		Monthly Results Obtained				30 July 2015						28 August 2015						1 October 2015					
		Monthly Results Published				18 August 2015						16 September 2015						16 October 2015					

		Licence requirements			October						November						December						
Pollutant	Units of measure	Monitoring frequency required when discharging	0 percentile limit	100 percentile limit	Number of results	Minimum Value	Mean Value	Median Value	Maximum Value	Exceedance (yes/no)	Number of results	Minimum Value	Mean Value	Median Value	Maximum Value	Exceedance (yes/no)	Number of results	Minimum Value	Mean Value	Median Value	Maximum Value	Exceedance (yes/no)	
Biochemical Oxygen Demand	Milligrams per Litre	Monthly	-	-	1	-	< 2	-	-	-	1	-	< 2	-	-	-	1	-	< 2	-	-	-	
Conductivity	Millisiemens per cm	Weekly	-	-	4	110	110	110	110	-	5	58	70	64	100	-	4	58	63	60	74	-	
Nitrogen (Total)	Milligrams per Litre	Monthly	-	-	1	-	< 2	-	-	-	1	-	0	-	-	-	1	-	0	-	-	-	
Oil and Grease	Milligrams per Litre	Monthly	-	5	1	-	< 5	-	-	no	1	-	< 5	-	-	no	1	-	< 5	-	-	no	
pH	pH	Weekly	6.5	8.5	4	7.40	7.50	7.50	7.60	no	5	7.50	7.58	7.60	7.60	no	4	6.90	7.25	7.25	7.60	no	
Phosphorus (Total)	Milligrams per Litre	Monthly	-	-	1	-	< 0.01	-	-	-	1	-	< 0.01	-	-	-	1	-	< 0.01	-	-	-	
Total Dissolved Solids	Milligrams per Litre	Monthly	-	200	1	-	40	-	-	no	1	-	25	-	-	no	1	-	41	-	-	no	
Total Suspended Solids	Milligrams per Litre	Monthly	-	-	1	-	< 2	-	-	-	1	-	< 2	-	-	-	1	-	< 2	-	-	-	
Zinc	Milligrams per Litre	Monthly	-	-	1	-	< 2	-	-	-	1	-	< 2	-	-	-	1	-	< 2	-	-	-	
		Monthly Samples Collected				6 October 2015						2 November 2015						7 December 2015					
		Monthly Results Obtained				30 October 2015						10 November 2015						15 December 2015					
		Monthly Results Published				20 November 2015						20 November 2015						6 January 2016					

Monitoring point 2

Discharge to waters, Cooling Water quality and volume monitoring

		Licence requirements			January						February						March					
Pollutant	Units of measure	Monitoring frequency required when discharging	0 percentile limit	100 percentile limit	Number of results	Minimum Value	Mean Value	Median Value	Maximum Value	Exceedance (yes/no)	Number of results	Minimum Value	Mean Value	Median Value	Maximum Value	Exceedance (yes/no)	Number of results	Minimum Value	Mean Value	Median Value	Maximum Value	Exceedance (yes/no)
Biochemical Oxygen Demand	Milligrams per Litre	Monthly	-	-	1	-	< 2	-	-	-	1	-	< 2	-	-	-	1	-	< 2	-	-	-
Conductivity	Millisiemens per cm	Weekly	-	-	4	56	59	59	60	-	4	68	87	90	100	-	5	78	94	100	110	-
Nitrogen (Total)	Milligrams per Litre	Monthly	-	-	1	-	< 2	-	-	-	1	-	0	-	-	-	1	-	0	-	-	-
Oil and Grease	Milligrams per Litre	Monthly	-	5	1	-	< 5	-	-	no	1	-	< 5	-	-	no	1	-	< 5	-	-	no
pH	pH	Weekly	6.5	8.5	4	7.50	7.58	7.60	7.60	no	4	7.50	7.53	7.50	7.60	no	5	7.20	7.44	7.50	7.50	no
Phosphorus (Total)	Milligrams per Litre	Monthly	-	-	1	-	< 0.01	-	-	-	1	-	< 0.01	-	-	-	1	-	< 0.01	-	-	-
Total Dissolved Solids	Milligrams per Litre	Monthly	-	200	1	-	36	-	-	no	1	-	82	-	-	no	1	-	50	-	-	no
Total Suspended Solids	Milligrams per Litre	Monthly	-	-	1	-	< 2	-	-	-	1	-	< 2	-	-	-	1	-	< 2	-	-	-
Zinc	Milligrams per Litre	Monthly	-	-	1	-	< 2	-	-	-	1	-	< 2	-	-	-	1	-	< 2	-	-	-
Monthly Samples Collected					11 January 2016						1 February 2016						7 March 2016					
Monthly Results Obtained					20 January 2016						9 February 2016						16 March 2016					
Monthly Results Published					9 February 2016						1 March 2016						31 March 2016					

		Licence requirements			April						May						June					
Pollutant	Units of measure	Monitoring frequency required when discharging	0 percentile limit	100 percentile limit	Number of results	Minimum Value	Mean Value	Median Value	Maximum Value	Exceedance (yes/no)	Number of results	Minimum Value	Mean Value	Median Value	Maximum Value	Exceedance (yes/no)	Number of results	Minimum Value	Mean Value	Median Value	Maximum Value	Exceedance (yes/no)
Biochemical Oxygen Demand	Milligrams per Litre	Monthly	-	-	1	-	< 2	-	-	-	1	-	< 2	-	-	-	1	-	< 2	-	-	-
Conductivity	Millisiemens per cm	Weekly	-	-	4	96	103	98	120	-	4	50	79	88	89	-	3	48	50	48	53	-
Nitrogen (Total)	Milligrams per Litre	Monthly	-	-	1	-	4	-	-	-	1	-	0	-	-	-	1	-	1	-	-	-
Oil and Grease	Milligrams per Litre	Monthly	-	5	1	-	< 5	-	-	no	1	-	< 5	-	-	no	1	-	7	-	-	yes
pH	pH	Weekly	6.5	8.5	4	7.40	7.50	7.40	7.80	no	4	7.40	7.55	7.45	7.90	no	3	7.40	7.47	7.40	7.60	no
Phosphorus (Total)	Milligrams per Litre	Monthly	-	-	1	-	< 0.01	-	-	-	1	-	< 0.01	-	-	-	1	-	< 0.01	-	-	-
Total Dissolved Solids	Milligrams per Litre	Monthly	-	200	1	-	54	-	-	no	1	-	50	-	-	no	1	-	38	-	-	no
Total Suspended Solids	Milligrams per Litre	Monthly	-	-	1	-	< 2	-	-	-	1	-	< 2	-	-	-	1	-	< 2	-	-	-
Zinc	Milligrams per Litre	Monthly	-	-	1	-	< 2	-	-	-	1	-	< 2	-	-	-	1	-	< 2	-	-	-
Monthly Samples Collected					4 April 2016						2 May 2016						6 June 2016					
Monthly Results Obtained					10 May 2016						12 May 2016						15 June 2016					
Monthly Results Published					10 May 2016						1 June 2016						1 July 2016					

Yearly Licence requirements						
Volume Limit	Unit of measure	Monitoring frequency required when discharging	Number of results	Volume Limit	Maximum Value	Exceedance (yes/no)
Liquids discharged to water	kilolitres per day	Daily	365	10000	8541	no

Monitoring point 10
Soil Monitoring

See separate PDF report titled 'Soil Properties Report'

Monitoring point 11
Discharge to Air, Air Emissions Monitoring

Pollutant	Units of measure	Monitoring frequency required	Number of results	July	August	September	October	November	December	January	February	March	April	May	June
Coarse Particulates	Milligrams per cubic meter	2 times a year	2					15						24	
Fine Particulates	Milligrams per cubic meter	2 times a year	2					95						91	
Nitrogen Oxides	Milligrams per cubic meter	2 times a year	2					231						252	
Bi-annual Samples Collected								11 Nov 15						17 May 16	
Bi-annual Results Obtained								27 Nov 15						23 Jun 16	
Bi-annual Results Published								11 Dec 15						1 Jul 16	

Monitoring point 13
Effluent quality monitoring - 4 Day Pond Outlet

Pollutant	Units of measure	Monitoring frequency required when discharging	July	August	September	October	November	December	January	February	March	April	May	June
Biochemical Oxygen Demand	Milligrams per Litre	Monthly	16	4	4	5	5	7	8	7	4	4	4	3
Nitrogen (Total)	Milligrams per Litre	Monthly	4.1	1.9	2.2	2.4	3.1	3.3	6.5	3.8	2.9	2.2	1.6	1.9
pH	pH	Monthly	7.9	8.3	8.1	8.1	8.2	8.2	8.1	8.0	8.1	8.2	8.2	8.2
Phosphorus (Total)	Milligrams per Litre	Monthly	0.28	0.10	0.13	0.61	0.24	0.47	0.65	0.31	0.17	0.16	0.13	0.12
Total Dissolved Solids	Milligrams per Litre	Monthly	760	840	800	1000	930	980	1200	1000	1000	1200	890	670
Total Suspended Solids	Milligrams per Litre	Monthly	25	5	4	7	6	17	26	7	12	9	20	5
Zinc	Milligrams per Litre	Monthly	0.04	0.00	0.04	0.01	0.01	0.02	0.02	0.01	0.03	0.00	0.02	0.00
Monthly Samples Collected			6 Jul 15	3 Aug 15	7 Sep 15	6 Oct 15	2 Nov 15	7 Dec 15	18 Jan 16	1 Feb 16	7 Mar 16	4 Apr 16	2 May 16	6 Jun 16
Monthly Results Obtained			30 Jul 15	28 Aug 15	1 Oct 15	30 Oct 15	10 Nov 15	15 Dec 15	29 Jan 16	9 Feb 16	16 Mar 16	10 May 16	12 May 16	15 Jun 16
Monthly Results Published			18 Aug 15	16 Sep 15	16 Oct 15	20 Nov 15	20 Nov 15	6 Jan 16	9 Feb 16	1 Mar 16	31 Mar 16	10 May 16	1 Jun 16	1 Jul 16

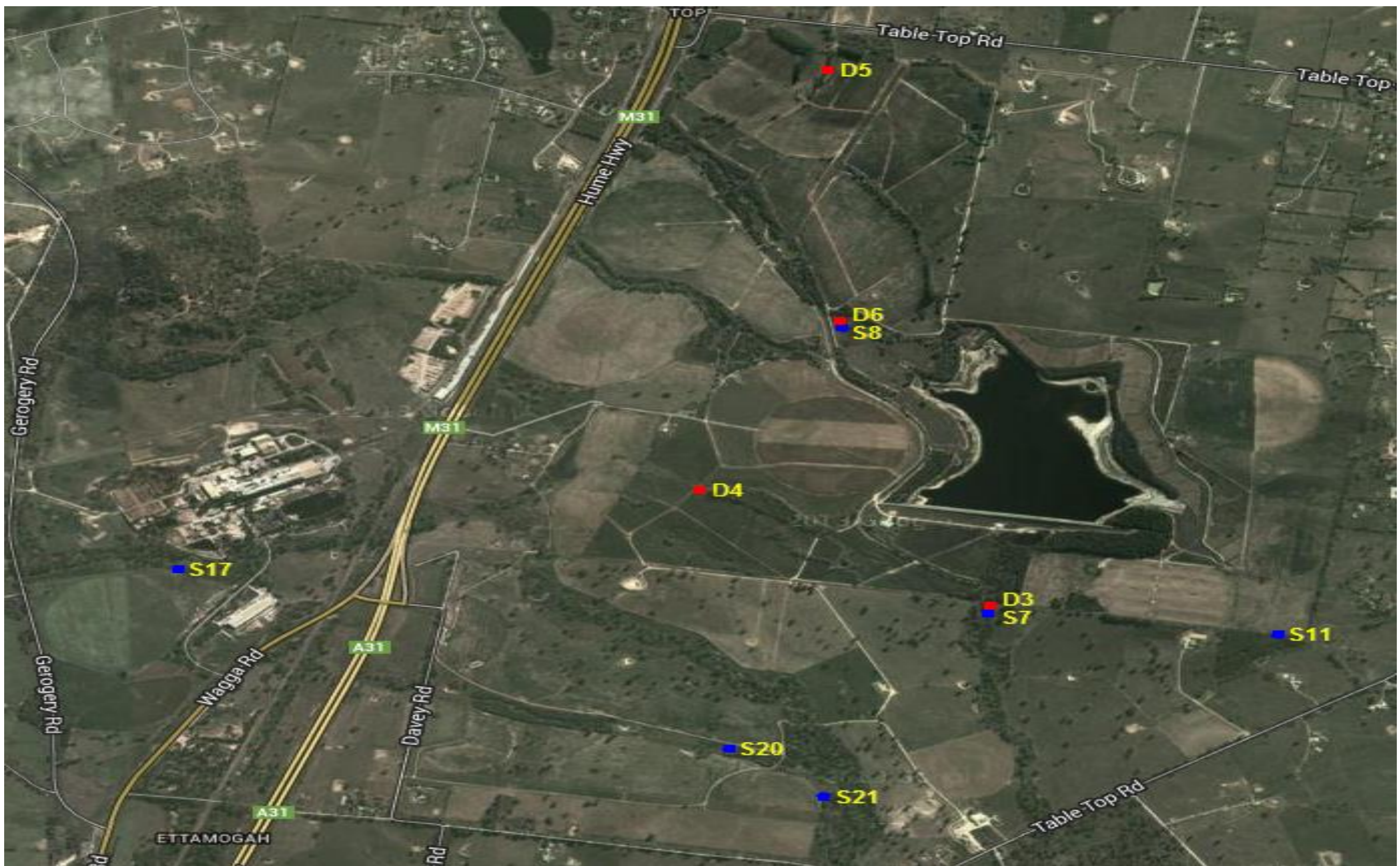
Monitoring points 14 to 23

Groundwater quality monitoring

	Month	August			November			February			May			
		Pollutant	Standing Water Level	pH	Conductivity	Standing Water Level	pH	Conductivity	Standing Water Level	pH	Conductivity	Standing Water Level	pH	Conductivity
			Units of measure	Meters		microsiemens per centimeter	Meters		microsiemens per centimeter	Meters		microsiemens per centimeter	Meters	
Deep Bores	3	44.7	7.5	960	45.4	7.5	960	Dry			44.9	7.4	970	
	4	44.7	7.2	2900	44.9	7.4	3100	44.8	7.0	3200	44.8	7.1	3100	
	5	44.7	7.2	5800	44.7	7.4	6100	44.9	7.1	6400	44.7	7.3	6100	
	6	44.7	8.2	340	44.5	8.2	740	44.5	8.0	700	44.3	8.0	700	
Shallow Bores	7	8.8	7.7	3500	8.8	7.5	3800	9.1	7.3	4200	9.4	7.3	4200	
	8	1.4	6.7	750	1.9	7.0	1600	2.5	7.1	1700	2.6	7.2	1200	
	11	8.3	7.0	6700	8.0	7.2	7100	7.8	7.1	7500	Dry			
	17	4.9	6.5	390	4.9	6.5	390	6.4	6.5	450	Dry			
	20	Dry			Dry			Dry			Dry			
	21	6.8	7.1	2300	6.6	7.2	2300	6.7	7.1	2400	7.0	7.3	2300	
3 Monthly Samples Collected		21 Aug 15			19 Nov 15			17 Feb 16			18 May 16			
3 Monthly Results Obtained		01 Oct 15			24 Nov 15			09 Mar 16			25 May 16			
3 Monthly Results Published		16 Oct 15			11 Dec 15			31 Mar 16			01 Jun 16			

Pollutant	Units of measure	Deep Bores				Shallow Bores					
		3	4	5	6	7	8	11	17	20	21
Nitrate	Milligrams per Litre	0.75	0.00	9.40	0.03	41.00	0.15	0.10	16.00		6.10
Total Nitrogen	Milligrams per Litre	1.3	0.4	9.6	5.3	41.0	0.8	0.1	16.0		6.6
Total Phosphorus	Milligrams per Litre	0.19	0.00	0.07	0.00	0.00	0.12	0.00	0.00		0.07
Annual Samples Collected		21 Aug 15	21 Aug 15	21 Aug 15	21 Aug 15	21 Aug 15	21 Aug 15	21 Aug 15	21 Aug 15	Bore Dry	21 Aug 15
Annual Results Obtained		01 Oct 15	01 Oct 15	01 Oct 15	01 Oct 15	01 Oct 15	01 Oct 15	01 Oct 15	01 Oct 15		01 Oct 15
Annual Results Published		16 Oct 15	16 Oct 15	16 Oct 15	16 Oct 15	16 Oct 15	16 Oct 15	16 Oct 15	16 Oct 15		16 Oct 15

Ettamogah Site map showing Groundwater Bores



Note: Shallow Bores are denoted with blue markers and Deep Bores are denoted by red markers. The water quality of 8 and 9 mile creeks are also monitored, but are not required to be reported by EPL 1272

Non compliance log

Pollutant	Sample dates	Detail
Weekly Sample at Monitoring Point 1	22 February	Sample maximum storage time exceeded. Samples still tested within licence limits, but results discarded and additional samples collected for analysis.
Weekly Sample at Monitoring Point 2	22 February	Sample maximum storage time exceeded. Samples still tested within licence limits, but results discarded and additional samples collected for analysis.
Oil and Grease at Monitoring Point 2	06 June	Exceeded 100 percentile limit (7 mg/L). Internal online monitoring (2 separate units) did not measure an exceedence.

Correction log

Sample date and time	Original data	Corrected data	Date corrected	Date originally published	Reason

Community Complaints

Complaint	Date	Detail