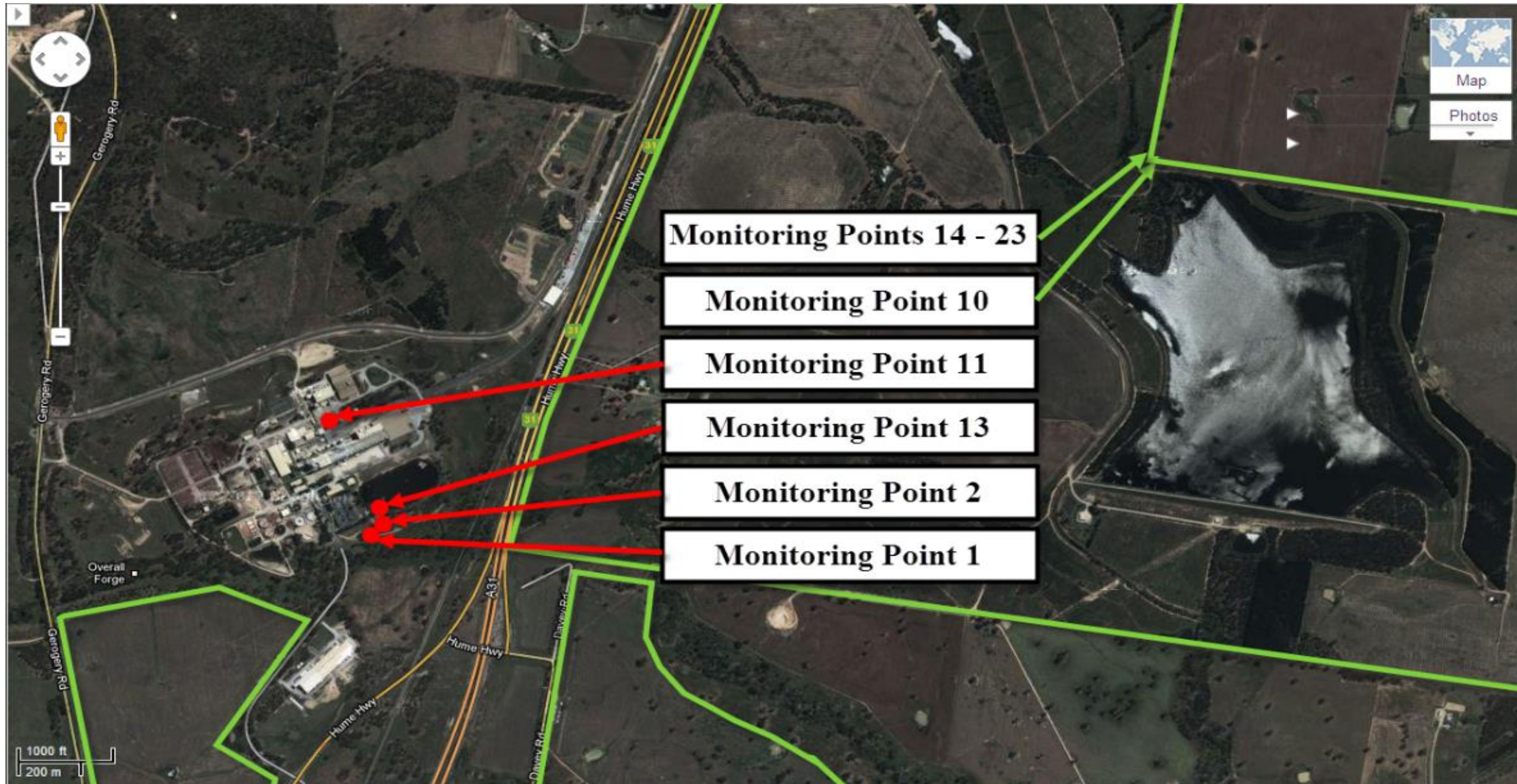


A full copy of our license can be found on the EPA website under the following address  
<http://www.epa.nsw.gov.au/prpoeoapp/ViewPOEOLicence.aspx?DOCID=32757&SYSUID=1&LICID=1272>

Result data last updated                      1 August 2014

**Map of Norske Skog Albury Paper Mills Environmental Protection Licence compliance monitoring sites**



Courtesy of Google Maps



Monitoring point 1

Discharge to waters, Effluent quality and volume monitoring

		Licence requirements			July						August						September					
Pollutant	Units of measure	Monitoring frequency required when discharging	0 percentile limit	100 percentile limit	Number of results	Minimum Value	Mean Value	Median Value	Maximum Value	Exceedance (yes/no)	Number of results	Minimum Value	Mean Value	Median Value	Maximum Value	Exceedance (yes/no)	Number of results	Minimum Value	Mean Value	Median Value	Maximum Value	Exceedance (yes/no)
Biochemical Oxygen Demand	Milligrams per Litre	Weekly	-	20	0	-	-	-	-	-	2	6	6.0	6	6	no	3	5	6.7	6	9	no
Chemical Oxygen Demand	Milligrams per Litre	Weekly	-	-	0	-	-	-	-	-	2	120	130	130	140	no	3	140	153	150	170	no
Colour	Hazen	Weekly	-	-	0	-	-	-	-	-	2	250	275	275	300	no	3	200	240	220	300	no
Copper	Milligrams per Litre	Quarterly	-	0.05	0	-	-	-	-	-	1	-	0.00	-	-	no	0	-	-	-	-	-
Nitrogen (Ammonia)	Milligrams per Litre	Weekly	-	3.0	0	-	-	-	-	-	1	0.9	0.90	0.9	0.9	no	3	< 0.2	0.17	< 0.2	0.5	no
Nitrogen (Total)	Milligrams per Litre	Weekly	-	15	0	-	-	-	-	-	1	1.5	1.50	1.5	1.5	no	3	2.2	2.60	2.5	3.1	no
Oil and Grease	Milligrams per Litre	Weekly	-	10	0	-	-	-	-	-	2	< 1	3.50	3.50	7.00	no	3	< 1	< 1	< 1	< 1	no
pH	pH	Weekly	6.5	8.5	0	-	-	-	-	-	1	8.1	8.10	8.1	8.1	no	2	7.9	8.00	8.0	8.1	no
Phosphorus (Total)	Milligrams per Litre	Weekly	-	0.5	0	-	-	-	-	-	1	0.13	0.13	0.13	0.13	no	3	0.10	0.22	0.24	0.32	no
Total Dissolved Solids	Milligrams per Litre	Weekly	-	2000	0	-	-	-	-	-	1	1100	1100	1100	1100	no	3	800	877	830	1000	no
Total Suspended Solids	Milligrams per Litre	Weekly	-	20	0	-	-	-	-	-	1	< 2	< 2	< 2	< 2	no	3	4.00	4.67	4.00	6.00	no
Zinc	Milligrams per Litre	Monthly	-	0.4	0	-	-	-	-	-	1	-	0.02	-	-	no	1	-	0.02	-	-	no
		Monthly Samples Collected																				19 August 2013
		Monthly Results Obtained																				2 September 2013
		Monthly Results Published																				13 September 2013
		Quarterly Samples Collected																				19 August 2013
		Quarterly Results Obtained																				2 September 2013
		Quarterly Results Published																				13 September 2013
		Licence requirements			October						November						December					
Pollutant	Units of measure	Monitoring frequency required when discharging	0 percentile limit	100 percentile limit	Number of results	Minimum Value	Mean Value	Median Value	Maximum Value	Exceedance (yes/no)	Number of results	Minimum Value	Mean Value	Median Value	Maximum Value	Exceedance (yes/no)	Number of results	Minimum Value	Mean Value	Median Value	Maximum Value	Exceedance (yes/no)
Biochemical Oxygen Demand	Milligrams per Litre	Weekly	-	20	3	8	8.7	8	10	no	4	2	3.3	3	5	no	3	4	5.0	5	6	no
Chemical Oxygen Demand	Milligrams per Litre	Weekly	-	-	3	140	160	160	180	no	4	72	103	110	120	no	3	110	123	130	130	no
Colour	Hazen	Weekly	-	-	3	300	333	300	400	no	4	250	263	250	300	no	3	250	283	300	300	no
Copper	Milligrams per Litre	Quarterly	-	0.05	0	-	-	-	-	-	0	-	-	-	-	-	1	-	0.00	-	-	-
Nitrogen (Ammonia)	Milligrams per Litre	Weekly	-	3.0	3	0.1	0.30	0.2	0.6	no	4	0.1	0.18	0.2	0.3	no	3	< 0.2	0.50	0.6	0.9	no
Nitrogen (Total)	Milligrams per Litre	Weekly	-	15	3	3.3	3.80	4.0	4.1	no	4	1.7	2.42	2.4	3.2	no	3	1.6	1.97	1.8	2.5	no
Oil and Grease	Milligrams per Litre	Weekly	-	10	3	< 1	< 1	< 1	< 1	no	4	< 1	1.50	< 1	6.00	no	3	< 1	< 1	< 1	< 1	no
pH	pH	Weekly	6.5	8.5	3	7.9	7.97	7.9	8.1	no	4	8.0	8.08	8.1	8.2	no	3	8.1	8.13	8.1	8.2	no
Phosphorus (Total)	Milligrams per Litre	Weekly	-	0.5	3	0.17	0.21	0.19	0.27	no	4	0.13	0.17	0.17	0.21	no	3	0.15	0.16	0.16	0.16	no
Total Dissolved Solids	Milligrams per Litre	Weekly	-	2000	3	820	870	850	940	no	4	770	825	825	880	no	3	810	887	890	960	no
Total Suspended Solids	Milligrams per Litre	Weekly	-	20	3	6.00	8.00	8.00	10.00	no	4	< 2	3.00	3.50	5.00	no	3	3.00	3.67	4.00	4.00	no
Zinc	Milligrams per Litre	Monthly	-	0.4	1	-	0.11	-	-	no	1	-	0.08	-	-	no	1	-	0.01	-	-	no
		Monthly Samples Collected																				7 October 2013
		Monthly Results Obtained																				22 October 2013
		Monthly Results Published																				4 November 2013
		Quarterly Samples Collected																				4 November 2013
		Quarterly Results Obtained																				19 November 2013
		Quarterly Results Published																				29 November 2013
		Quarterly Samples Collected																				2 December 2013
		Quarterly Results Obtained																				10 December 2013
		Quarterly Results Published																				11 December 2013
		Quarterly Samples Collected																				9 December 2013
		Quarterly Results Obtained																				3 January 2014
		Quarterly Results Published																				17 January 2014

Monitoring point 1

Discharge to waters, Effluent quality and volume monitoring

Pollutant	Units of measure	Licence requirements			January						February						March					
		Monitoring frequency required when discharging	0 percentile limit	100 percentile limit	Number of results	Minimum Value	Mean Value	Median Value	Maximum Value	Exceedance (yes/no)	Number of results	Minimum Value	Mean Value	Median Value	Maximum Value	Exceedance (yes/no)	Number of results	Minimum Value	Mean Value	Median Value	Maximum Value	Exceedance (yes/no)
Biochemical Oxygen Demand	Milligrams per Litre	Weekly	-	20	2	5	6.0	6	7	no	3	4	5.7	5	8	no	3	< 2	4.0	5	7	no
Chemical Oxygen Demand	Milligrams per Litre	Weekly	-	-	2	140	140	140	140	no	3	140	150	150	160	no	3	140	153	140	180	no
Colour	Hazen	Weekly	-	-	2	280	280	280	280	no	3	350	350	350	350	no	3	300	333	300	400	no
Copper	Milligrams per Litre	Quarterly	-	0.05	1	-	0.00	-	-	no	0	-	-	-	-	no	0	-	-	-	-	-
Nitrogen (Ammonia)	Milligrams per Litre	Weekly	-	3.0	2	0.1	0.25	0.3	0.4	no	3	0.1	0.27	0.1	0.6	no	3	< 0.2	0.07	< 0.2	0.2	no
Nitrogen (Total)	Milligrams per Litre	Weekly	-	15	2	2.3	2.49	2.5	2.7	no	3	2.4	3.47	3.3	4.7	no	3	2.0	2.37	2.4	2.7	no
Oil and Grease	Milligrams per Litre	Weekly	-	10	2	< 1	< 1	< 1	< 1	no	3	< 1	< 1	< 1	< 1	no	3	< 1	< 1	< 1	< 1	no
pH	pH	Weekly	6.5	8.5	2	8.1	8.15	8.2	8.2	no	3	8.2	8.23	8.2	8.3	no	3	8.0	8.13	8.1	8.3	no
Phosphorus (Total)	Milligrams per Litre	Weekly	-	0.5	2	0.18	0.23	0.23	0.28	no	3	0.21	0.22	0.21	0.24	no	3	0.15	0.20	0.22	0.24	no
Total Dissolved Solids	Milligrams per Litre	Weekly	-	2000	2	920	960	960	1000	no	3	1100	1133	1100	1200	no	3	1100	1100	1100	1100	no
Total Suspended Solids	Milligrams per Litre	Weekly	-	20	2	12.00	12.00	12.00	12.00	no	3	15.00	15.67	16.00	16.00	no	3	7.00	9.33	10.00	11.00	no
Zinc	Milligrams per Litre	Monthly	-	0.4	1	-	0.01	-	-	no	1	-	0.01	-	-	no	1	-	0.03	-	-	no
		Monthly Samples Collected			20 January 2014						10 February 2014						3 March 2014					
		Monthly Results Obtained			4 February 2014						31 March 2014						31 March 2014					
		Monthly Results Published			7 February 2014						17 April 2014						17 April 2014					
		Quarterly Samples Collected			20 January 2014																	
		Quarterly Results Obtained			4 February 2014																	
		Quarterly Results Published			7 February 2014																	

Pollutant	Units of measure	Licence requirements			April						May						June					
		Monitoring frequency required when discharging	0 percentile limit	100 percentile limit	Number of results	Minimum Value	Mean Value	Median Value	Maximum Value	Exceedance (yes/no)	Number of results	Minimum Value	Mean Value	Median Value	Maximum Value	Exceedance (yes/no)	Number of results	Minimum Value	Mean Value	Median Value	Maximum Value	Exceedance (yes/no)
Biochemical Oxygen Demand	Milligrams per Litre	Weekly	-	20	0	-	-	-	-	-	0	-	-	-	-	-	0	-	-	-	-	-
Chemical Oxygen Demand	Milligrams per Litre	Weekly	-	-	0	-	-	-	-	-	0	-	-	-	-	-	0	-	-	-	-	-
Colour	Hazen	Weekly	-	-	0	-	-	-	-	-	0	-	-	-	-	-	0	-	-	-	-	-
Copper	Milligrams per Litre	Quarterly	-	0.05	0	-	-	-	-	-	0	-	-	-	-	-	0	-	-	-	-	-
Nitrogen (Ammonia)	Milligrams per Litre	Weekly	-	3.0	0	-	-	-	-	-	0	-	-	-	-	-	0	-	-	-	-	-
Nitrogen (Total)	Milligrams per Litre	Weekly	-	15	0	-	-	-	-	-	0	-	-	-	-	-	0	-	-	-	-	-
Oil and Grease	Milligrams per Litre	Weekly	-	10	0	-	-	-	-	-	0	-	-	-	-	-	0	-	-	-	-	-
pH	pH	Weekly	6.5	8.5	0	-	-	-	-	-	0	-	-	-	-	-	0	-	-	-	-	-
Phosphorus (Total)	Milligrams per Litre	Weekly	-	0.5	0	-	-	-	-	-	0	-	-	-	-	-	0	-	-	-	-	-
Total Dissolved Solids	Milligrams per Litre	Weekly	-	2000	0	-	-	-	-	-	0	-	-	-	-	-	0	-	-	-	-	-
Total Suspended Solids	Milligrams per Litre	Weekly	-	20	0	-	-	-	-	-	0	-	-	-	-	-	0	-	-	-	-	-
Zinc	Milligrams per Litre	Monthly	-	0.4	0	-	-	-	-	-	0	-	-	-	-	-	0	-	-	-	-	-
		Monthly Samples Collected																				
		Monthly Results Obtained																				
		Monthly Results Published																				
		Quarterly Samples Collected																				
		Quarterly Results Obtained																				
		Quarterly Results Published																				

Pollutant	Units of measure	Monitoring frequency required when discharging	Yearly Licence requirements								
			Number of results	Minimum Value	Maximum Value	50 percentile limit	50 percentile value	Exceedance (yes/no)	90 percentile limit	90 percentile value	Exceedance (yes/no)
Biochemical Oxygen Demand	Milligrams per Litre	Weekly	23	< 2	10	14	5.0	no	18	8.0	no
Nitrogen (Ammonia)	Milligrams per Litre	Weekly	22	< 0.2	1	-	-	no	2.0	0.60	no
Nitrogen (Total)	Milligrams per Litre	Weekly	22	1.5	5	4	2.5	no	7	3.9	no
Phosphorus (Total)	Milligrams per Litre	Weekly	22	0.1	0	-	-	no	0.3	0.27	no
Total Dissolved Solids	Milligrams per Litre	Weekly	22	770.0	1200	1650	930	no	-	-	-

Volume Limit	Unit of measure	Yearly Licence requirements				
		Monitoring frequency required when discharging	Number of results	Volume Limit	Maximum Value	Exceedance (yes/no)
Liquids discharged to water	kilolitres per day	Daily	159	10000	9043	no

Monitoring point 2

Discharge to waters, Cooling Water quality and volume monitoring

		Licence requirements			July						August						September						
Pollutant	Units of measure	Monitoring frequency required when discharging	0 percentile limit	100 percentile limit	Number of results	Minimum Value	Mean Value	Median Value	Maximum Value	Exceedance (yes/no)	Number of results	Minimum Value	Mean Value	Median Value	Maximum Value	Exceedance (yes/no)	Number of results	Minimum Value	Mean Value	Median Value	Maximum Value	Exceedance (yes/no)	
Biochemical Oxygen Demand	Milligrams per Litre	Monthly	-	-	1	-	< 2	-	-	-	1	-	< 2	-	-	-	1	-	3	-	-	-	
Conductivity	Millisiemens per cm	Weekly	-	-	5	66	79	82	92	-	4	92	95	93	103	-	5	99	100	100	101	-	
Nitrogen (Total)	Milligrams per Litre	Monthly	-	-	1	-	0	-	-	-	1	-	< 2	-	-	-	1	-	0	-	-	-	
Oil and Grease	Milligrams per Litre	Monthly	-	5	1	-	< 1	-	-	no	0	-	-	-	-	-	1	-	< 1	-	-	no	
pH	pH	Weekly	6.5	8.5	5	7.40	7.62	7.60	7.80	no	4	7.60	7.60	7.60	7.60	no	5	7.50	7.58	7.60	7.60	no	
Phosphorus (Total)	Milligrams per Litre	Monthly	-	-	1	-	< 0.01	-	-	-	1	-	< 0.01	-	-	-	1	-	< 0.01	-	-	-	
Total Dissolved Solids	Milligrams per Litre	Monthly	-	200	1	-	46	-	-	no	1	-	60	-	-	no	1	-	68	-	-	no	
Total Suspended Solids	Milligrams per Litre	Monthly	-	-	1	-	< 2	-	-	-	1	-	< 2	-	-	-	1	-	< 2	-	-	-	
Zinc	Milligrams per Litre	Monthly	-	-	1	-	< 2	-	-	-	1	-	< 2	-	-	-	1	-	< 2	-	-	-	
		Monthly Samples Collected				1 July 2013						5 August 2013						2 September 2013					
		Monthly Results Obtained				9 July 2013						13 August 2013						12 September 2013					
		Monthly Results Published				23 July 2013						15 August 2013						13 September 2013					

		Licence requirements			October						November						December						
Pollutant	Units of measure	Monitoring frequency required when discharging	0 percentile limit	100 percentile limit	Number of results	Minimum Value	Mean Value	Median Value	Maximum Value	Exceedance (yes/no)	Number of results	Minimum Value	Mean Value	Median Value	Maximum Value	Exceedance (yes/no)	Number of results	Minimum Value	Mean Value	Median Value	Maximum Value	Exceedance (yes/no)	
Biochemical Oxygen Demand	Milligrams per Litre	Monthly	-	-	1	-	< 2	-	-	-	1	-	< 2	-	-	-	1	-	2	-	-	-	
Conductivity	Millisiemens per cm	Weekly	-	-	4	104	108	108	112	-	4	106	108	108	110	-	5	106	115	109	128	-	
Nitrogen (Total)	Milligrams per Litre	Monthly	-	-	1	-	0	-	-	-	1	-	0	-	-	-	1	-	0	-	-	-	
Oil and Grease	Milligrams per Litre	Monthly	-	5	1	-	< 1	-	-	no	1	-	5	-	-	no	1	-	< 1	-	-	no	
pH	pH	Weekly	6.5	8.5	4	7.50	7.58	7.60	7.60	no	4	7.60	7.70	7.70	7.80	no	5	7.50	7.60	7.60	7.70	no	
Phosphorus (Total)	Milligrams per Litre	Monthly	-	-	1	-	< 0.01	-	-	-	1	-	< 0.01	-	-	-	1	-	0	-	-	-	
Total Dissolved Solids	Milligrams per Litre	Monthly	-	200	1	-	70	-	-	no	1	-	55	-	-	no	1	-	71	-	-	no	
Total Suspended Solids	Milligrams per Litre	Monthly	-	-	1	-	< 2	-	-	-	1	-	< 2	-	-	-	1	-	< 2	-	-	-	
Zinc	Milligrams per Litre	Monthly	-	-	1	-	< 2	-	-	-	1	-	< 2	-	-	-	1	-	< 2	-	-	-	
		Monthly Samples Collected				7 October 2013						11 November 2013						2 December 2013					
		Monthly Results Obtained				22 October 2013						19 November 2013						10 December 2013					
		Monthly Results Published				4 November 2013						29 November 2013						11 December 2013					

Monitoring point 2

Discharge to waters, Cooling Water quality and volume monitoring

		Licence requirements			January						February						March						
Pollutant	Units of measure	Monitoring frequency required when discharging	0 percentile limit	100 percentile limit	Number of results	Minimum Value	Mean Value	Median Value	Maximum Value	Exceedance (yes/no)	Number of results	Minimum Value	Mean Value	Median Value	Maximum Value	Exceedance (yes/no)	Number of results	Minimum Value	Mean Value	Median Value	Maximum Value	Exceedance (yes/no)	
Biochemical Oxygen Demand	Milligrams per Litre	Monthly	-	-	1	-	< 2	-	-	-	1	-	< 2	-	-	-	1	-	< 2	-	-	-	
Conductivity	Millisiemens per cm	Weekly	-	-	4	100	110	113	116	-	4	116	118	118	122	-	5	97	111	114	119	-	
Nitrogen (Total)	Milligrams per Litre	Monthly	-	-	1	-	0	-	-	-	1	-	0	-	-	-	1	-	0	-	-	-	
Oil and Grease	Milligrams per Litre	Monthly	-	5	1	-	< 1	-	-	no	1	-	< 1	-	-	no	1	-	< 1	-	-	no	
pH	pH	Weekly	6.5	8.5	4	7.50	7.63	7.65	7.70	no	4	7.50	7.65	7.70	7.70	no	5	7.60	7.66	7.70	7.70	no	
Phosphorus (Total)	Milligrams per Litre	Monthly	-	-	1	-	< 0.01	-	-	-	1	-	0	-	-	-	1	-	< 0.01	-	-	-	
Total Dissolved Solids	Milligrams per Litre	Monthly	-	200	1	-	61	-	-	no	1	-	110	-	-	no	1	-	55	-	-	no	
Total Suspended Solids	Milligrams per Litre	Monthly	-	-	1	-	< 2	-	-	-	1	-	< 2	-	-	-	1	-	< 2	-	-	-	
Zinc	Milligrams per Litre	Monthly	-	-	1	-	< 2	-	-	-	1	-	< 2	-	-	-	1	-	< 2	-	-	-	
		Monthly Samples Collected				6 January 2014						3 February 2014						3 March 2014					
		Monthly Results Obtained				21 January 2014						24 February 2014						31 March 2014					
		Monthly Results Published				7 February 2014						13 March 2014						17 April 2014					

		Licence requirements			April						May						June						
Pollutant	Units of measure	Monitoring frequency required when discharging	0 percentile limit	100 percentile limit	Number of results	Minimum Value	Mean Value	Median Value	Maximum Value	Exceedance (yes/no)	Number of results	Minimum Value	Mean Value	Median Value	Maximum Value	Exceedance (yes/no)	Number of results	Minimum Value	Mean Value	Median Value	Maximum Value	Exceedance (yes/no)	
Biochemical Oxygen Demand	Milligrams per Litre	Monthly	-	-	1	-	< 2	-	-	-	1	-	< 2	-	-	-	1	-	< 2	-	-	-	
Conductivity	Millisiemens per cm	Weekly	-	-	4	115	117	118	119	-	4	97	110	113	117	-	5	100	110	110	120	-	
Nitrogen (Total)	Milligrams per Litre	Monthly	-	-	1	-	< 2	-	-	-	1	-	0	-	-	-	1	-	0	-	-	-	
Oil and Grease	Milligrams per Litre	Monthly	-	5	1	-	< 1	-	-	no	1	-	< 1	-	-	no	1	-	< 1	-	-	no	
pH	pH	Weekly	6.5	8.5	4	7.50	7.58	7.55	7.70	no	4	7.60	7.70	7.70	7.80	no	5	7.40	7.60	7.50	8.00	no	
Phosphorus (Total)	Milligrams per Litre	Monthly	-	-	1	-	< 0.01	-	-	-	1	-	< 0.01	-	-	-	1	-	< 0.01	-	-	-	
Total Dissolved Solids	Milligrams per Litre	Monthly	-	200	1	-	79	-	-	no	1	-	74	-	-	no	1	-	61	-	-	no	
Total Suspended Solids	Milligrams per Litre	Monthly	-	-	1	-	< 2	-	-	-	1	-	< 2	-	-	-	1	-	< 2	-	-	-	
Zinc	Milligrams per Litre	Monthly	-	-	1	-	< 2	-	-	-	1	-	< 2	-	-	-	1	-	< 2	-	-	-	
		Monthly Samples Collected				7 April 2014						5 May 2014						2 June 2014					
		Monthly Results Obtained				22 May 2014						22 May 2014						12 June 2014					
		Monthly Results Published				10 June 2014						10 June 2014						30 June 2014					

Yearly Licence requirements						
Volume Limit	Unit of measure	Monitoring frequency required when discharging	Number of results	Volume Limit	Maximum Value	Exceedance (yes/no)
Liquids discharged to water	kilolitres per day	Daily	365	10000	8011	no



**Monitoring point 10**
**Soil Monitoring**

See separate PDF report titled 'Soil Properties Report'

**Monitoring point 11**
**Discharge to Air, Air Emissions Monitoring**

Pollutant	Units of measure	Monitoring frequency required	Number of results	July	August	September	October	November	December	January	February	March	April	May	June
Coarse Particulates	Milligrams per cubic meter	2 times a year	2					21							16
Fine Particulates	Milligrams per cubic meter	2 times a year	2					121							179
Nitrogen Oxides	Milligrams per cubic meter	2 times a year	2					237							216
Bi-annual Samples Collected								6 Nov 13							18 Jun 14
Bi-annual Results Obtained								19 Nov 13							17 Jul 14
Bi-annual Results Published								29 Nov 13							30 Jun 14

**Monitoring point 13**
**Effluent quality monitoring - 4 Day Pond Outlet**

Pollutant	Units of measure	Monitoring frequency required when discharging	July	August	September	October	November	December	January	February	March	April	May	June
Biochemical Oxygen Demand	Milligrams per Litre	Monthly	6	6	5	8	4	4	8	6	3	28	44	26
Nitrogen (Total)	Milligrams per Litre	Monthly	3.1	2.7	2.1	3.3	2.4	1.4	4.0	3.7	2.3	2.5	5.0	3.8
pH	pH	Monthly	7.8	7.9	8.1	7.9	8.1	8.1	8.6	8.1	8.2	7.8	7.8	8.0
Phosphorus (Total)	Milligrams per Litre	Monthly	0.28	0.28	0.11	0.29	0.14	0.15	0.94	0.29	0.19	0.19	0.50	0.36
Total Dissolved Solids	Milligrams per Litre	Monthly	890	1000	1100	930	790	840	700	1000	1100	970	1100	1000
Total Suspended Solids	Milligrams per Litre	Monthly	8	7	5	12	5	0	20	32	9	14	52	23
Zinc	Milligrams per Litre	Monthly	0.02	0.08	0.02	0.11	0.05	0.02	0.09	0.03	0.03	0.02	0.02	0.02
Monthly Samples Collected			1 Jul 13	5 Aug 13	2 Sep 13	7 Oct 13	11 Nov 13	2 Dec 13	6 Jan 14	3 Feb 14	3 Mar 14	7 Apr 14	5 May 14	2 Jun 14
Monthly Results Obtained			9 Jul 13	13 Aug 13	12 Sep 13	22 Oct 13	19 Nov 13	10 Dec 13	21 Jan 14	24 Feb 14	31 Mar 14	22 May 14	22 May 14	12 Jun 14
Monthly Results Published			23 Jul 13	15 Aug 13	13 Sep 13	4 Nov 13	29 Nov 13	11 Dec 13	7 Feb 14	13 Mar 14	17 Apr 14	10 Jun 14	10 Jun 14	30 Jun 14



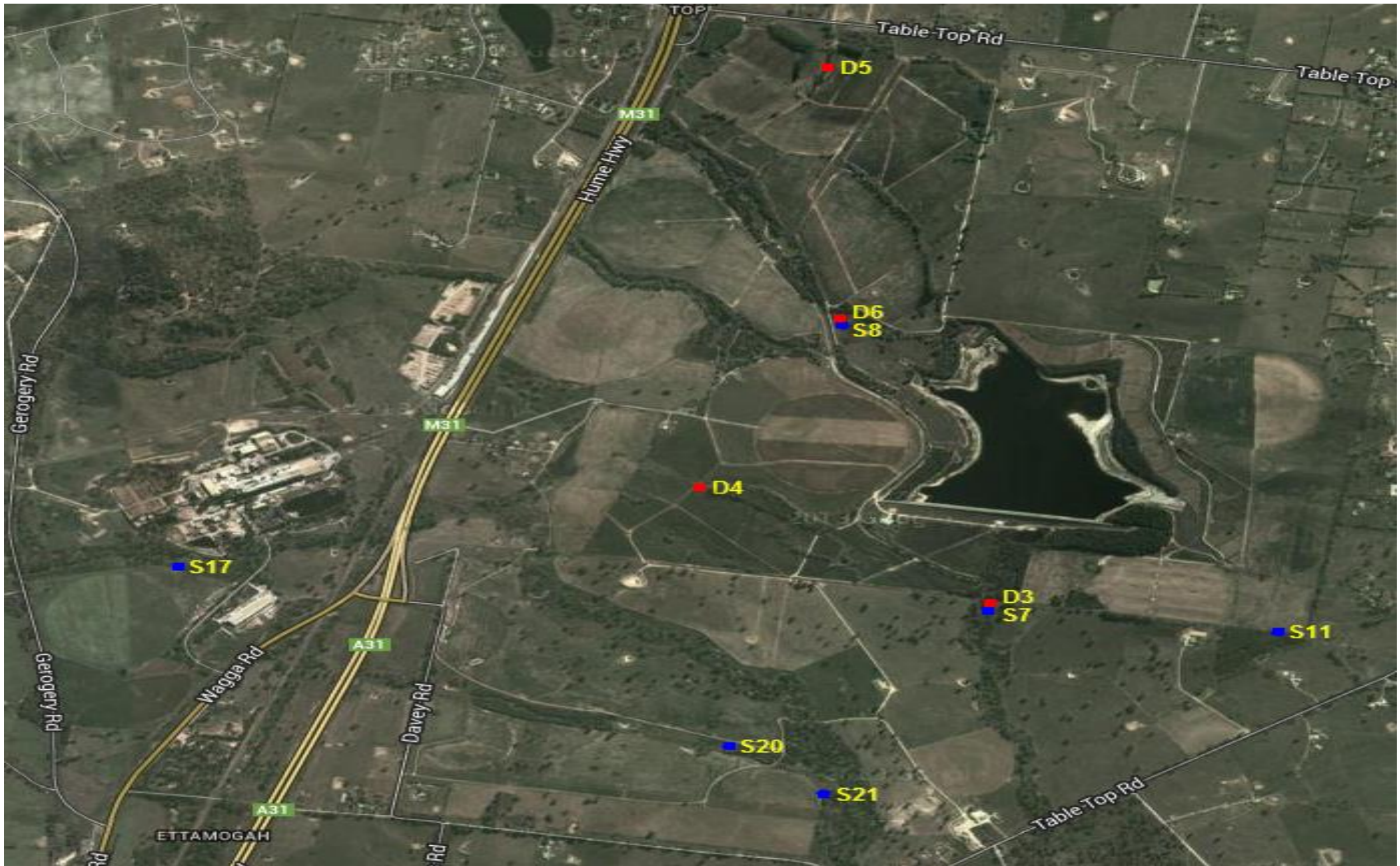
Monitoring points 14 to 23

Groundwater quality monitoring

	Month	August			November			February			May		
	Pollutant	Standing Water Level	pH	Conductivity	Standing Water Level	pH	Conductivity	Standing Water Level	pH	Conductivity	Standing Water Level	pH	Conductivity
	Units of measure	Meters		microsiemens per centimeter	Meters		microsiemens per centimeter	Meters		microsiemens per centimeter	Meters		microsiemens per centimeter
Deep Bores	3	44.7	7.2	1000	44.7			44.7			44.7	6.8	1011
	4	44.7	7.1	2800	44.7	7.0	3090	44.7	6.9	3110	44.7	7.0	3110
	5	47.0	6.9	5400	44.7	7.2	6030	44.7	6.8	6160	44.7	7.2	6120
	6	45.4	8.1	680	45.2	8.3	800	46.0	8.2	715	45.2	8.2	713
Shallow Bores	7	9.1	7.5	4100	9.1	7.6	4280	Dry			9.2	7.2	4540
	8	1.3	6.9	370	2.1	6.9	1669	2.4	6.9	1923	1.9	6.9	1841
	11	9.1	7.1	5900	8.7	7.1	6750	8.7	7.0	6980	8.6	6.9	6820
	17	5.0	6.7	440	5.0	7.5	434	5.6	6.6	546	5.6	6.6	457
	20	10.7	7.5	1200	10.5	7.4	1230	Dry			Dry		
	21	6.1	7.2	2200	5.9	7.4	2370	8.1	7.2	2390	6.4	7.2	2390
3 Monthly Samples Collected		21 Aug 13			02 Dec 13			19 Feb 14			21 May 14		
3 Monthly Results Obtained		02 Sep 13			06 Dec 13			27 Feb 14			17 Jun 14		
3 Monthly Results Published		13 Sep 13						13 Mar 14			30 Jun 14		

Pollutant	Units of measure	Deep Bores					Shallow Bores				
		3	4	5	6	7	8	11	17	20	21
Nitrate	Milligrams per Litre	0.32	1.50	13.00	0.00	26.00	0.24	0.40	12.00	14.00	6.40
Total Nitrogen	Milligrams per Litre	0.5	1.5	13.0	2.3	26.0	1.4	0.7	13.0	16.0	7.2
Total Phosphorus	Milligrams per Litre	0.00	0.00	0.00	0.00	0.06	0.16	0.08	1.20	0.69	0.09
Annual Samples Collected		21 Aug 13	21 Aug 13	21 Aug 13	21 Aug 13	21 Aug 13	21 Aug 13	21 Aug 13	21 Aug 13	21 Aug 13	21 Aug 13
Annual Results Obtained		02 Sep 13	02 Sep 13	02 Sep 13	02 Sep 13	02 Sep 13	02 Sep 13	02 Sep 13	02 Sep 13	02 Sep 13	02 Sep 13
Annual Results Published		13 Sep 13	13 Sep 13	13 Sep 13	13 Sep 13	13 Sep 13	13 Sep 13	13 Sep 13	13 Sep 13	13 Sep 13	13 Sep 13

Ettamogah Site map showing Groundwater Bores



Note: Shallow Bores are denoted with blue markers and Deep Bores are denoted by red markers. The water quality of 8 and 9 mile creeks are also monitored, but are not required to be reported by EPL 1272



### Non compliance log

Pollutant	Sample dates	Detail
Oil and Grease	August	Missed collecting monthly sample
pH, TDS, TSS, Total N and Total P	19 August	Sub-contracting laboratory did not complete all required test work on weekly samples
pH	23 September	Sub-contracting laboratory did not complete all required test work on weekly samples

### Correction log

Sample date and time	Original data	Corrected data	Date corrected	Date originally published	Reason

### Community Complaints

Complaint	Date	Detail
Odour	26/06/2014	Odour from primary clarification unit. Peroxide dosing increased to rectify