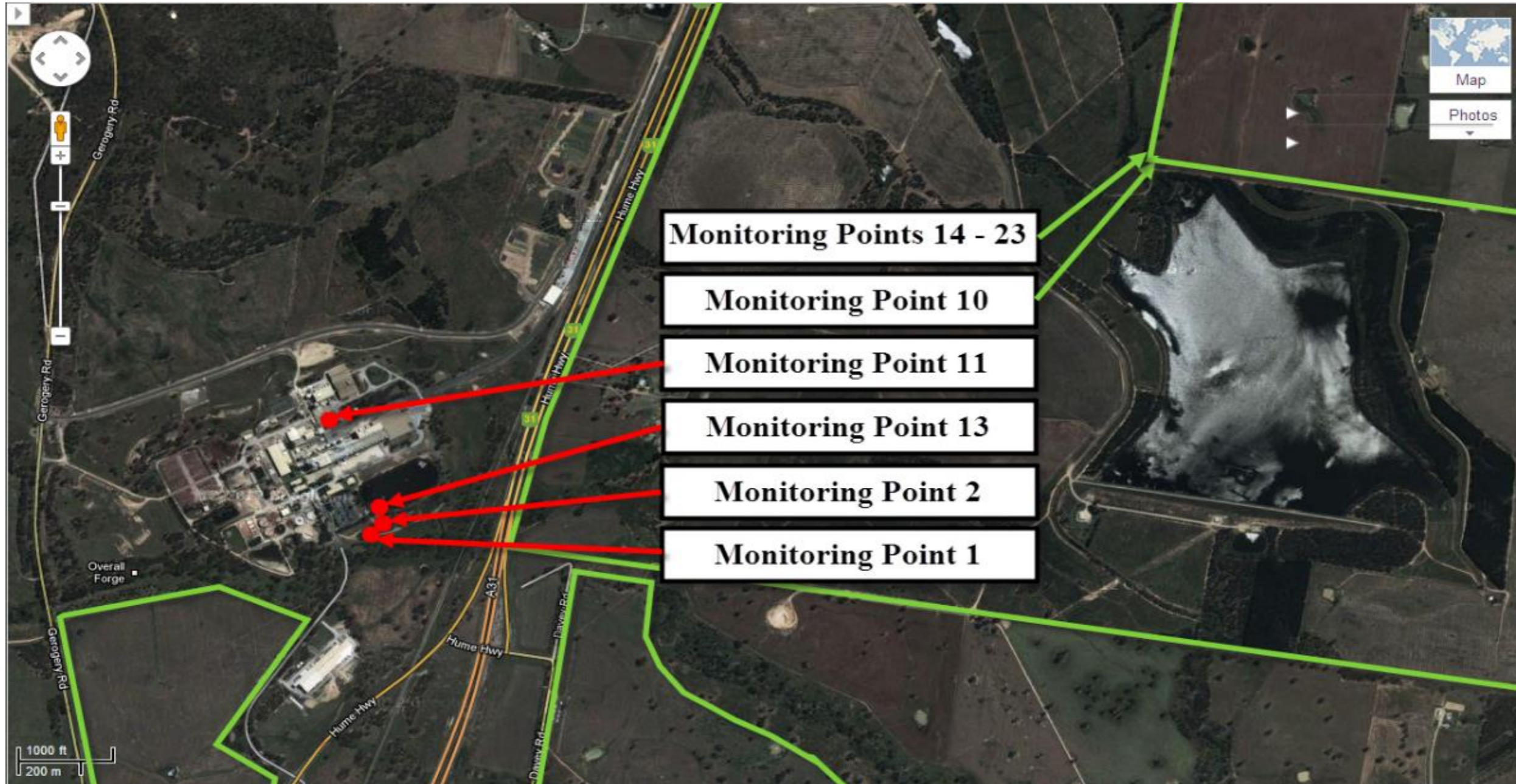


A full copy of our license can be found on the EPA website under the following address  
<http://www.epa.nsw.gov.au/prpoeoapp/ViewPOEOLicence.aspx?DOCID=32757&SYSUID=1&LICID=1272>

Result data last updated                      28 July 2017

**Map of Norske Skog Albury Paper Mills Environmental Protection Licence compliance monitoring sites**



Courtesy of Google Maps

Monitoring point

1

Discharge to waters, Effluent quality and volume monitoring

Pollutant	Units of measure	Licence requirements			July						August						September					
		Monitoring frequency required when discharging	0 percentile limit	100 percentile limit	Number of results	Minimum Value	Mean Value	Median Value	Maximum Value	Exceedance (yes/no)	Number of results	Minimum Value	Mean Value	Median Value	Maximum Value	Exceedance (yes/no)	Number of results	Minimum Value	Mean Value	Median Value	Maximum Value	Exceedance (yes/no)
Biochemical Oxygen Demand	Milligrams per Litre	Weekly	-	20	0	-	-	-	-	-	0	-	-	-	-	-	0	-	-	-	-	-
Chemical Oxygen Demand	Milligrams per Litre	Weekly	-	-	0	-	-	-	-	-	0	-	-	-	-	-	0	-	-	-	-	-
Colour	Hazen	Weekly	-	-	0	-	-	-	-	-	0	-	-	-	-	-	0	-	-	-	-	-
Copper	Milligrams per Litre	Quarterly	-	0.05	0	-	-	-	-	-	0	-	-	-	-	-	0	-	-	-	-	-
Nitrogen (Ammonia)	Milligrams per Litre	Weekly	-	3.0	0	-	-	-	-	-	0	-	-	-	-	-	0	-	-	-	-	-
Nitrogen (Total)	Milligrams per Litre	Weekly	-	15	0	-	-	-	-	-	0	-	-	-	-	-	0	-	-	-	-	-
Oil and Grease	Milligrams per Litre	Weekly	-	10	0	-	-	-	-	-	0	-	-	-	-	-	0	-	-	-	-	-
pH	pH	Weekly	6.5	8.5	0	-	-	-	-	-	0	-	-	-	-	-	0	-	-	-	-	-
Phosphorus (Total)	Milligrams per Litre	Weekly	-	0.5	0	-	-	-	-	-	0	-	-	-	-	-	0	-	-	-	-	-
Total Dissolved Solids	Milligrams per Litre	Weekly	-	2000	0	-	-	-	-	-	0	-	-	-	-	-	0	-	-	-	-	-
Total Suspended Solids	Milligrams per Litre	Weekly	-	20	0	-	-	-	-	-	0	-	-	-	-	-	0	-	-	-	-	-
Zinc	Milligrams per Litre	Monthly	-	0.4	0	-	-	-	-	-	0	-	-	-	-	-	0	-	-	-	-	-
		Monthly Samples Collected																				
		Monthly Results Obtained																				
		Monthly Results Published																				
		Quarterly Samples Collected																				
		Quarterly Results Obtained																				
		Quarterly Results Published																				

Pollutant	Units of measure	Licence requirements			October						November						December					
		Monitoring frequency required when discharging	0 percentile limit	100 percentile limit	Number of results	Minimum Value	Mean Value	Median Value	Maximum Value	Exceedance (yes/no)	Number of results	Minimum Value	Mean Value	Median Value	Maximum Value	Exceedance (yes/no)	Number of results	Minimum Value	Mean Value	Median Value	Maximum Value	Exceedance (yes/no)
Biochemical Oxygen Demand	Milligrams per Litre	Weekly	-	20	3	3	3.7	3	5	no	4	2	3.3	3	6	no	0	-	-	-	-	-
Chemical Oxygen Demand	Milligrams per Litre	Weekly	-	-	3	120	121	120	124	no	4	119	125	120	140	no	0	-	-	-	-	-
Colour	Hazen	Weekly	-	-	3	200	247	240	300	no	4	240	260	250	300	no	0	-	-	-	-	-
Copper	Milligrams per Litre	Quarterly	-	0.05	1	-	0.00	-	-	no	0	-	-	-	-	-	0	-	-	-	-	-
Nitrogen (Ammonia)	Milligrams per Litre	Weekly	-	3.0	3	< 0.2	0.10	< 0.2	0.3	no	4	< 0.2	0.03	< 0.2	0.1	no	0	-	-	-	-	-
Nitrogen (Total)	Milligrams per Litre	Weekly	-	15	3	1.8	2.03	2.0	2.3	no	4	1.1	1.60	1.7	2.0	no	0	-	-	-	-	-
Oil and Grease	Milligrams per Litre	Weekly	-	10	3	< 1	< 1	< 1	< 1	no	4	< 1	< 1	< 1	< 1	no	0	-	-	-	-	-
pH	pH	Weekly	6.5	8.5	3	8.1	8.23	8.3	8.3	no	4	8.3	8.32	8.3	8.4	no	0	-	-	-	-	-
Phosphorus (Total)	Milligrams per Litre	Weekly	-	0.5	3	0.09	0.14	0.15	0.19	no	4	< 0.01	0.07	0.08	0.10	no	0	-	-	-	-	-
Total Dissolved Solids	Milligrams per Litre	Weekly	-	2000	3	830	892	860	985	no	4	933	963	966	986	no	0	-	-	-	-	-
Total Suspended Solids	Milligrams per Litre	Weekly	-	20	3	3.00	8.67	5.00	18.00	no	4	< 2	< 2	< 2	< 2	no	0	-	-	-	-	-
Zinc	Milligrams per Litre	Monthly	-	0.4	1	-	0.02	-	-	no	1	-	0.02	-	-	no	0	-	-	-	-	-
		Monthly Samples Collected			17 October 2016						7 November 2016											
		Monthly Results Obtained			25 October 2016						17 November 2016											
		Monthly Results Published			4 November 2016						6 December 2016											
		Quarterly Samples Collected			17 October 2016																	
		Quarterly Results Obtained			25 October 2016																	
		Quarterly Results Published			4 November 2016																	



Monitoring point

1

Discharge to waters, Effluent quality and volume monitoring

Pollutant	Units of measure	Licence requirements			January						February						March					
		Monitoring frequency required when discharging	0 percentile limit	100 percentile limit	Number of results	Minimum Value	Mean Value	Median Value	Maximum Value	Exceedance (yes/no)	Number of results	Minimum Value	Mean Value	Median Value	Maximum Value	Exceedance (yes/no)	Number of results	Minimum Value	Mean Value	Median Value	Maximum Value	Exceedance (yes/no)
Biochemical Oxygen Demand	Milligrams per Litre	Weekly	-	20	0	-	-	-	-	-	0	-	-	-	-	-	0	-	-	-	-	-
Chemical Oxygen Demand	Milligrams per Litre	Weekly	-	-	0	-	-	-	-	-	0	-	-	-	-	-	0	-	-	-	-	-
Colour	Hazen	Weekly	-	-	0	-	-	-	-	-	0	-	-	-	-	-	0	-	-	-	-	-
Copper	Milligrams per Litre	Quarterly	-	0.05	0	-	-	-	-	-	0	-	-	-	-	-	0	-	-	-	-	-
Nitrogen (Ammonia)	Milligrams per Litre	Weekly	-	3.0	0	-	-	-	-	-	0	-	-	-	-	-	0	-	-	-	-	-
Nitrogen (Total)	Milligrams per Litre	Weekly	-	15	0	-	-	-	-	-	0	-	-	-	-	-	0	-	-	-	-	-
Oil and Grease	Milligrams per Litre	Weekly	-	10	0	-	-	-	-	-	0	-	-	-	-	-	0	-	-	-	-	-
pH	pH	Weekly	6.5	8.5	0	-	-	-	-	-	0	-	-	-	-	-	0	-	-	-	-	-
Phosphorus (Total)	Milligrams per Litre	Weekly	-	0.5	0	-	-	-	-	-	0	-	-	-	-	-	0	-	-	-	-	-
Total Dissolved Solids	Milligrams per Litre	Weekly	-	2000	0	-	-	-	-	-	0	-	-	-	-	-	0	-	-	-	-	-
Total Suspended Solids	Milligrams per Litre	Weekly	-	20	0	-	-	-	-	-	0	-	-	-	-	-	0	-	-	-	-	-
Zinc	Milligrams per Litre	Monthly	-	0.4	0	-	-	-	-	-	0	-	-	-	-	-	0	-	-	-	-	-
		Monthly Samples Collected																				
		Monthly Results Obtained																				
		Monthly Results Published																				
		Quarterly Samples Collected																				
		Quarterly Results Obtained																				
		Quarterly Results Published																				

Pollutant	Units of measure	Licence requirements			April						May						June					
		Monitoring frequency required when discharging	0 percentile limit	100 percentile limit	Number of results	Minimum Value	Mean Value	Median Value	Maximum Value	Exceedance (yes/no)	Number of results	Minimum Value	Mean Value	Median Value	Maximum Value	Exceedance (yes/no)	Number of results	Minimum Value	Mean Value	Median Value	Maximum Value	Exceedance (yes/no)
Biochemical Oxygen Demand	Milligrams per Litre	Weekly	-	20	0	-	-	-	-	-	0	-	-	-	-	-	0	-	-	-	-	-
Chemical Oxygen Demand	Milligrams per Litre	Weekly	-	-	0	-	-	-	-	-	0	-	-	-	-	-	0	-	-	-	-	-
Colour	Hazen	Weekly	-	-	0	-	-	-	-	-	0	-	-	-	-	-	0	-	-	-	-	-
Copper	Milligrams per Litre	Quarterly	-	0.05	0	-	-	-	-	-	0	-	-	-	-	-	0	-	-	-	-	-
Nitrogen (Ammonia)	Milligrams per Litre	Weekly	-	3.0	0	-	-	-	-	-	0	-	-	-	-	-	0	-	-	-	-	-
Nitrogen (Total)	Milligrams per Litre	Weekly	-	15	0	-	-	-	-	-	0	-	-	-	-	-	0	-	-	-	-	-
Oil and Grease	Milligrams per Litre	Weekly	-	10	0	-	-	-	-	-	0	-	-	-	-	-	0	-	-	-	-	-
pH	pH	Weekly	6.5	8.5	0	-	-	-	-	-	0	-	-	-	-	-	0	-	-	-	-	-
Phosphorus (Total)	Milligrams per Litre	Weekly	-	0.5	0	-	-	-	-	-	0	-	-	-	-	-	0	-	-	-	-	-
Total Dissolved Solids	Milligrams per Litre	Weekly	-	2000	0	-	-	-	-	-	0	-	-	-	-	-	0	-	-	-	-	-
Total Suspended Solids	Milligrams per Litre	Weekly	-	20	0	-	-	-	-	-	0	-	-	-	-	-	0	-	-	-	-	-
Zinc	Milligrams per Litre	Monthly	-	0.4	0	-	-	-	-	-	0	-	-	-	-	-	0	-	-	-	-	-
		Monthly Samples Collected																				
		Monthly Results Obtained																				
		Monthly Results Published																				
		Quarterly Samples Collected																				
		Quarterly Results Obtained																				
		Quarterly Results Published																				

Yearly Licence requirements											
Pollutant	Units of measure	Monitoring frequency required when discharging	Number of results	Minimum Value	Maximum Value	50 percentile			90 percentile		
						limit	value	Exceedance (yes/no)	limit	value	Exceedance (yes/no)
Biochemical Oxygen Demand	Milligrams per Litre	Weekly	7	2.0	6	14	3.0	no	18	5.4	no
Nitrogen (Ammonia)	Milligrams per Litre	Weekly	7	< 0.2	0	-	-	no	2.0	0.18	no
Nitrogen (Total)	Milligrams per Litre	Weekly	7	1.1	2	4	1.9	no	7	2.1	no
Phosphorus (Total)	Milligrams per Litre	Weekly	7	< 0.01	0	-	-	no	0.3	0.17	no
Total Dissolved Solids	Milligrams per Litre	Weekly	7	830.0	986	1650	950	no	-	-	-

Yearly Licence requirements						
Volume Limit	Unit of measure	Monitoring frequency required when discharging	Number of results	Volume Limit	Maximum Value	Exceedance (yes/no)

Monitoring point 2

Discharge to waters, Cooling Water quality and volume monitoring

		Licence requirements			July						August						September					
Pollutant	Units of measure	Monitoring frequency required when discharging	0 percentile limit	100 percentile limit	Number of results	Minimum Value	Mean Value	Median Value	Maximum Value	Exceedance (yes/no)	Number of results	Minimum Value	Mean Value	Median Value	Maximum Value	Exceedance (yes/no)	Number of results	Minimum Value	Mean Value	Median Value	Maximum Value	Exceedance (yes/no)
Biochemical Oxygen Demand	Milligrams per Litre	Monthly	-	-	1	-	< 2	-	-	-	1	-	< 2	-	-	-	1	-	< 2	-	-	-
Conductivity	Millisiemens per cm	Weekly	-	-	4	45	46	45	48	-	5	65	75	74	90	-	4	49	74	79	89	-
Nitrogen (Total)	Milligrams per Litre	Monthly	-	-	1	-	0	-	-	-	1	-	1	-	-	-	1	-	1	-	-	-
Oil and Grease	Milligrams per Litre	Monthly	-	5	1	-	< 5	-	-	no	1	-	< 5	-	-	no	1	-	< 5	-	-	no
pH	pH	Weekly	6.5	8.5	4	7.20	7.35	7.40	7.40	no	5	7.10	7.34	7.30	7.70	no	4	6.80	7.33	7.45	7.60	no
Phosphorus (Total)	Milligrams per Litre	Monthly	-	-	1	-	< 0.01	-	-	-	1	-	< 0.01	-	-	-	1	-	0.07	-	-	-
Total Dissolved Solids	Milligrams per Litre	Monthly	-	200	1	-	21	-	-	no	1	-	31	-	-	no	1	-	45	-	-	no
Total Suspended Solids	Milligrams per Litre	Monthly	-	-	1	-	< 2	-	-	-	1	-	< 2	-	-	-	1	-	< 2	-	-	-
Zinc	Milligrams per Litre	Monthly	-	-	1	-	< 2	-	-	-	1	-	< 2	-	-	-	1	-	< 2	-	-	-
Monthly Samples Collected					11 July 2016						1 August 2016						5 September 2016					
Monthly Results Obtained					19 July 2016						9 August 2016						13 September 2016					
Monthly Results Published					28 July 2016						9 August 2016						20 September 2016					

		Licence requirements			October						November						December					
Pollutant	Units of measure	Monitoring frequency required when discharging	0 percentile limit	100 percentile limit	Number of results	Minimum Value	Mean Value	Median Value	Maximum Value	Exceedance (yes/no)	Number of results	Minimum Value	Mean Value	Median Value	Maximum Value	Exceedance (yes/no)	Number of results	Minimum Value	Mean Value	Median Value	Maximum Value	Exceedance (yes/no)
Biochemical Oxygen Demand	Milligrams per Litre	Monthly	-	-	1	-	< 2	-	-	-	1	-	< 2	-	-	-	1	-	< 2	-	-	-
Conductivity	Millisiemens per cm	Weekly	-	-	5	94	99	97	105	-	4	95	97	96	100	-	4	95	100	98	112	-
Nitrogen (Total)	Milligrams per Litre	Monthly	-	-	1	-	0	-	-	-	1	-	1	-	-	-	1	-	0	-	-	-
Oil and Grease	Milligrams per Litre	Monthly	-	5	1	-	< 5	-	-	no	1	-	< 5	-	-	no	1	-	< 5	-	-	no
pH	pH	Weekly	6.5	8.5	5	6.80	7.32	7.43	7.49	no	4	7.58	7.63	7.62	7.69	no	4	7.30	7.54	7.54	7.76	no
Phosphorus (Total)	Milligrams per Litre	Monthly	-	-	1	-	< 0.01	-	-	-	1	-	< 0.01	-	-	-	1	-	< 0.01	-	-	-
Total Dissolved Solids	Milligrams per Litre	Monthly	-	200	1	-	53	-	-	no	1	-	59	-	-	no	1	-	64	-	-	no
Total Suspended Solids	Milligrams per Litre	Monthly	-	-	1	-	< 2	-	-	-	1	-	< 2	-	-	-	1	-	< 2	-	-	-
Zinc	Milligrams per Litre	Monthly	-	-	1	-	< 2	-	-	-	1	-	< 2	-	-	-	1	-	< 2	-	-	-
Monthly Samples Collected					10 October 2016						7 November 2016						5 December 2016					
Monthly Results Obtained					18 October 2016						17 November 2016						4 January 2017					
Monthly Results Published					4 November 2016						6 December 2016						20 January 2017					

Monitoring point 2

Discharge to waters, Cooling Water quality and volume monitoring

Pollutant	Units of measure	Licence requirements			January						February						March						
		Monitoring frequency required when discharging	0 percentile limit	100 percentile limit	Number of results	Minimum Value	Mean Value	Median Value	Maximum Value	Exceedance (yes/no)	Number of results	Minimum Value	Mean Value	Median Value	Maximum Value	Exceedance (yes/no)	Number of results	Minimum Value	Mean Value	Median Value	Maximum Value	Exceedance (yes/no)	
Biochemical Oxygen Demand	Milligrams per Litre	Monthly	-	-	1	-	< 2	-	-	-	1	-	< 2	-	-	1	-	< 2	-	-	-		
Conductivity	Millisiemens per cm	Weekly	-	-	5	114	114	114	116	-	4	116	119	119	121	-	4	102	107	107	112		
Nitrogen (Total)	Milligrams per Litre	Monthly	-	-	1	-	1	-	-	-	1	-	1	-	-	-	1	-	0	-	-		
Oil and Grease	Milligrams per Litre	Monthly	-	5	1	-	< 5	-	-	no	1	-	< 5	-	-	no	1	-	< 5	-	no		
pH	pH	Weekly	6.5	8.5	5	7.45	7.51	7.53	7.55	no	4	7.51	7.62	7.62	7.74	no	4	7.43	7.58	7.61	7.67		
Phosphorus (Total)	Milligrams per Litre	Monthly	-	-	1	-	< 0.01	-	-	-	1	-	< 0.01	-	-	-	1	-	< 0.01	-	-		
Total Dissolved Solids	Milligrams per Litre	Monthly	-	200	1	-	67	-	-	no	1	-	76	-	-	no	1	-	72	-	no		
Total Suspended Solids	Milligrams per Litre	Monthly	-	-	1	-	< 2	-	-	-	1	-	< 2	-	-	-	1	-	< 2	-	-		
Zinc	Milligrams per Litre	Monthly	-	-	1	-	< 2	-	-	-	1	-	< 2	-	-	-	1	-	< 2	-	-		
		Monthly Samples Collected				3 January 2017						6 February 2017						6 March 2017					
		Monthly Results Obtained				27 January 2017						15 February 2017						14 March 2017					
		Monthly Results Published				8 February 2017						6 March 2017						2 April 2017					

Pollutant	Units of measure	Licence requirements			April						May						June						
		Monitoring frequency required when discharging	0 percentile limit	100 percentile limit	Number of results	Minimum Value	Mean Value	Median Value	Maximum Value	Exceedance (yes/no)	Number of results	Minimum Value	Mean Value	Median Value	Maximum Value	Exceedance (yes/no)	Number of results	Minimum Value	Mean Value	Median Value	Maximum Value	Exceedance (yes/no)	
Biochemical Oxygen Demand	Milligrams per Litre	Monthly	-	-	1	-	< 2	-	-	-	1	-	< 2	-	-	-	1	-	< 2	-	-		
Conductivity	Millisiemens per cm	Weekly	-	-	4	84	88	87	96	-	5	72	78	80	82	-	4	68	76	77	80		
Nitrogen (Total)	Milligrams per Litre	Monthly	-	-	1	-	0	-	-	-	1	-	0	-	-	-	1	-	< 2	-	-		
Oil and Grease	Milligrams per Litre	Monthly	-	5	1	-	2	-	-	no	1	-	1	-	-	no	1	-	3	-	no		
pH	pH	Weekly	6.5	8.5	4	7.42	7.53	7.56	7.58	no	5	7.40	7.48	7.49	7.53	no	4	7.38	7.44	7.44	7.48		
Phosphorus (Total)	Milligrams per Litre	Monthly	-	-	1	-	< 0.01	-	-	-	1	-	< 0.01	-	-	-	1	-	< 0.01	-	-		
Total Dissolved Solids	Milligrams per Litre	Monthly	-	200	1	-	42	-	-	no	1	-	54	-	-	no	1	-	38	-	no		
Total Suspended Solids	Milligrams per Litre	Monthly	-	-	1	-	< 2	-	-	-	1	-	< 2	-	-	-	1	-	< 2	-	-		
Zinc	Milligrams per Litre	Monthly	-	-	1	-	< 2	-	-	-	1	-	< 2	-	-	-	1	-	< 2	-	-		
		Monthly Samples Collected				3 April 2017						1 May 2017						5 June 2017					
		Monthly Results Obtained				21 April 2017						16 May 2017						20 June 2017					
		Monthly Results Published				10 May 2017						2 June 2017						7 July 2017					

Yearly Licence requirements						
Volume Limit	Unit of measure	Monitoring frequency required when discharging	Number of results	Volume Limit	Maximum Value	Exceedance (yes/no)
Liquids discharged to water	kilolitres per day	Daily	365	10000	9673	no

**Monitoring point 10**
**Soil Monitoring**

See separate PDF report titled 'Soil Properties Report'

**Monitoring point 11**
**Discharge to Air, Air Emissions Monitoring**

Pollutant	Units of measure	Monitoring frequency required	Number of results	July	August	September	October	November	December	January	February	March	April	May	June
Coarse Particulates	Milligrams per cubic meter	2 times a year	2			24					36				
Fine Particulates	Milligrams per cubic meter	2 times a year	2			95					107				
Nitrogen Oxides	Milligrams per cubic meter	2 times a year	2			217					114				
Bi-annual Samples Collected						7 Sep 16					16 Feb 17				
Bi-annual Results Obtained						20 Oct 16					7 Apr 17				
Bi-annual Results Published						4 Nov 16					21 Apr 17				

**Monitoring point 13**
**Effluent quality monitoring - 4 Day Pond Outlet**

Pollutant	Units of measure	Monitoring frequency required when discharging	July	August	September	October	November	December	January	February	March	April	May	June
Biochemical Oxygen Demand	Milligrams per Litre	Monthly	3	11	6	7	5	6	6	3	5	4	4	10
Nitrogen (Total)	Milligrams per Litre	Monthly	2.2	2.0	1.6	2.3	1.9	2.0	0.0	2.6	2.9	2.3	0.1	2.0
pH	pH	Monthly	8.2	8.0	8.0	8.3	8.2	8.3	8.0	8.2	8.2	8.1	8.0	8.0
Phosphorus (Total)	Milligrams per Litre	Monthly	0.09	0.11	0.09	0.16	0.13	0.10	0.12	0.09	0.08	0.10	0.06	0.02
Total Dissolved Solids	Milligrams per Litre	Monthly	900	820	800	880	981	972	1058	1364	1081	956	936	1046
Total Suspended Solids	Milligrams per Litre	Monthly	4	5	5	11	5	6	9	6	5	0	4	6
Zinc	Milligrams per Litre	Monthly	0.00	0.02	0.00	0.01	0.01	0.02	0.02	0.02	0.04	0.00	0.01	0.01
Monthly Samples Collected			11 Jul 16	1 Aug 16	5 Sep 16	10 Oct 16	7 Nov 16	5 Dec 16	3 Jan 17	6 Feb 17	6 Mar 17	3 Apr 17	1 May 17	26 Jun 17
Monthly Results Obtained			19 Jul 16	9 Aug 16	13 Sep 16	18 Oct 16	17 Nov 16	4 Jan 17	27 Jan 17	15 Feb 17	14 Mar 17	21 Apr 17	16 May 17	6 Jul 17
Monthly Results Published			28 Jul 16	9 Aug 16	20 Sep 16	4 Nov 16	6 Dec 16	20 Jan 17	8 Feb 17	6 Mar 17	2 Apr 17	10 May 17	2 Jun 17	7 Jul 17



Monitoring points

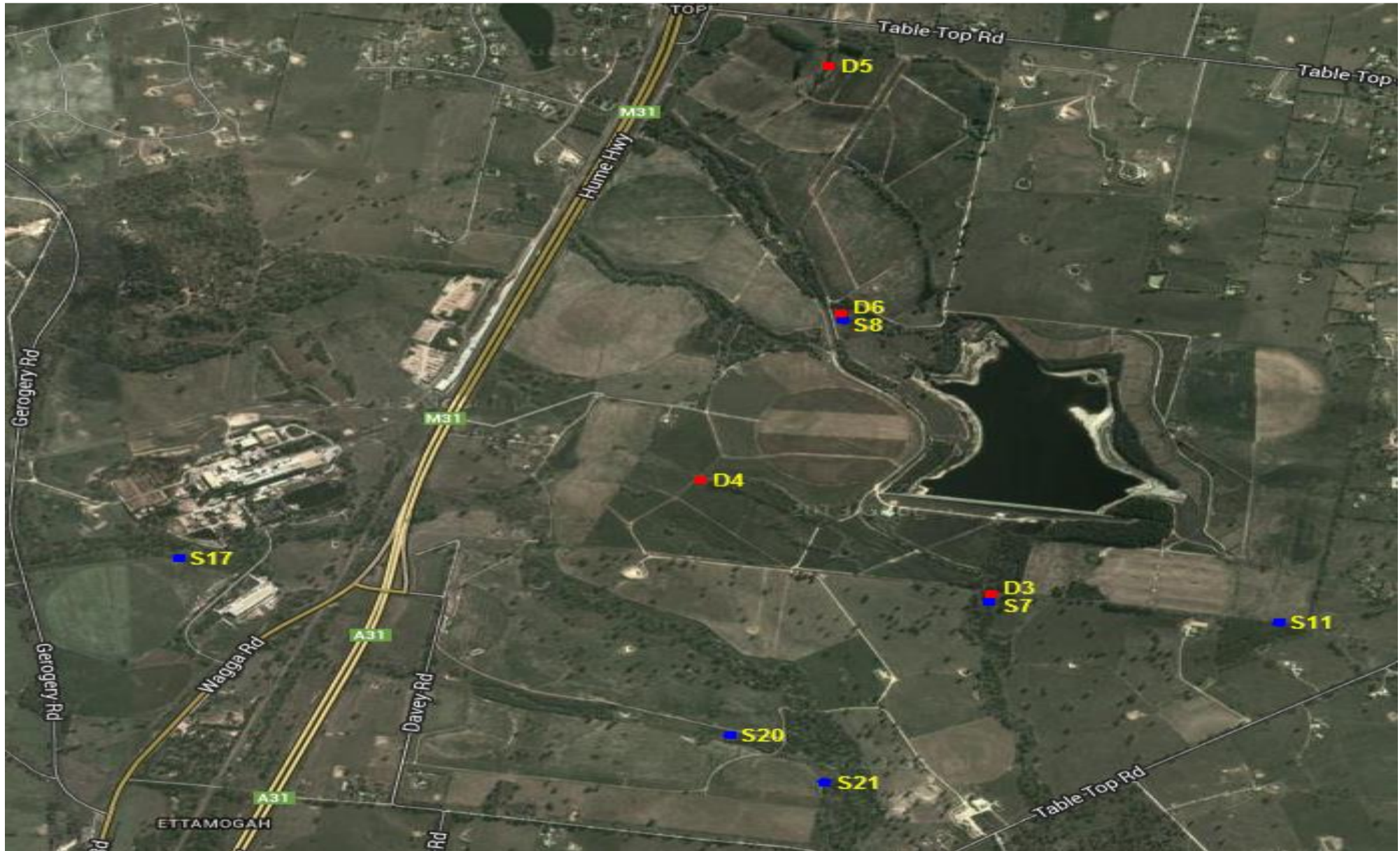
14 to 23

Groundwater quality monitoring

	Month	August			November			February			May			
		Pollutant	Standing Water Level	pH	Conductivity	Standing Water Level	pH	Conductivity	Standing Water Level	pH	Conductivity	Standing Water Level	pH	Conductivity
			Units of measure	Meters		microsiemens per centimeter	Meters		microsiemens per centimeter	Meters		microsiemens per centimeter	Meters	
Deep Bores	3	45.4	7.1	960	45.1	7.4	955	45.3	7.5	953	45.3	7.5	953	
	4	45.0	7.1	3100	Dry			Dry			Dry			
	5	44.7	7.2	6200	Dry			Dry			Dry			
	6	44.5	8.0	690	44.1	8.1	691	44.0	8.1	692	43.8	8.0	690	
Shallow Bores	7	8.4	7.6	3600	7.7	7.5	3584	8.6	7.4	3342	8.3	7.3	3669	
	8	1.5	7.0	930	1.9	7.2	801	2.2	7.0	1274	2.1	7.0	1382	
	11	7.6	7.2	7300	7.5	7.1	7167	7.2	7.0	7174	7.2	6.4	1769	
	17	4.7	6.6	280	4.1	6.6	371	5.7	6.5	459	Dry			
	20	Dry			Dry			Dry			Dry			
	21	5.5	7.1	2300	6.1	7.0	2301	6.4	7.0	2310	6.6	7.1	2310	
3 Monthly Samples Collected		30 Aug 16			16 Nov 16			15 Feb 17			17 May 17			
3 Monthly Results Obtained		07 Sep 16			29 Nov 16			22 Feb 17			26 May 17			
3 Monthly Results Published		20 Sep 16			06 Dec 16			06 Mar 17			02 Jun 17			

Pollutant	Units of measure	Deep Bores				Shallow Bores					
		3	4	5	6	7	8	11	17	20	21
Nitrate	Milligrams per Litre	0.06	0.03	7.50	0.05	34.00	2.10	0.14	9.80		6.70
Total Nitrogen	Milligrams per Litre	0.3	0.2	8.0	4.3	34.0	3.2	0.4	11.0		7.4
Total Phosphorus	Milligrams per Litre	0.17	0.05	0.06	0.06	0.09	0.10	0.07	0.07		0.07
Annual Samples Collected		30 Aug 16	30 Aug 16	30 Aug 16	30 Aug 16	30 Aug 16	30 Aug 16	30 Aug 16	30 Aug 16	Bore Dry	30 Aug 16
Annual Results Obtained		07 Sep 16	07 Sep 16	07 Sep 16	07 Sep 16	07 Sep 16	07 Sep 16	07 Sep 16	07 Sep 16		07 Sep 16
Annual Results Published		20 Sep 16	20 Sep 16	20 Sep 16	20 Sep 16	20 Sep 16	20 Sep 16	20 Sep 16	20 Sep 16		20 Sep 16

Ettamogah Site map showing Groundwater Bores



Note: Shallow Bores are denoted with blue markers and Deep Bores are denoted by red markers. The water quality of 8 and 9 mile creeks are also monitored, but are not required to be reported by EPL 1272

### Non compliance log

Pollutant	Sample dates	Detail
Monitoring Point 1 - Effluent discharge to waters	28 November	Maximum volume limit of 10,000 kilolitres per day exceeded by 377 kilolitres. Reviewed our current DCS logic to limit the maximum flow possible.

### Correction log

Sample date and time	Original data	Corrected data	Date corrected	Date originally published	Reason

### Community Complaints

Complaint	Date	Detail