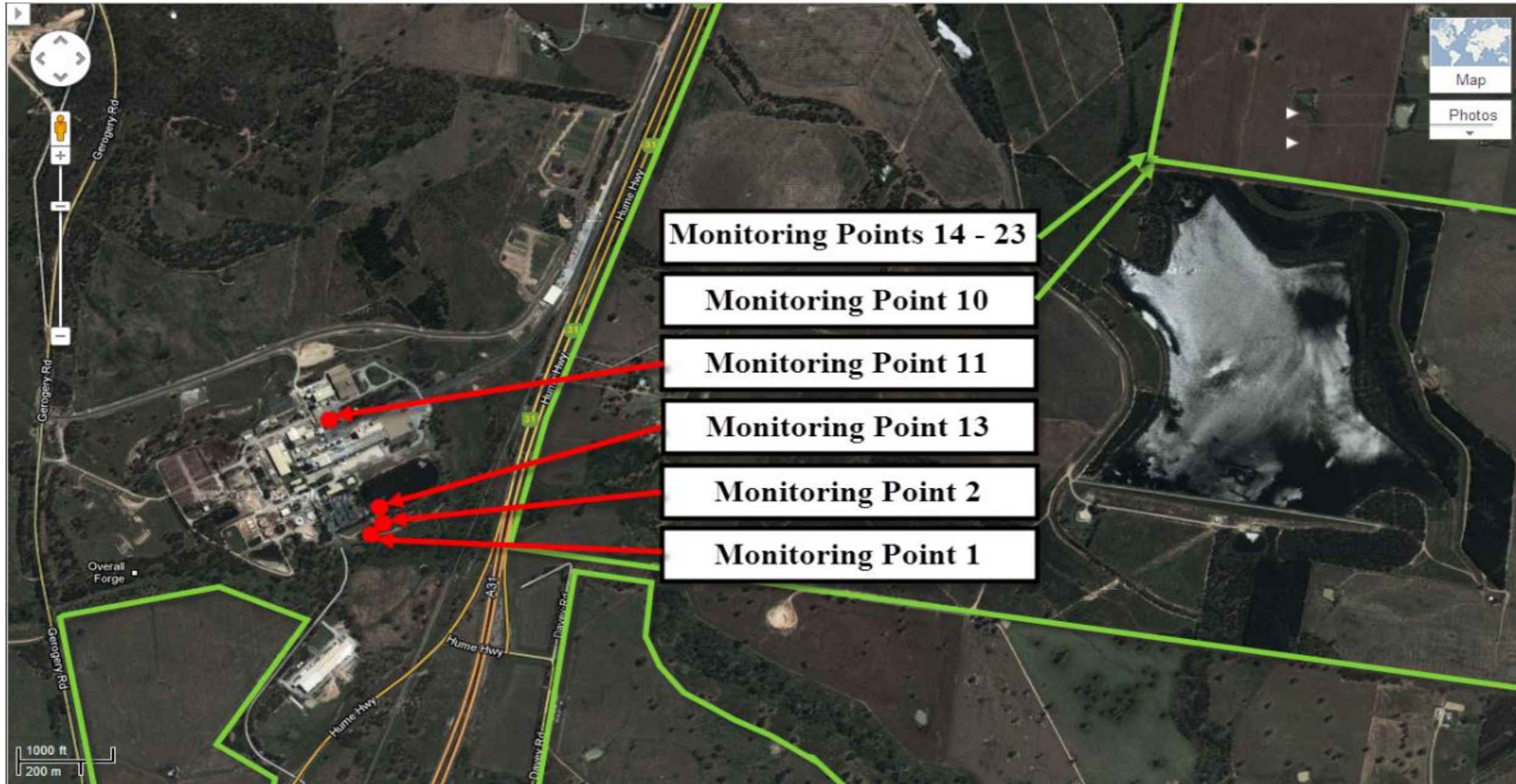


A full copy of our license can be found on the EPA website under the following address  
<http://www.epa.nsw.gov.au/prpoeoapp/ViewPOEOLicence.aspx?DOCID=32757&SYSUID=1&LICID=1272>

Result data last updated                      10 July 2018

**Map of Norske Skog Albury Paper Mills Environmental Protection Licence compliance monitoring sites**



Courtesy of Google Maps

Monitoring point

1

Discharge to waters, Effluent quality and volume monitoring

Pollutant	Units of measure	Licence requirements			July						August						September					
		Monitoring frequency required when discharging	0 percentile limit	100 percentile limit	Number of results	Minimum Value	Mean Value	Median Value	Maximum Value	Exceedance (yes/no)	Number of results	Minimum Value	Mean Value	Median Value	Maximum Value	Exceedance (yes/no)	Number of results	Minimum Value	Mean Value	Median Value	Maximum Value	Exceedance (yes/no)
Biochemical Oxygen Demand	Milligrams per Litre	Weekly	-	20	0	-	-	-	-	-	0	-	-	-	-	-	1	7	7.0	7	7	no
Chemical Oxygen Demand	Milligrams per Litre	Weekly	-	-	0	-	-	-	-	-	0	-	-	-	-	-	1	82	82	82	82	no
Colour	Hazen	Weekly	-	-	0	-	-	-	-	-	0	-	-	-	-	-	1	352	352	352	352	no
Copper	Milligrams per Litre	Quarterly	-	0.05	0	-	-	-	-	-	0	-	-	-	-	-	1	-	0.00	-	-	no
Nitrogen (Ammonia)	Milligrams per Litre	Weekly	-	3.0	0	-	-	-	-	-	0	-	-	-	-	-	1	1.3	1.30	1.3	1.3	no
Nitrogen (Total)	Milligrams per Litre	Weekly	-	15	0	-	-	-	-	-	0	-	-	-	-	-	1	6.8	6.80	6.8	6.8	no
Oil and Grease	Milligrams per Litre	Weekly	-	10	0	-	-	-	-	-	0	-	-	-	-	-	1	< 1	< 1	< 1	< 1	no
pH	pH	Weekly	6.5	8.5	0	-	-	-	-	-	0	-	-	-	-	-	1	8.2	8.15	8.2	8.2	no
Phosphorus (Total)	Milligrams per Litre	Weekly	-	0.5	0	-	-	-	-	-	0	-	-	-	-	-	1	0.45	0.45	0.45	0.45	no
Total Dissolved Solids	Milligrams per Litre	Weekly	-	2000	0	-	-	-	-	-	0	-	-	-	-	-	1	970	970	970	970	no
Total Suspended Solids	Milligrams per Litre	Weekly	-	20	0	-	-	-	-	-	0	-	-	-	-	-	1	< 2	< 2	< 2	< 2	no
Zinc	Milligrams per Litre	Monthly	-	0.4	0	-	-	-	-	-	0	-	-	-	-	-	1	-	0.10	-	-	no
Monthly Samples Collected																	25 September 2017					
Monthly Results Obtained																	11 October 2017					
Monthly Results Published																	17 October 2017					
Quarterly Samples Collected																	25 September 2017					
Quarterly Results Obtained																	11 October 2017					
Quarterly Results Published																	17 October 2017					

Pollutant	Units of measure	Licence requirements			October						November						December					
		Monitoring frequency required when discharging	0 percentile limit	100 percentile limit	Number of results	Minimum Value	Mean Value	Median Value	Maximum Value	Exceedance (yes/no)	Number of results	Minimum Value	Mean Value	Median Value	Maximum Value	Exceedance (yes/no)	Number of results	Minimum Value	Mean Value	Median Value	Maximum Value	Exceedance (yes/no)
Biochemical Oxygen Demand	Milligrams per Litre	Weekly	-	20	5	3	5.0	4	7	no	4	5	5.3	5	6	no	3	< 2	2.3	3	4	no
Chemical Oxygen Demand	Milligrams per Litre	Weekly	-	-	5	132	158	156	189	no	4	153	163	163	171	no	3	140	159	157	180	no
Colour	Hazen	Weekly	-	-	5	273	344	370	409	no	4	398	435	424	495	no	3	406	422	411	448	no
Copper	Milligrams per Litre	Quarterly	-	0.05	0	-	-	-	-	-	0	-	-	-	-	-	1	-	0.01	-	-	no
Nitrogen (Ammonia)	Milligrams per Litre	Weekly	-	3.0	5	< 0.2	0.09	0.1	0.2	no	4	< 0.2	0.09	0.1	0.2	no	3	< 0.2	< 0.2	< 0.2	< 0.2	no
Nitrogen (Total)	Milligrams per Litre	Weekly	-	15	5	1.1	1.61	1.6	2.2	no	4	0.2	0.98	1.0	1.8	no	3	0.1	1.72	1.8	3.2	no
Oil and Grease	Milligrams per Litre	Weekly	-	10	5	< 1	< 1	< 1	< 1	no	4	< 1	0.50	< 1	2.00	no	3	< 1	0.33	< 1	1.00	no
pH	pH	Weekly	6.5	8.5	5	8.1	8.18	8.2	8.2	no	4	8.2	8.19	8.2	8.2	no	3	8.2	8.23	8.2	8.3	no
Phosphorus (Total)	Milligrams per Litre	Weekly	-	0.5	5	0.07	0.10	0.10	0.12	no	4	0.07	0.09	0.09	0.10	no	3	0.06	0.07	0.07	0.08	no
Total Dissolved Solids	Milligrams per Litre	Weekly	-	2000	5	944	976	962	1044	no	4	1032	1063	1067	1084	no	3	962	981	964	1018	no
Total Suspended Solids	Milligrams per Litre	Weekly	-	20	5	< 2	< 2	< 2	< 2	no	4	< 2	< 2	< 2	< 2	no	3	< 2	2.67	< 2	8.00	no
Zinc	Milligrams per Litre	Monthly	-	0.4	1	-	0.04	-	-	no	1	-	0.00	-	-	no	1	-	0.00	-	-	no
Monthly Samples Collected					3 October 2017						27 November 2017						18 December 2017					
Monthly Results Obtained					20 October 2017						22 December 2017						17 January 2018					
Monthly Results Published					8 November 2017						8 January 2018						5 February 2018					
Quarterly Samples Collected																	18 December 2017					
Quarterly Results Obtained																	17 January 2018					
Quarterly Results Published																	5 February 2018					

Monitoring point

1

Discharge to waters, Effluent quality and volume monitoring

Pollutant	Units of measure	Licence requirements			January						February						March					
		Monitoring frequency required when discharging	0 percentile limit	100 percentile limit	Number of results	Minimum Value	Mean Value	Median Value	Maximum Value	Exceedance (yes/no)	Number of results	Minimum Value	Mean Value	Median Value	Maximum Value	Exceedance (yes/no)	Number of results	Minimum Value	Mean Value	Median Value	Maximum Value	Exceedance (yes/no)
Biochemical Oxygen Demand	Milligrams per Litre	Weekly	-	20	0	-	-	-	-	-	0	-	-	-	-	-	0	-	-	-	-	-
Chemical Oxygen Demand	Milligrams per Litre	Weekly	-	-	0	-	-	-	-	-	0	-	-	-	-	-	0	-	-	-	-	-
Colour	Hazen	Weekly	-	-	0	-	-	-	-	-	0	-	-	-	-	-	0	-	-	-	-	-
Copper	Milligrams per Litre	Quarterly	-	0.05	0	-	-	-	-	-	0	-	-	-	-	-	0	-	-	-	-	-
Nitrogen (Ammonia)	Milligrams per Litre	Weekly	-	3.0	0	-	-	-	-	-	0	-	-	-	-	-	0	-	-	-	-	-
Nitrogen (Total)	Milligrams per Litre	Weekly	-	15	0	-	-	-	-	-	0	-	-	-	-	-	0	-	-	-	-	-
Oil and Grease	Milligrams per Litre	Weekly	-	10	0	-	-	-	-	-	0	-	-	-	-	-	0	-	-	-	-	-
pH	pH	Weekly	6.5	8.5	0	-	-	-	-	-	0	-	-	-	-	-	0	-	-	-	-	-
Phosphorus (Total)	Milligrams per Litre	Weekly	-	0.5	0	-	-	-	-	-	0	-	-	-	-	-	0	-	-	-	-	-
Total Dissolved Solids	Milligrams per Litre	Weekly	-	2000	0	-	-	-	-	-	0	-	-	-	-	-	0	-	-	-	-	-
Total Suspended Solids	Milligrams per Litre	Weekly	-	20	0	-	-	-	-	-	0	-	-	-	-	-	0	-	-	-	-	-
Zinc	Milligrams per Litre	Monthly	-	0.4	0	-	-	-	-	-	0	-	-	-	-	-	0	-	-	-	-	-
		Monthly Samples Collected																				
		Monthly Results Obtained																				
		Monthly Results Published																				
		Quarterly Samples Collected																				
		Quarterly Results Obtained																				
		Quarterly Results Published																				

Pollutant	Units of measure	Licence requirements			April						May						June					
		Monitoring frequency required when discharging	0 percentile limit	100 percentile limit	Number of results	Minimum Value	Mean Value	Median Value	Maximum Value	Exceedance (yes/no)	Number of results	Minimum Value	Mean Value	Median Value	Maximum Value	Exceedance (yes/no)	Number of results	Minimum Value	Mean Value	Median Value	Maximum Value	Exceedance (yes/no)
Biochemical Oxygen Demand	Milligrams per Litre	Weekly	-	20	0	-	-	-	-	-	0	-	-	-	-	-	0	-	-	-	-	-
Chemical Oxygen Demand	Milligrams per Litre	Weekly	-	-	0	-	-	-	-	-	0	-	-	-	-	-	0	-	-	-	-	-
Colour	Hazen	Weekly	-	-	0	-	-	-	-	-	0	-	-	-	-	-	0	-	-	-	-	-
Copper	Milligrams per Litre	Quarterly	-	0.05	0	-	-	-	-	-	0	-	-	-	-	-	0	-	-	-	-	-
Nitrogen (Ammonia)	Milligrams per Litre	Weekly	-	3.0	0	-	-	-	-	-	0	-	-	-	-	-	0	-	-	-	-	-
Nitrogen (Total)	Milligrams per Litre	Weekly	-	15	0	-	-	-	-	-	0	-	-	-	-	-	0	-	-	-	-	-
Oil and Grease	Milligrams per Litre	Weekly	-	10	0	-	-	-	-	-	0	-	-	-	-	-	0	-	-	-	-	-
pH	pH	Weekly	6.5	8.5	0	-	-	-	-	-	0	-	-	-	-	-	0	-	-	-	-	-
Phosphorus (Total)	Milligrams per Litre	Weekly	-	0.5	0	-	-	-	-	-	0	-	-	-	-	-	0	-	-	-	-	-
Total Dissolved Solids	Milligrams per Litre	Weekly	-	2000	0	-	-	-	-	-	0	-	-	-	-	-	0	-	-	-	-	-
Total Suspended Solids	Milligrams per Litre	Weekly	-	20	0	-	-	-	-	-	0	-	-	-	-	-	0	-	-	-	-	-
Zinc	Milligrams per Litre	Monthly	-	0.4	0	-	-	-	-	-	0	-	-	-	-	-	0	-	-	-	-	-
		Monthly Samples Collected																				
		Monthly Results Obtained																				
		Monthly Results Published																				
		Quarterly Samples Collected																				
		Quarterly Results Obtained																				
		Quarterly Results Published																				

Pollutant	Units of measure	Monitoring frequency required when discharging	Yearly Licence requirements								
			Number of results	Minimum Value	Maximum Value	50 percentile limit	50 percentile value	Exceedance (yes/no)	90 percentile limit	90 percentile value	Exceedance (yes/no)
Biochemical Oxygen Demand	Milligrams per Litre	Weekly	13	< 2	7	14	5.0	no	18	7.0	no
Nitrogen (Ammonia)	Milligrams per Litre	Weekly	13	< 0.2	1	-	-	no	2.0	0.22	no
Nitrogen (Total)	Milligrams per Litre	Weekly	13	0.1	7	4	1.6	no	7	3.0	no
Phosphorus (Total)	Milligrams per Litre	Weekly	13	0.1	0	-	-	no	0.3	0.12	no
Total Dissolved Solids	Milligrams per Litre	Weekly	13	944.0	1084	1650	970	no	-	-	-

Volume Monitoring	Unit of measure	Monitoring frequency required when discharging	Average Value
Liquids discharged to water	kilolitres per day	Continuous	1996

Volume Limit	Unit of measure	Yearly Licence requirements				
		Monitoring frequency required when discharging	Number of results	Volume Limit	Maximum Value	Exceedance (yes/no)
Liquids discharged to water	kilolitres per day	Daily	91	10000	10300	yes

Monitoring point 2

Discharge to waters, Cooling Water quality and volume monitoring

		Licence requirements			July						August						September					
Pollutant	Units of measure	Monitoring frequency required when discharging	0 percentile limit	100 percentile limit	Number of results	Minimum Value	Mean Value	Median Value	Maximum Value	Exceedance (yes/no)	Number of results	Minimum Value	Mean Value	Median Value	Maximum Value	Exceedance (yes/no)	Number of results	Minimum Value	Mean Value	Median Value	Maximum Value	Exceedance (yes/no)
Biochemical Oxygen Demand	Milligrams per Litre	Monthly	-	-	1	-	< 2	-	-	-	1	-	< 2	-	-	-	1	-	< 2	-	-	-
Conductivity	Millisiemens per cm	Weekly	-	-	5	67	74	73	78	-	4	76	78	77	81	-	4	78	83	83	86	-
Nitrogen (Total)	Milligrams per Litre	Monthly	-	-	1	-	0	-	-	-	1	-	0	-	-	-	1	-	< 2	-	-	-
Oil and Grease	Milligrams per Litre	Monthly	-	5	1	-	< 5	-	-	no	1	-	6	-	-	yes	1	-	< 5	-	-	no
pH	pH	Weekly	6.5	8.5	5	7.39	7.43	7.43	7.46	no	4	7.39	7.43	7.40	7.53	no	4	7.38	7.48	7.50	7.53	no
Phosphorus (Total)	Milligrams per Litre	Monthly	-	-	1	-	< 0.01	-	-	-	1	-	< 0.01	-	-	-	1	-	< 0.01	-	-	-
Total Dissolved Solids	Milligrams per Litre	Monthly	-	200	1	-	44	-	-	no	1	-	34	-	-	no	1	-	30	-	-	no
Total Suspended Solids	Milligrams per Litre	Monthly	-	-	1	-	< 2	-	-	-	1	-	< 2	-	-	-	1	-	< 2	-	-	-
Zinc	Milligrams per Litre	Monthly	-	-	1	-	0	-	-	-	1	-	< 2	-	-	-	1	-	< 2	-	-	-
Monthly Samples Collected					3 July 2017						7 August 2017						4 September 2017					
Monthly Results Obtained					11 July 2017						29 August 2017						20 September 2017					
Monthly Results Published					28 July 2017						14 September 2017						3 October 2017					

		Licence requirements			October						November						December					
Pollutant	Units of measure	Monitoring frequency required when discharging	0 percentile limit	100 percentile limit	Number of results	Minimum Value	Mean Value	Median Value	Maximum Value	Exceedance (yes/no)	Number of results	Minimum Value	Mean Value	Median Value	Maximum Value	Exceedance (yes/no)	Number of results	Minimum Value	Mean Value	Median Value	Maximum Value	Exceedance (yes/no)
Biochemical Oxygen Demand	Milligrams per Litre	Monthly	-	-	1	-	< 2	-	-	-	1	-	< 2	-	-	-	1	-	< 2	-	-	-
Conductivity	Millisiemens per cm	Weekly	-	-	5	71	78	77	85	-	4	69	72	72	73	-	4	74	82	76	105	-
Nitrogen (Total)	Milligrams per Litre	Monthly	-	-	1	-	< 2	-	-	-	1	-	0	-	-	-	1	-	0	-	-	-
Oil and Grease	Milligrams per Litre	Monthly	-	5	1	-	< 5	-	-	no	1	-	< 5	-	-	no	1	-	< 5	-	-	no
pH	pH	Weekly	6.5	8.5	5	7.30	7.41	7.44	7.49	no	4	7.22	7.34	7.33	7.48	no	4	7.14	7.31	7.36	7.37	no
Phosphorus (Total)	Milligrams per Litre	Monthly	-	-	1	-	< 0.01	-	-	-	1	-	< 0.01	-	-	-	1	-	< 0.01	-	-	-
Total Dissolved Solids	Milligrams per Litre	Monthly	-	200	1	-	51	-	-	no	1	-	36	-	-	no	1	-	28	-	-	no
Total Suspended Solids	Milligrams per Litre	Monthly	-	-	1	-	< 2	-	-	-	1	-	< 2	-	-	-	1	-	< 2	-	-	-
Zinc	Milligrams per Litre	Monthly	-	-	1	-	< 2	-	-	-	1	-	< 2	-	-	-	1	-	< 2	-	-	-
Monthly Samples Collected					3 October 2017						6 November 2017						4 December 2017					
Monthly Results Obtained					20 October 2017						17 November 2017						14 December 2017					
Monthly Results Published					8 November 2017						27 November 2017						8 January 2018					

Monitoring point 2

Discharge to waters, Cooling Water quality and volume monitoring

Pollutant	Units of measure	Licence requirements			January						February						March						
		Monitoring frequency required when discharging	0 percentile limit	100 percentile limit	Number of results	Minimum Value	Mean Value	Median Value	Maximum Value	Exceedance (yes/no)	Number of results	Minimum Value	Mean Value	Median Value	Maximum Value	Exceedance (yes/no)	Number of results	Minimum Value	Mean Value	Median Value	Maximum Value	Exceedance (yes/no)	
Biochemical Oxygen Demand	Milligrams per Litre	Monthly	-	-	1	-	< 2	-	-	-	1	-	< 2	-	-	1	-	< 2	-	-	-		
Conductivity	Millisiemens per cm	Weekly	-	-	5	75	82	82	87	-	4	85	89	88	96	-	4	79	85	84	92		
Nitrogen (Total)	Milligrams per Litre	Monthly	-	-	1	-	0	-	-	-	1	-	0	-	-	-	1	-	0	-	-		
Oil and Grease	Milligrams per Litre	Monthly	-	5	1	-	< 5	-	-	no	1	-	< 5	-	-	no	1	-	1	-	no		
pH	pH	Weekly	6.5	8.5	5	7.01	7.18	7.15	7.45	no	4	7.33	7.45	7.46	7.56	no	4	7.30	7.45	7.45	7.62		
Phosphorus (Total)	Milligrams per Litre	Monthly	-	-	1	-	< 0.01	-	-	-	1	-	< 0.01	-	-	-	1	-	0	-	-		
Total Dissolved Solids	Milligrams per Litre	Monthly	-	200	1	-	36	-	-	no	1	-	41	-	-	no	1	-	41	-	-		
Total Suspended Solids	Milligrams per Litre	Monthly	-	-	1	-	< 2	-	-	-	1	-	< 2	-	-	-	1	-	< 2	-	-		
Zinc	Milligrams per Litre	Monthly	-	-	1	-	< 2	-	-	-	1	-	< 2	-	-	-	1	-	< 2	-	-		
		Monthly Samples Collected				2 January 2018						5 February 2018						5 March 2018					
		Monthly Results Obtained				24 January 2018						22 February 2018						26 March 2018					
		Monthly Results Published				5 February 2018						23 February 2018						27 March 2018					

Pollutant	Units of measure	Licence requirements			April						May						June						
		Monitoring frequency required when discharging	0 percentile limit	100 percentile limit	Number of results	Minimum Value	Mean Value	Median Value	Maximum Value	Exceedance (yes/no)	Number of results	Minimum Value	Mean Value	Median Value	Maximum Value	Exceedance (yes/no)	Number of results	Minimum Value	Mean Value	Median Value	Maximum Value	Exceedance (yes/no)	
Biochemical Oxygen Demand	Milligrams per Litre	Monthly	-	-	1	-	< 2	-	-	-	1	-	< 2	-	-	1	-	< 2	-	-	-		
Conductivity	Millisiemens per cm	Weekly	-	-	5	74	78	78	81	-	4	77	78	79	79	-	4	73	80	82	84		
Nitrogen (Total)	Milligrams per Litre	Monthly	-	-	1	-	0	-	-	-	1	-	0	-	-	-	1	-	0	-	-		
Oil and Grease	Milligrams per Litre	Monthly	-	5	1	-	< 5	-	-	no	1	-	2	-	-	no	1	-	< 5	-	no		
pH	pH	Weekly	6.5	8.5	5	7.46	7.50	7.48	7.55	no	4	7.38	7.47	7.45	7.62	no	4	7.27	7.42	7.43	7.55		
Phosphorus (Total)	Milligrams per Litre	Monthly	-	-	1	-	< 0.01	-	-	-	1	-	< 0.01	-	-	-	1	-	0	-	-		
Total Dissolved Solids	Milligrams per Litre	Monthly	-	200	1	-	34	-	-	no	1	-	47	-	-	no	1	-	39	-	-		
Total Suspended Solids	Milligrams per Litre	Monthly	-	-	1	-	< 2	-	-	-	1	-	< 2	-	-	-	1	-	< 2	-	-		
Zinc	Milligrams per Litre	Monthly	-	-	1	-	< 2	-	-	-	1	-	0	-	-	-	1	-	< 2	-	-		
		Monthly Samples Collected				2 April 2018						7 May 2018						4 June 2018					
		Monthly Results Obtained				26 April 2018						24 May 2018						26 June 2018					
		Monthly Results Published				8 May 2018						12 June 2018						10 July 2018					

Volume Monitoring	Unit of measure	Monitoring frequency required when discharging	Average Value
Liquids discharged to water	kilolitres per day	Continuous	1723

Yearly Licence requirements						
Volume Limit	Unit of measure	Monitoring frequency required when discharging	Number of results	Volume Limit	Maximum Value	Exceedance (yes/no)
Liquids discharged to water	kilolitres per day	Daily	365	10000	7538	no

**Monitoring Point 7**
**Maryvale effluent reuse system volume monitoring**

Volume Monitoring	Unit of measure	Monitoring frequency required	Average Value	Maximum Value
Maryvale Effluent Storage Dam	kilolitres per day	Continuous	6027	13398

**Monitoring point 10**
**Soil Monitoring**

See separate PDF report titled 'Soil Properties Report'

**Monitoring point 11**
**Discharge to Air, Air Emissions Monitoring**

Pollutant	Units of measure	Monitoring frequency required	Number of results	July	August	September	October	November	December	January	February	March	April	May	June
Coarse Particulates	Milligrams per cubic meter	2 times a year	2			31							42		
Fine Particulates	Milligrams per cubic meter	2 times a year	2			56							109		
Nitrogen Oxides	Milligrams per cubic meter	2 times a year	2			191							237		
Bi-annual Samples Collected						14 Sep 17							18 Apr 18		
Bi-annual Results Obtained						9 Oct 17							24 May 18		
Bi-annual Results Published						17 Oct 17							12 Jun 18		

**Monitoring point 13**
**Effluent quality monitoring - 4 Day Pond Outlet**

Pollutant	Units of measure	Monitoring frequency required when discharging	July	August	September	October	November	December	January	February	March	April	May	June
Biochemical Oxygen Demand	Milligrams per Litre	Monthly	10	6	5	4	5	5	7	5	4	2	7	0
Nitrogen (Total)	Milligrams per Litre	Monthly	1.8	4.8	3.0	2.0	2.0	2.1	3.0	0.1	3.2	2.1	3.1	7.4
pH	pH	Monthly	8.1	8.0	8.1	8.1	8.0	8.1	8.1	8.1	8.1	8.0	7.9	8.0
Phosphorus (Total)	Milligrams per Litre	Monthly	0.11	0.22	0.09	0.10	0.10	0.12	0.10	0.18	0.14	0.14	0.18	0.10
Total Dissolved Solids	Milligrams per Litre	Monthly	1044	943	998	942	1093	969	1218	1116	1144	1140	1088	772
Total Suspended Solids	Milligrams per Litre	Monthly	10	8	7	0	5	7	3	20	3	0	40	0
Zinc	Milligrams per Litre	Monthly	0.01	0.01	0.04	0.00	0.02	0.06	0.00	0.00	0.01	0.00	0.02	0.04
Monthly Samples Collected			3 Jul 17	7 Aug 17	4 Sep 17	3 Oct 17	6 Nov 17	4 Dec 17	2 Jan 18	5 Feb 18	5 Mar 18	2 Apr 18	7 May 18	4 Jun 18
Monthly Results Obtained			11 Jul 17	29 Aug 17	20 Sep 17	20 Oct 17	17 Nov 17	14 Dec 17	24 Jan 18	22 Feb 18	26 Mar 18	26 Apr 18	24 May 18	26 Jun 18
Monthly Results Published			28 Jul 17	14 Sep 17	3 Oct 17	8 Nov 17	27 Nov 17	8 Jan 18	5 Feb 18	23 Feb 18	27 Mar 18	8 May 18	12 Jun 18	10 Jul 18

Monitoring points

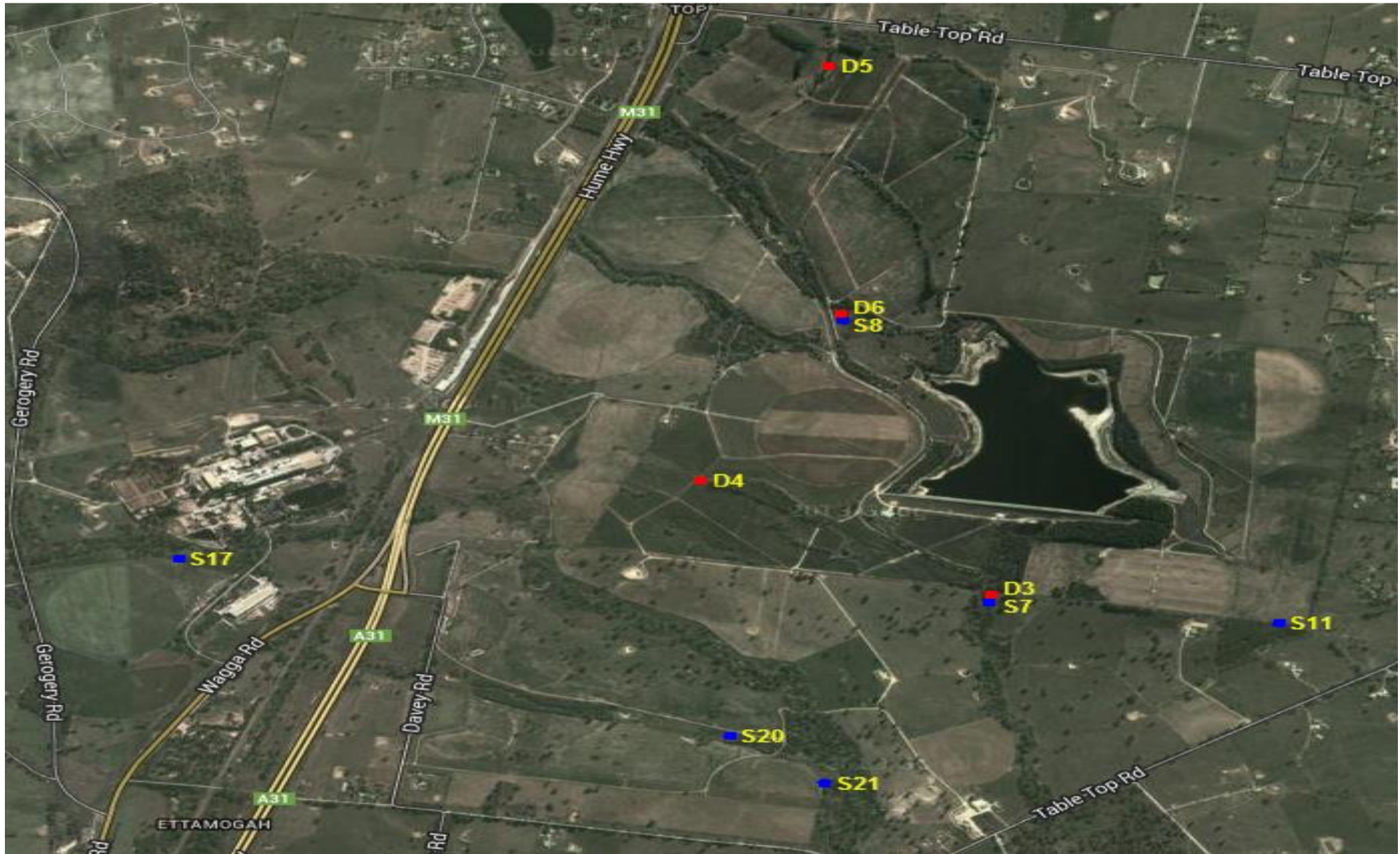
14 to 23

Groundwater quality monitoring

	Month	August			November			February			May			
		Pollutant	Standing Water Level	pH	Conductivity	Standing Water Level	pH	Conductivity	Standing Water Level	pH	Conductivity	Standing Water Level	pH	Conductivity
			Units of measure	Meters		microsiemens per centimeter	Meters		microsiemens per centimeter	Meters		microsiemens per centimeter	Meters	
Deep Bores	3	45.3	7.3	958	45.3	7.5	956	45.3	7.1	934	45.3	7.4	909	
	4	44.8	7.2	1704	44.7	7.1	2058	44.7	7.0	2485	44.7	7.3	2681	
	5	44.7	7.0	3834	44.7	6.8	4105	45.2	6.7	4226	44.7	6.9	4268	
	6	43.6	8.1	691	43.6	8.0	688	43.5	7.0	777	43.5	8.0	686	
Shallow Bores	7	8.7	7.5	3281	9.0	7.3	3574	9.3	7.2	3865	9.7	7.1	2262	
	8	1.9	7.1	1359	2.0	7.0	1112	1.8	7.0	777	2.8	7.0	1376	
	11	2.9	7.1	7234	6.9	7.0	7158	3.1	7.0	7048	7.2	7.2	6848	
	17	5.1	6.6	402	5.5	6.7	471	Dry			Dry			
	20	Dry			Dry			Dry			Dry			
21	6.8	7.3	2269	6.9	7.2	2301	7.0	7.1	2292	7.5	7.1	2262		
3 Monthly Samples Collected		04 Oct 17			22 Nov 17			22 Feb 18			20 Jun 18			
3 Monthly Results Obtained		13 Oct 17			14 Dec 17			08 Mar 18			10 Jul 18			
3 Monthly Results Published		17 Oct 17			08 Jan 18			27 Mar 18			10 Jul 18			

Pollutant	Units of measure	Deep Bores				Shallow Bores					
		3	4	5	6	7	8	11	17	20	21
Nitrate	Milligrams per Litre	0.18	1.00	3.80	0.02	29.00	0.13	0.06	12.00		7.20
Total Nitrogen	Milligrams per Litre	0.7	4.7	4.4	3.8	29.9	1.5	0.5	14.0		7.9
Total Phosphorus	Milligrams per Litre	0.19	0.26	0.00	0.00	0.12	0.18	0.07	0.00		0.09
Annual Samples Collected		04 Oct 17	04 Oct 17	04 Oct 17	04 Oct 17	04 Oct 17	04 Oct 17	04 Oct 17	04 Oct 17	Bore Dry	04 Oct 17
Annual Results Obtained		13 Oct 17	13 Oct 17	13 Oct 17	13 Oct 17	13 Oct 17	13 Oct 17	13 Oct 17	13 Oct 17		13 Oct 17
Annual Results Published		17 Oct 17	17 Oct 17	17 Oct 17	17 Oct 17	17 Oct 17	17 Oct 17	17 Oct 17	17 Oct 17		17 Oct 17

Ettamogah Site map showing Groundwater Bores



Note: Shallow Bores are denoted with blue markers and Deep Bores are denoted by red markers. The water quality of 8 and 9 mile creeks are also monitored, but are not required to be reported by EPL 1272

### Non compliance log

Pollutant	Sample dates	Detail
Oil and Grease at Monitoring Point 2	07 August	Exceeded 100 percentile limit (6 mg/L). Cooling water flow less than 0.5 L/s. Resample taken 30 August was 0 mg/L, so it is possible it was a non-representative sample.
Monitoring Point 1 - Effluent discharge to waters	23 and 24 September	Maximum volume limit of 10,000 kilolitres per day exceeded by 296 and 199 kilolitres respectively. Reviewed our current DCS logic to limit the maximum flow possible.

### Correction log

Sample date and time	Original data	Corrected data	Date corrected	Date originally published	Reason

### Community Complaints

Complaint	Date	Detail
Odour	08 May	A sulphide smell was noticeable to a neighbour. Peroxide dosing was increased in the WWTP