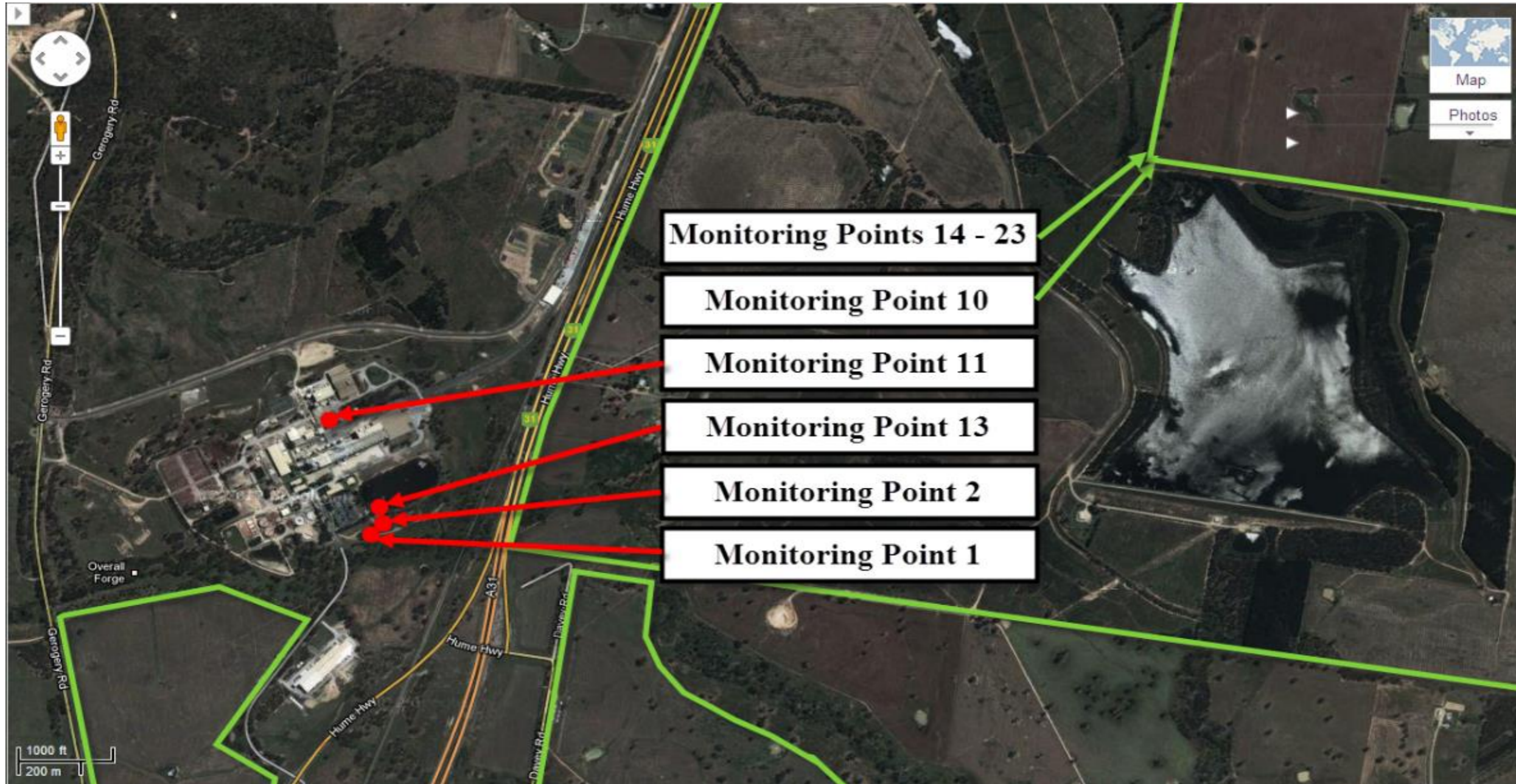


A full copy of our license can be found on the EPA website under the following address
<http://www.epa.nsw.gov.au/prpoeoapp/ViewPOEOLicence.aspx?DOCID=32757&SYSUID=1&LICID=1272>

Result data last updated 2 August 2018

Map of Norske Skog Albury Paper Mills Environmental Protection Licence compliance monitoring sites



Courtesy of Google Maps

Monitoring point 1

Discharge to waters, Effluent quality and volume monitoring

Pollutant	Units of measure	Licence requirements			July						August						September					
		Monitoring frequency required when discharging	0 percentile limit	100 percentile limit	Number of results	Minimum Value	Mean Value	Median Value	Maximum Value	Exceedance (yes/no)	Number of results	Minimum Value	Mean Value	Median Value	Maximum Value	Exceedance (yes/no)	Number of results	Minimum Value	Mean Value	Median Value	Maximum Value	Exceedance (yes/no)
Biochemical Oxygen Demand	Milligrams per Litre	Weekly	-	20	0	-	-	-	-	-	0	-	-	-	-	-	0	-	-	-	-	-
Chemical Oxygen Demand	Milligrams per Litre	Weekly	-	-	0	-	-	-	-	-	0	-	-	-	-	-	0	-	-	-	-	-
Colour	Hazen	Weekly	-	-	0	-	-	-	-	-	0	-	-	-	-	-	0	-	-	-	-	-
Copper	Milligrams per Litre	Quarterly	-	0.05	0	-	-	-	-	-	0	-	-	-	-	-	0	-	-	-	-	-
Nitrogen (Ammonia)	Milligrams per Litre	Weekly	-	3.0	0	-	-	-	-	-	0	-	-	-	-	-	0	-	-	-	-	-
Nitrogen (Total)	Milligrams per Litre	Weekly	-	15	0	-	-	-	-	-	0	-	-	-	-	-	0	-	-	-	-	-
Oil and Grease	Milligrams per Litre	Weekly	-	10	0	-	-	-	-	-	0	-	-	-	-	-	0	-	-	-	-	-
pH	pH	Weekly	6.5	8.5	0	-	-	-	-	-	0	-	-	-	-	-	0	-	-	-	-	-
Phosphorus (Total)	Milligrams per Litre	Weekly	-	0.5	0	-	-	-	-	-	0	-	-	-	-	-	0	-	-	-	-	-
Total Dissolved Solids	Milligrams per Litre	Weekly	-	2000	0	-	-	-	-	-	0	-	-	-	-	-	0	-	-	-	-	-
Total Suspended Solids	Milligrams per Litre	Weekly	-	20	0	-	-	-	-	-	0	-	-	-	-	-	0	-	-	-	-	-
Zinc	Milligrams per Litre	Monthly	-	0.4	0	-	-	-	-	-	0	-	-	-	-	-	0	-	-	-	-	-
		Monthly Samples Collected																				
		Monthly Results Obtained																				
		Monthly Results Published																				
		Quarterly Samples Collected																				
		Quarterly Results Obtained																				
		Quarterly Results Published																				

Pollutant	Units of measure	Licence requirements			October						November						December					
		Monitoring frequency required when discharging	0 percentile limit	100 percentile limit	Number of results	Minimum Value	Mean Value	Median Value	Maximum Value	Exceedance (yes/no)	Number of results	Minimum Value	Mean Value	Median Value	Maximum Value	Exceedance (yes/no)	Number of results	Minimum Value	Mean Value	Median Value	Maximum Value	Exceedance (yes/no)
Biochemical Oxygen Demand	Milligrams per Litre	Weekly	-	20	0	-	-	-	-	-	0	-	-	-	-	-	0	-	-	-	-	-
Chemical Oxygen Demand	Milligrams per Litre	Weekly	-	-	0	-	-	-	-	-	0	-	-	-	-	-	0	-	-	-	-	-
Colour	Hazen	Weekly	-	-	0	-	-	-	-	-	0	-	-	-	-	-	0	-	-	-	-	-
Copper	Milligrams per Litre	Quarterly	-	0.05	0	-	-	-	-	-	0	-	-	-	-	-	0	-	-	-	-	-
Nitrogen (Ammonia)	Milligrams per Litre	Weekly	-	3.0	0	-	-	-	-	-	0	-	-	-	-	-	0	-	-	-	-	-
Nitrogen (Total)	Milligrams per Litre	Weekly	-	15	0	-	-	-	-	-	0	-	-	-	-	-	0	-	-	-	-	-
Oil and Grease	Milligrams per Litre	Weekly	-	10	0	-	-	-	-	-	0	-	-	-	-	-	0	-	-	-	-	-
pH	pH	Weekly	6.5	8.5	0	-	-	-	-	-	0	-	-	-	-	-	0	-	-	-	-	-
Phosphorus (Total)	Milligrams per Litre	Weekly	-	0.5	0	-	-	-	-	-	0	-	-	-	-	-	0	-	-	-	-	-
Total Dissolved Solids	Milligrams per Litre	Weekly	-	2000	0	-	-	-	-	-	0	-	-	-	-	-	0	-	-	-	-	-
Total Suspended Solids	Milligrams per Litre	Weekly	-	20	0	-	-	-	-	-	0	-	-	-	-	-	0	-	-	-	-	-
Zinc	Milligrams per Litre	Monthly	-	0.4	0	-	-	-	-	-	0	-	-	-	-	-	0	-	-	-	-	-
		Monthly Samples Collected																				
		Monthly Results Obtained																				
		Monthly Results Published																				
		Quarterly Samples Collected																				
		Quarterly Results Obtained																				
		Quarterly Results Published																				

Monitoring point

1

Discharge to waters, Effluent quality and volume monitoring

Pollutant	Units of measure	Licence requirements			January						February						March					
		Monitoring frequency required when discharging	0 percentile limit	100 percentile limit	Number of results	Minimum Value	Mean Value	Median Value	Maximum Value	Exceedance (yes/no)	Number of results	Minimum Value	Mean Value	Median Value	Maximum Value	Exceedance (yes/no)	Number of results	Minimum Value	Mean Value	Median Value	Maximum Value	Exceedance (yes/no)
Biochemical Oxygen Demand	Milligrams per Litre	Weekly	-	20	0	-	-	-	-	-	0	-	-	-	-	-	0	-	-	-	-	-
Chemical Oxygen Demand	Milligrams per Litre	Weekly	-	-	0	-	-	-	-	-	0	-	-	-	-	-	0	-	-	-	-	-
Colour	Hazen	Weekly	-	-	0	-	-	-	-	-	0	-	-	-	-	-	0	-	-	-	-	-
Copper	Milligrams per Litre	Quarterly	-	0.05	0	-	-	-	-	-	0	-	-	-	-	-	0	-	-	-	-	-
Nitrogen (Ammonia)	Milligrams per Litre	Weekly	-	3.0	0	-	-	-	-	-	0	-	-	-	-	-	0	-	-	-	-	-
Nitrogen (Total)	Milligrams per Litre	Weekly	-	15	0	-	-	-	-	-	0	-	-	-	-	-	0	-	-	-	-	-
Oil and Grease	Milligrams per Litre	Weekly	-	10	0	-	-	-	-	-	0	-	-	-	-	-	0	-	-	-	-	-
pH	pH	Weekly	6.5	8.5	0	-	-	-	-	-	0	-	-	-	-	-	0	-	-	-	-	-
Phosphorus (Total)	Milligrams per Litre	Weekly	-	0.5	0	-	-	-	-	-	0	-	-	-	-	-	0	-	-	-	-	-
Total Dissolved Solids	Milligrams per Litre	Weekly	-	2000	0	-	-	-	-	-	0	-	-	-	-	-	0	-	-	-	-	-
Total Suspended Solids	Milligrams per Litre	Weekly	-	20	0	-	-	-	-	-	0	-	-	-	-	-	0	-	-	-	-	-
Zinc	Milligrams per Litre	Monthly	-	0.4	0	-	-	-	-	-	0	-	-	-	-	-	0	-	-	-	-	-
		Monthly Samples Collected																				
		Monthly Results Obtained																				
		Monthly Results Published																				
		Quarterly Samples Collected																				
		Quarterly Results Obtained																				
		Quarterly Results Published																				

Pollutant	Units of measure	Licence requirements			April						May						June					
		Monitoring frequency required when discharging	0 percentile limit	100 percentile limit	Number of results	Minimum Value	Mean Value	Median Value	Maximum Value	Exceedance (yes/no)	Number of results	Minimum Value	Mean Value	Median Value	Maximum Value	Exceedance (yes/no)	Number of results	Minimum Value	Mean Value	Median Value	Maximum Value	Exceedance (yes/no)
Biochemical Oxygen Demand	Milligrams per Litre	Weekly	-	20	0	-	-	-	-	-	0	-	-	-	-	-	0	-	-	-	-	-
Chemical Oxygen Demand	Milligrams per Litre	Weekly	-	-	0	-	-	-	-	-	0	-	-	-	-	-	0	-	-	-	-	-
Colour	Hazen	Weekly	-	-	0	-	-	-	-	-	0	-	-	-	-	-	0	-	-	-	-	-
Copper	Milligrams per Litre	Quarterly	-	0.05	0	-	-	-	-	-	0	-	-	-	-	-	0	-	-	-	-	-
Nitrogen (Ammonia)	Milligrams per Litre	Weekly	-	3.0	0	-	-	-	-	-	0	-	-	-	-	-	0	-	-	-	-	-
Nitrogen (Total)	Milligrams per Litre	Weekly	-	15	0	-	-	-	-	-	0	-	-	-	-	-	0	-	-	-	-	-
Oil and Grease	Milligrams per Litre	Weekly	-	10	0	-	-	-	-	-	0	-	-	-	-	-	0	-	-	-	-	-
pH	pH	Weekly	6.5	8.5	0	-	-	-	-	-	0	-	-	-	-	-	0	-	-	-	-	-
Phosphorus (Total)	Milligrams per Litre	Weekly	-	0.5	0	-	-	-	-	-	0	-	-	-	-	-	0	-	-	-	-	-
Total Dissolved Solids	Milligrams per Litre	Weekly	-	2000	0	-	-	-	-	-	0	-	-	-	-	-	0	-	-	-	-	-
Total Suspended Solids	Milligrams per Litre	Weekly	-	20	0	-	-	-	-	-	0	-	-	-	-	-	0	-	-	-	-	-
Zinc	Milligrams per Litre	Monthly	-	0.4	0	-	-	-	-	-	0	-	-	-	-	-	0	-	-	-	-	-
		Monthly Samples Collected																				
		Monthly Results Obtained																				
		Monthly Results Published																				
		Quarterly Samples Collected																				
		Quarterly Results Obtained																				
		Quarterly Results Published																				

Pollutant	Units of measure	Monitoring frequency required when discharging	Yearly Licence requirements								
			Number of results	Minimum Value	Maximum Value	50 percentile limit	50 percentile value	Exceedance (yes/no)	90 percentile limit	90 percentile value	Exceedance (yes/no)
Biochemical Oxygen Demand	Milligrams per Litre	Weekly	0	-	-	14	-	-	18	-	-
Nitrogen (Ammonia)	Milligrams per Litre	Weekly	0	-	-	-	-	-	2.0	-	-
Nitrogen (Total)	Milligrams per Litre	Weekly	0	-	-	4	-	-	7	-	-
Phosphorus (Total)	Milligrams per Litre	Weekly	0	-	-	-	-	-	0.3	-	-
Total Dissolved Solids	Milligrams per Litre	Weekly	0	-	-	1650	-	-	-	-	-

Volume Monitoring	Unit of measure	Monitoring frequency required when discharging	Average Value
Liquids discharged to water	kilolitres per day	Continuous	0

Volume Limit	Unit of measure	Yearly Licence requirements				
		Monitoring frequency required when discharging	Number of results	Volume Limit	Maximum Value	Exceedance (yes/no)
Liquids discharged to water	kilolitres per day	Daily	0	10000	-	-

Monitoring point 2

Discharge to waters, Cooling Water quality and volume monitoring

Pollutant	Units of measure	Licence requirements			July						August						September					
		Monitoring frequency required when discharging	0 percentile limit	100 percentile limit	Number of results	Minimum Value	Mean Value	Median Value	Maximum Value	Exceedance (yes/no)	Number of results	Minimum Value	Mean Value	Median Value	Maximum Value	Exceedance (yes/no)	Number of results	Minimum Value	Mean Value	Median Value	Maximum Value	Exceedance (yes/no)
Biochemical Oxygen Demand	Milligrams per Litre	Monthly	-	-	1	-	4	-	-	-	0	-	-	-	-	0	-	-	-	-	-	-
Conductivity	Millisiemens per cm	Weekly	-	-	5	49	68	71	80	-	0	-	-	-	-	0	-	-	-	-	-	-
Nitrogen (Total)	Milligrams per Litre	Monthly	-	-	1	-	0	-	-	-	0	-	-	-	-	0	-	-	-	-	-	-
Oil and Grease	Milligrams per Litre	Monthly	-	5	1	-	3	-	-	no	0	-	-	-	-	0	-	-	-	-	-	-
pH	pH	Weekly	6.5	8.5	5	7.36	7.46	7.42	7.67	no	0	-	-	-	-	0	-	-	-	-	-	-
Phosphorus (Total)	Milligrams per Litre	Monthly	-	-	1	-	< 0.01	-	-	-	0	-	-	-	-	0	-	-	-	-	-	-
Total Dissolved Solids	Milligrams per Litre	Monthly	-	200	1	-	31	-	-	no	0	-	-	-	-	0	-	-	-	-	-	-
Total Suspended Solids	Milligrams per Litre	Monthly	-	-	1	-	< 2	-	-	-	0	-	-	-	-	0	-	-	-	-	-	-
Zinc	Milligrams per Litre	Monthly	-	-	1	-	< 2	-	-	-	0	-	-	-	-	0	-	-	-	-	-	-
		Monthly Samples Collected			2 July 2018																	
		Monthly Results Obtained			17 July 2018																	
		Monthly Results Published			2 August 2018																	

Pollutant	Units of measure	Licence requirements			October						November						December					
		Monitoring frequency required when discharging	0 percentile limit	100 percentile limit	Number of results	Minimum Value	Mean Value	Median Value	Maximum Value	Exceedance (yes/no)	Number of results	Minimum Value	Mean Value	Median Value	Maximum Value	Exceedance (yes/no)	Number of results	Minimum Value	Mean Value	Median Value	Maximum Value	Exceedance (yes/no)
Biochemical Oxygen Demand	Milligrams per Litre	Monthly	-	-	0	-	-	-	-	-	0	-	-	-	-	0	-	-	-	-	-	-
Conductivity	Millisiemens per cm	Weekly	-	-	0	-	-	-	-	-	0	-	-	-	-	0	-	-	-	-	-	-
Nitrogen (Total)	Milligrams per Litre	Monthly	-	-	0	-	-	-	-	-	0	-	-	-	-	0	-	-	-	-	-	-
Oil and Grease	Milligrams per Litre	Monthly	-	5	0	-	-	-	-	-	0	-	-	-	-	0	-	-	-	-	-	-
pH	pH	Weekly	6.5	8.5	0	-	-	-	-	-	0	-	-	-	-	0	-	-	-	-	-	-
Phosphorus (Total)	Milligrams per Litre	Monthly	-	-	0	-	-	-	-	-	0	-	-	-	-	0	-	-	-	-	-	-
Total Dissolved Solids	Milligrams per Litre	Monthly	-	200	0	-	-	-	-	-	0	-	-	-	-	0	-	-	-	-	-	-
Total Suspended Solids	Milligrams per Litre	Monthly	-	-	0	-	-	-	-	-	0	-	-	-	-	0	-	-	-	-	-	-
Zinc	Milligrams per Litre	Monthly	-	-	0	-	-	-	-	-	0	-	-	-	-	0	-	-	-	-	-	-
		Monthly Samples Collected																				
		Monthly Results Obtained																				
		Monthly Results Published																				

Monitoring point 2

Discharge to waters, Cooling Water quality and volume monitoring

Pollutant	Units of measure	Licence requirements			January						February						March					
		Monitoring frequency required when discharging	0 percentile limit	100 percentile limit	Number of results	Minimum Value	Mean Value	Median Value	Maximum Value	Exceedance (yes/no)	Number of results	Minimum Value	Mean Value	Median Value	Maximum Value	Exceedance (yes/no)	Number of results	Minimum Value	Mean Value	Median Value	Maximum Value	Exceedance (yes/no)
Biochemical Oxygen Demand	Milligrams per Litre	Monthly	-	-	0	-	-	-	-	-	0	-	-	-	-	-	0	-	-	-	-	-
Conductivity	Millisiemens per cm	Weekly	-	-	0	-	-	-	-	-	0	-	-	-	-	-	0	-	-	-	-	-
Nitrogen (Total)	Milligrams per Litre	Monthly	-	-	0	-	-	-	-	-	0	-	-	-	-	-	0	-	-	-	-	-
Oil and Grease	Milligrams per Litre	Monthly	-	5	0	-	-	-	-	-	0	-	-	-	-	-	0	-	-	-	-	-
pH	pH	Weekly	6.5	8.5	0	-	-	-	-	-	0	-	-	-	-	-	0	-	-	-	-	-
Phosphorus (Total)	Milligrams per Litre	Monthly	-	-	0	-	-	-	-	-	0	-	-	-	-	-	0	-	-	-	-	-
Total Dissolved Solids	Milligrams per Litre	Monthly	-	200	0	-	-	-	-	-	0	-	-	-	-	-	0	-	-	-	-	-
Total Suspended Solids	Milligrams per Litre	Monthly	-	-	0	-	-	-	-	-	0	-	-	-	-	-	0	-	-	-	-	-
Zinc	Milligrams per Litre	Monthly	-	-	0	-	-	-	-	-	0	-	-	-	-	-	0	-	-	-	-	-
		Monthly Samples Collected																				
		Monthly Results Obtained																				
		Monthly Results Published																				

Pollutant	Units of measure	Licence requirements			April						May						June					
		Monitoring frequency required when discharging	0 percentile limit	100 percentile limit	Number of results	Minimum Value	Mean Value	Median Value	Maximum Value	Exceedance (yes/no)	Number of results	Minimum Value	Mean Value	Median Value	Maximum Value	Exceedance (yes/no)	Number of results	Minimum Value	Mean Value	Median Value	Maximum Value	Exceedance (yes/no)
Biochemical Oxygen Demand	Milligrams per Litre	Monthly	-	-	0	-	-	-	-	-	0	-	-	-	-	-	0	-	-	-	-	-
Conductivity	Millisiemens per cm	Weekly	-	-	0	-	-	-	-	-	0	-	-	-	-	-	0	-	-	-	-	-
Nitrogen (Total)	Milligrams per Litre	Monthly	-	-	0	-	-	-	-	-	0	-	-	-	-	-	0	-	-	-	-	-
Oil and Grease	Milligrams per Litre	Monthly	-	5	0	-	-	-	-	-	0	-	-	-	-	-	0	-	-	-	-	-
pH	pH	Weekly	6.5	8.5	0	-	-	-	-	-	0	-	-	-	-	-	0	-	-	-	-	-
Phosphorus (Total)	Milligrams per Litre	Monthly	-	-	0	-	-	-	-	-	0	-	-	-	-	-	0	-	-	-	-	-
Total Dissolved Solids	Milligrams per Litre	Monthly	-	200	0	-	-	-	-	-	0	-	-	-	-	-	0	-	-	-	-	-
Total Suspended Solids	Milligrams per Litre	Monthly	-	-	0	-	-	-	-	-	0	-	-	-	-	-	0	-	-	-	-	-
Zinc	Milligrams per Litre	Monthly	-	-	0	-	-	-	-	-	0	-	-	-	-	-	0	-	-	-	-	-
		Monthly Samples Collected																				
		Monthly Results Obtained																				
		Monthly Results Published																				

Volume Monitoring	Unit of measure	Monitoring frequency required when discharging	Average Value
Liquids discharged to water	kilolitres per day	Continuous	283

Yearly Licence requirements						
Volume Limit	Unit of measure	Monitoring frequency required when discharging	Number of results	Volume Limit	Maximum Value	Exceedance (yes/no)
Liquids discharged to water	kilolitres per day	Daily	32	10000	810	no

Monitoring points

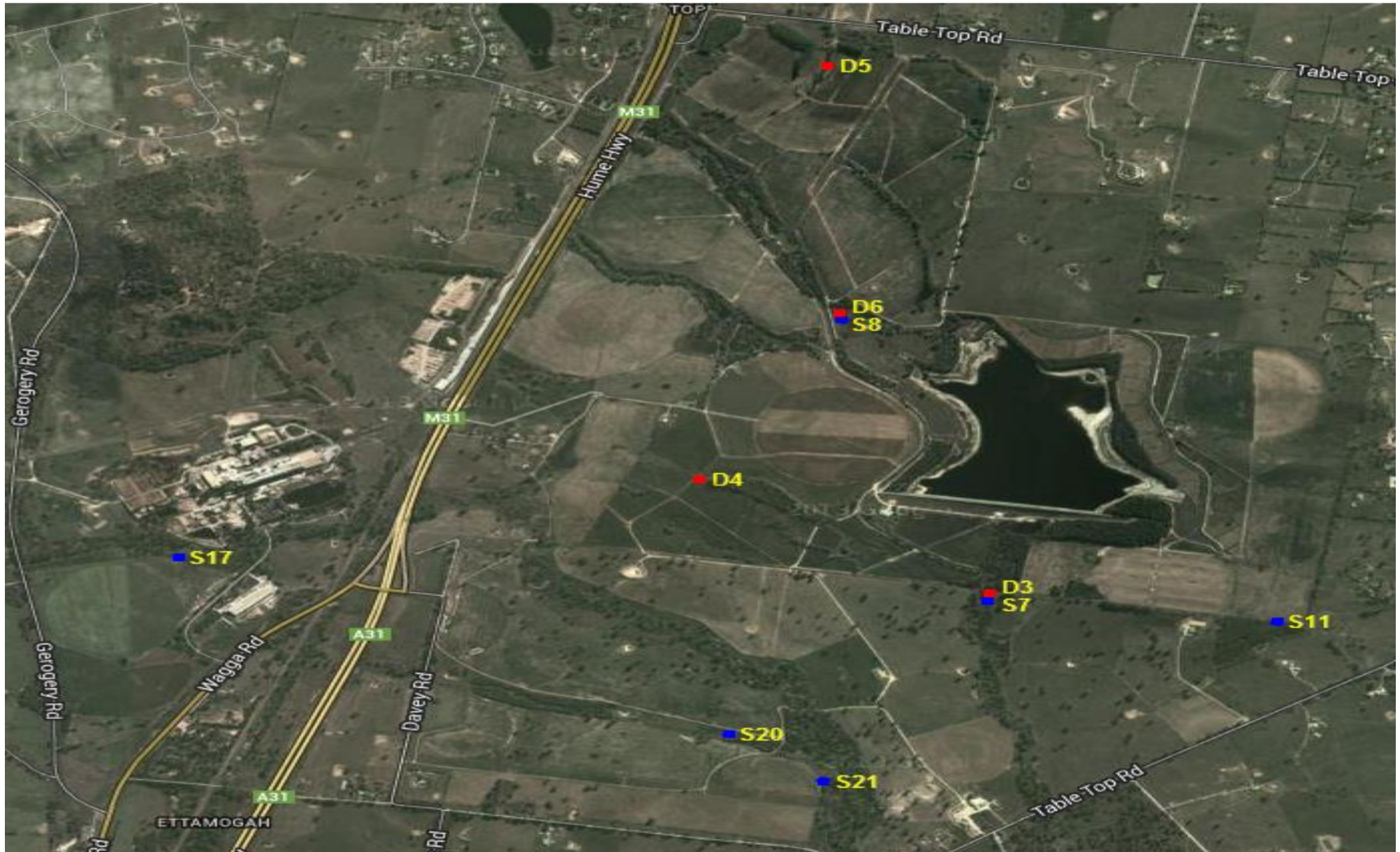
14 to 23

Groundwater quality monitoring

Month	August			November			February			May			
	Pollutant	Standing Water Level	pH	Conductivity	Standing Water Level	pH	Conductivity	Standing Water Level	pH	Conductivity	Standing Water Level	pH	Conductivity
	Units of measure	Meters		microsiemens per centimeter	Meters		microsiemens per centimeter	Meters		microsiemens per centimeter	Meters		microsiemens per centimeter
Deep Bores	3												
	4												
	5												
	6												
Shallow Bores	7												
	8												
	11												
	17												
	20												
	21												
3 Monthly Samples Collected													
3 Monthly Results Obtained													
3 Monthly Results Published													

Pollutant	Units of measure	Deep Bores				Shallow Bores							
		3	4	5	6	7	8	11	17	20	21		
Nitrate	Milligrams per Litre												
Total Nitrogen	Milligrams per Litre												
Total Phosphorus	Milligrams per Litre												
	Annual Samples Collected												
	Annual Results Obtained												
	Annual Results Published												

Ettamogah Site map showing Groundwater Bores



Note: Shallow Bores are denoted with blue markers and Deep Bores are denoted by red markers. The water quality of 8 and 9 mile creeks are also monitored, but are not required to be reported by EPL 1272

Non compliance log

Pollutant	Sample dates	Detail

Correction log

Sample date and time	Original data	Corrected data	Date corrected	Date originally published	Reason

Community Complaints

Complaint	Date	Detail