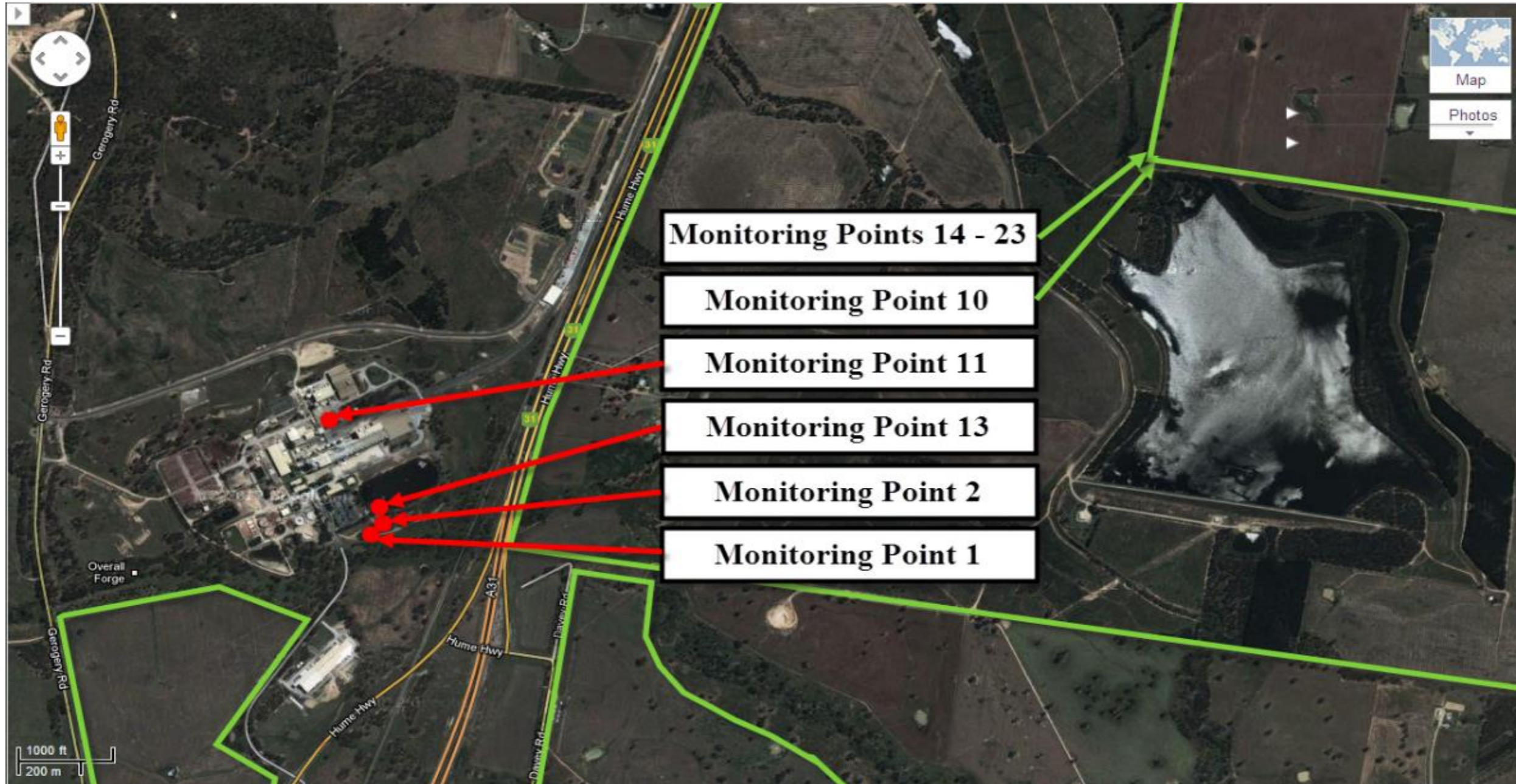


A full copy of our license can be found on the EPA website under the following address  
<http://www.epa.nsw.gov.au/prpoeoapp/ViewPOEOLicence.aspx?DOCID=32757&SYSUID=1&LICID=1272>

Result data last updated                      3 May 2019

**Map of Norske Skog Albury Paper Mills Environmental Protection Licence compliance monitoring sites**



Courtesy of Google Maps

Monitoring point

1

Discharge to waters, Effluent quality and volume monitoring

Pollutant	Units of measure	Licence requirements			July						August						September					
		Monitoring frequency required when discharging	0 percentile limit	100 percentile limit	Number of results	Minimum Value	Mean Value	Median Value	Maximum Value	Exceedance (yes/no)	Number of results	Minimum Value	Mean Value	Median Value	Maximum Value	Exceedance (yes/no)	Number of results	Minimum Value	Mean Value	Median Value	Maximum Value	Exceedance (yes/no)
Biochemical Oxygen Demand	Milligrams per Litre	Weekly	-	20	0	-	-	-	-	-	0	-	-	-	-	-	0	-	-	-	-	-
Chemical Oxygen Demand	Milligrams per Litre	Weekly	-	-	0	-	-	-	-	-	0	-	-	-	-	-	0	-	-	-	-	-
Colour	Hazen	Weekly	-	-	0	-	-	-	-	-	0	-	-	-	-	-	0	-	-	-	-	-
Copper	Milligrams per Litre	Quarterly	-	0.05	0	-	-	-	-	-	0	-	-	-	-	-	0	-	-	-	-	-
Nitrogen (Ammonia)	Milligrams per Litre	Weekly	-	3.0	0	-	-	-	-	-	0	-	-	-	-	-	0	-	-	-	-	-
Nitrogen (Total)	Milligrams per Litre	Weekly	-	15	0	-	-	-	-	-	0	-	-	-	-	-	0	-	-	-	-	-
Oil and Grease	Milligrams per Litre	Weekly	-	10	0	-	-	-	-	-	0	-	-	-	-	-	0	-	-	-	-	-
pH	pH	Weekly	6.5	8.5	0	-	-	-	-	-	0	-	-	-	-	-	0	-	-	-	-	-
Phosphorus (Total)	Milligrams per Litre	Weekly	-	0.5	0	-	-	-	-	-	0	-	-	-	-	-	0	-	-	-	-	-
Total Dissolved Solids	Milligrams per Litre	Weekly	-	2000	0	-	-	-	-	-	0	-	-	-	-	-	0	-	-	-	-	-
Total Suspended Solids	Milligrams per Litre	Weekly	-	20	0	-	-	-	-	-	0	-	-	-	-	-	0	-	-	-	-	-
Zinc	Milligrams per Litre	Monthly	-	0.4	0	-	-	-	-	-	0	-	-	-	-	-	0	-	-	-	-	-
		Monthly Samples Collected																				
		Monthly Results Obtained																				
		Monthly Results Published																				
		Quarterly Samples Collected																				
		Quarterly Results Obtained																				
		Quarterly Results Published																				

Pollutant	Units of measure	Licence requirements			October						November						December					
		Monitoring frequency required when discharging	0 percentile limit	100 percentile limit	Number of results	Minimum Value	Mean Value	Median Value	Maximum Value	Exceedance (yes/no)	Number of results	Minimum Value	Mean Value	Median Value	Maximum Value	Exceedance (yes/no)	Number of results	Minimum Value	Mean Value	Median Value	Maximum Value	Exceedance (yes/no)
Biochemical Oxygen Demand	Milligrams per Litre	Weekly	-	20	0	-	-	-	-	-	0	-	-	-	-	-	0	-	-	-	-	-
Chemical Oxygen Demand	Milligrams per Litre	Weekly	-	-	0	-	-	-	-	-	0	-	-	-	-	-	0	-	-	-	-	-
Colour	Hazen	Weekly	-	-	0	-	-	-	-	-	0	-	-	-	-	-	0	-	-	-	-	-
Copper	Milligrams per Litre	Quarterly	-	0.05	0	-	-	-	-	-	0	-	-	-	-	-	0	-	-	-	-	-
Nitrogen (Ammonia)	Milligrams per Litre	Weekly	-	3.0	0	-	-	-	-	-	0	-	-	-	-	-	0	-	-	-	-	-
Nitrogen (Total)	Milligrams per Litre	Weekly	-	15	0	-	-	-	-	-	0	-	-	-	-	-	0	-	-	-	-	-
Oil and Grease	Milligrams per Litre	Weekly	-	10	0	-	-	-	-	-	0	-	-	-	-	-	0	-	-	-	-	-
pH	pH	Weekly	6.5	8.5	0	-	-	-	-	-	0	-	-	-	-	-	0	-	-	-	-	-
Phosphorus (Total)	Milligrams per Litre	Weekly	-	0.5	0	-	-	-	-	-	0	-	-	-	-	-	0	-	-	-	-	-
Total Dissolved Solids	Milligrams per Litre	Weekly	-	2000	0	-	-	-	-	-	0	-	-	-	-	-	0	-	-	-	-	-
Total Suspended Solids	Milligrams per Litre	Weekly	-	20	0	-	-	-	-	-	0	-	-	-	-	-	0	-	-	-	-	-
Zinc	Milligrams per Litre	Monthly	-	0.4	0	-	-	-	-	-	0	-	-	-	-	-	0	-	-	-	-	-
		Monthly Samples Collected																				
		Monthly Results Obtained																				
		Monthly Results Published																				
		Quarterly Samples Collected																				
		Quarterly Results Obtained																				
		Quarterly Results Published																				



Monitoring point

1

Discharge to waters, Effluent quality and volume monitoring

Pollutant	Units of measure	Licence requirements			January						February						March					
		Monitoring frequency required when discharging	0 percentile limit	100 percentile limit	Number of results	Minimum Value	Mean Value	Median Value	Maximum Value	Exceedance (yes/no)	Number of results	Minimum Value	Mean Value	Median Value	Maximum Value	Exceedance (yes/no)	Number of results	Minimum Value	Mean Value	Median Value	Maximum Value	Exceedance (yes/no)
Biochemical Oxygen Demand	Milligrams per Litre	Weekly	-	20	0	-	-	-	-	-	0	-	-	-	-	-	0	-	-	-	-	-
Chemical Oxygen Demand	Milligrams per Litre	Weekly	-	-	0	-	-	-	-	-	0	-	-	-	-	-	0	-	-	-	-	-
Colour	Hazen	Weekly	-	-	0	-	-	-	-	-	0	-	-	-	-	-	0	-	-	-	-	-
Copper	Milligrams per Litre	Quarterly	-	0.05	0	-	-	-	-	-	0	-	-	-	-	-	0	-	-	-	-	-
Nitrogen (Ammonia)	Milligrams per Litre	Weekly	-	3.0	0	-	-	-	-	-	0	-	-	-	-	-	0	-	-	-	-	-
Nitrogen (Total)	Milligrams per Litre	Weekly	-	15	0	-	-	-	-	-	0	-	-	-	-	-	0	-	-	-	-	-
Oil and Grease	Milligrams per Litre	Weekly	-	10	0	-	-	-	-	-	0	-	-	-	-	-	0	-	-	-	-	-
pH	pH	Weekly	6.5	8.5	0	-	-	-	-	-	0	-	-	-	-	-	0	-	-	-	-	-
Phosphorus (Total)	Milligrams per Litre	Weekly	-	0.5	0	-	-	-	-	-	0	-	-	-	-	-	0	-	-	-	-	-
Total Dissolved Solids	Milligrams per Litre	Weekly	-	2000	0	-	-	-	-	-	0	-	-	-	-	-	0	-	-	-	-	-
Total Suspended Solids	Milligrams per Litre	Weekly	-	20	0	-	-	-	-	-	0	-	-	-	-	-	0	-	-	-	-	-
Zinc	Milligrams per Litre	Monthly	-	0.4	0	-	-	-	-	-	0	-	-	-	-	-	0	-	-	-	-	-
		Monthly Samples Collected																				
		Monthly Results Obtained																				
		Monthly Results Published																				
		Quarterly Samples Collected																				
		Quarterly Results Obtained																				
		Quarterly Results Published																				

Pollutant	Units of measure	Licence requirements			April						May						June					
		Monitoring frequency required when discharging	0 percentile limit	100 percentile limit	Number of results	Minimum Value	Mean Value	Median Value	Maximum Value	Exceedance (yes/no)	Number of results	Minimum Value	Mean Value	Median Value	Maximum Value	Exceedance (yes/no)	Number of results	Minimum Value	Mean Value	Median Value	Maximum Value	Exceedance (yes/no)
Biochemical Oxygen Demand	Milligrams per Litre	Weekly	-	20	0	-	-	-	-	-	0	-	-	-	-	-	0	-	-	-	-	-
Chemical Oxygen Demand	Milligrams per Litre	Weekly	-	-	0	-	-	-	-	-	0	-	-	-	-	-	0	-	-	-	-	-
Colour	Hazen	Weekly	-	-	0	-	-	-	-	-	0	-	-	-	-	-	0	-	-	-	-	-
Copper	Milligrams per Litre	Quarterly	-	0.05	0	-	-	-	-	-	0	-	-	-	-	-	0	-	-	-	-	-
Nitrogen (Ammonia)	Milligrams per Litre	Weekly	-	3.0	0	-	-	-	-	-	0	-	-	-	-	-	0	-	-	-	-	-
Nitrogen (Total)	Milligrams per Litre	Weekly	-	15	0	-	-	-	-	-	0	-	-	-	-	-	0	-	-	-	-	-
Oil and Grease	Milligrams per Litre	Weekly	-	10	0	-	-	-	-	-	0	-	-	-	-	-	0	-	-	-	-	-
pH	pH	Weekly	6.5	8.5	0	-	-	-	-	-	0	-	-	-	-	-	0	-	-	-	-	-
Phosphorus (Total)	Milligrams per Litre	Weekly	-	0.5	0	-	-	-	-	-	0	-	-	-	-	-	0	-	-	-	-	-
Total Dissolved Solids	Milligrams per Litre	Weekly	-	2000	0	-	-	-	-	-	0	-	-	-	-	-	0	-	-	-	-	-
Total Suspended Solids	Milligrams per Litre	Weekly	-	20	0	-	-	-	-	-	0	-	-	-	-	-	0	-	-	-	-	-
Zinc	Milligrams per Litre	Monthly	-	0.4	0	-	-	-	-	-	0	-	-	-	-	-	0	-	-	-	-	-
		Monthly Samples Collected																				
		Monthly Results Obtained																				
		Monthly Results Published																				
		Quarterly Samples Collected																				
		Quarterly Results Obtained																				
		Quarterly Results Published																				

Pollutant	Units of measure	Monitoring frequency required when discharging	Yearly Licence requirements								
			Number of results	Minimum Value	Maximum Value	50 percentile limit	50 percentile value	Exceedance (yes/no)	90 percentile limit	90 percentile value	Exceedance (yes/no)
Biochemical Oxygen Demand	Milligrams per Litre	Weekly	0	-	-	14	-	-	18	-	-
Nitrogen (Ammonia)	Milligrams per Litre	Weekly	0	-	-	-	-	-	2.0	-	-
Nitrogen (Total)	Milligrams per Litre	Weekly	0	-	-	4	-	-	7	-	-
Phosphorus (Total)	Milligrams per Litre	Weekly	0	-	-	-	-	-	0.3	-	-
Total Dissolved Solids	Milligrams per Litre	Weekly	0	-	-	1650	-	-	-	-	-

Volume Monitoring	Unit of measure	Monitoring frequency required when discharging	Average Value
Liquids discharged to water	kilolitres per day	Continuous	0

Volume Limit	Unit of measure	Yearly Licence requirements				
		Monitoring frequency required when discharging	Number of results	Volume Limit	Maximum Value	Exceedance (yes/no)
Liquids discharged to water	kilolitres per day	Daily	0	10000	-	-

Monitoring point 2

Discharge to waters, Cooling Water quality and volume monitoring

Pollutant	Units of measure	Licence requirements			July						August						September					
		Monitoring frequency required when discharging	0 percentile limit	100 percentile limit	Number of results	Minimum Value	Mean Value	Median Value	Maximum Value	Exceedance (yes/no)	Number of results	Minimum Value	Mean Value	Median Value	Maximum Value	Exceedance (yes/no)	Number of results	Minimum Value	Mean Value	Median Value	Maximum Value	Exceedance (yes/no)
Biochemical Oxygen Demand	Milligrams per Litre	Monthly	-	-	1	-	4	-	-	-	1	-	< 2	-	-	1	-	< 2	-	-	-	
Conductivity	Millisiemens per cm	Weekly	-	-	5	49	68	71	80	-	4	67	70	70	73	-	4	67	71	72	74	-
Nitrogen (Total)	Milligrams per Litre	Monthly	-	-	1	-	0	-	-	-	1	-	0	-	-	-	1	-	0	-	-	-
Oil and Grease	Milligrams per Litre	Monthly	-	5	1	-	3	-	-	no	1	-	2	-	-	no	1	-	3	-	-	no
pH	pH	Weekly	6.5	8.5	5	7.36	7.46	7.42	7.67	no	4	7.32	7.42	7.41	7.53	no	4	7.24	7.47	7.44	7.78	no
Phosphorus (Total)	Milligrams per Litre	Monthly	-	-	1	-	< 0.01	-	-	-	1	-	0	-	-	-	1	-	< 0.01	-	-	-
Total Dissolved Solids	Milligrams per Litre	Monthly	-	200	1	-	31	-	-	no	1	-	38	-	-	no	1	-	38	-	-	no
Total Suspended Solids	Milligrams per Litre	Monthly	-	-	1	-	< 2	-	-	-	1	-	< 2	-	-	-	1	-	< 2	-	-	-
Zinc	Milligrams per Litre	Monthly	-	-	1	-	< 2	-	-	-	1	-	< 2	-	-	-	1	-	< 2	-	-	-
Monthly Samples Collected				2 July 2018						6 August 2018						3 September 2018						
Monthly Results Obtained				17 July 2018						23 August 2018						19 September 2018						
Monthly Results Published				2 August 2018						29 August 2018						26 September 2018						

Pollutant	Units of measure	Licence requirements			October						November						December					
		Monitoring frequency required when discharging	0 percentile limit	100 percentile limit	Number of results	Minimum Value	Mean Value	Median Value	Maximum Value	Exceedance (yes/no)	Number of results	Minimum Value	Mean Value	Median Value	Maximum Value	Exceedance (yes/no)	Number of results	Minimum Value	Mean Value	Median Value	Maximum Value	Exceedance (yes/no)
Biochemical Oxygen Demand	Milligrams per Litre	Monthly	-	-	1	-	< 2	-	-	-	1	-	5	-	-	1	-	< 2	-	-	-	
Conductivity	Millisiemens per cm	Weekly	-	-	5	66	69	67	77	-	4	64	69	69	75	-	5	68	71	71	76	-
Nitrogen (Total)	Milligrams per Litre	Monthly	-	-	1	-	0	-	-	-	1	-	0	-	-	-	1	-	0	-	-	-
Oil and Grease	Milligrams per Litre	Monthly	-	5	1	-	5	-	-	no	1	-	1	-	-	no	1	-	2	-	-	no
pH	pH	Weekly	6.5	8.5	5	7.27	7.52	7.48	7.94	no	4	7.16	7.31	7.30	7.49	no	5	7.19	7.27	7.30	7.33	no
Phosphorus (Total)	Milligrams per Litre	Monthly	-	-	1	-	0	-	-	-	1	-	0	-	-	-	1	-	< 0.01	-	-	-
Total Dissolved Solids	Milligrams per Litre	Monthly	-	200	1	-	30	-	-	no	1	-	35	-	-	no	1	-	36	-	-	no
Total Suspended Solids	Milligrams per Litre	Monthly	-	-	1	-	< 2	-	-	-	1	-	< 2	-	-	-	1	-	< 2	-	-	-
Zinc	Milligrams per Litre	Monthly	-	-	1	-	< 2	-	-	-	1	-	< 2	-	-	-	1	-	< 2	-	-	-
Monthly Samples Collected				1 October 2018						5 November 2018						3 December 2018						
Monthly Results Obtained				23 October 2018						27 November 2018						14 December 2018						
Monthly Results Published				11 November 2018						13 December 2018						30 December 2018						

Monitoring point 2

Discharge to waters, Cooling Water quality and volume monitoring

Pollutant	Units of measure	Licence requirements			January						February						March						
		Monitoring frequency required when discharging	0 percentile limit	100 percentile limit	Number of results	Minimum Value	Mean Value	Median Value	Maximum Value	Exceedance (yes/no)	Number of results	Minimum Value	Mean Value	Median Value	Maximum Value	Exceedance (yes/no)	Number of results	Minimum Value	Mean Value	Median Value	Maximum Value	Exceedance (yes/no)	
Biochemical Oxygen Demand	Milligrams per Litre	Monthly	-	-	1	-	< 2	-	-	-	1	-	< 2	-	-	1	-	< 2	-	-	-		
Conductivity	Millisiemens per cm	Weekly	-	-	4	72	74	73	77	-	4	72	79	75	93	4	65	69	69	73	-		
Nitrogen (Total)	Milligrams per Litre	Monthly	-	-	1	-	0	-	-	-	1	-	0	-	-	1	-	0	-	-	-		
Oil and Grease	Milligrams per Litre	Monthly	-	5	1	-	< 5	-	-	no	1	-	4	-	-	1	-	3	-	-	no		
pH	pH	Weekly	6.5	8.5	4	7.29	7.40	7.37	7.55	no	4	7.22	7.27	7.27	7.31	4	7.13	7.20	7.19	7.31	no		
Phosphorus (Total)	Milligrams per Litre	Monthly	-	-	1	-	0	-	-	-	1	-	< 0.01	-	-	1	-	< 0.01	-	-	-		
Total Dissolved Solids	Milligrams per Litre	Monthly	-	200	1	-	47	-	-	no	1	-	34	-	-	1	-	49	-	-	no		
Total Suspended Solids	Milligrams per Litre	Monthly	-	-	1	-	< 2	-	-	-	1	-	< 2	-	-	1	-	< 2	-	-	-		
Zinc	Milligrams per Litre	Monthly	-	-	1	-	0	-	-	-	1	-	< 2	-	-	1	-	0	-	-	-		
		Monthly Samples Collected				14 January 2019						4 February 2019						4 March 2019					
		Monthly Results Obtained				30 January 2019						15 February 2019						19 March 2019					
		Monthly Results Published				31 January 2019						5 March 2019						5 April 2019					

Pollutant	Units of measure	Licence requirements			April						May						June						
		Monitoring frequency required when discharging	0 percentile limit	100 percentile limit	Number of results	Minimum Value	Mean Value	Median Value	Maximum Value	Exceedance (yes/no)	Number of results	Minimum Value	Mean Value	Median Value	Maximum Value	Exceedance (yes/no)	Number of results	Minimum Value	Mean Value	Median Value	Maximum Value	Exceedance (yes/no)	
Biochemical Oxygen Demand	Milligrams per Litre	Monthly	-	-	1	-	< 2	-	-	-	0	-	-	-	-	0	-	-	-	-	-		
Conductivity	Millisiemens per cm	Weekly	-	-	5	65	69	69	73	-	1	73	73	73	73	0	-	-	-	-	-		
Nitrogen (Total)	Milligrams per Litre	Monthly	-	-	1	-	0	-	-	-	0	-	-	-	-	0	-	-	-	-	-		
Oil and Grease	Milligrams per Litre	Monthly	-	5	1	-	< 5	-	-	no	0	-	-	-	-	0	-	-	-	-	-		
pH	pH	Weekly	6.5	8.5	5	7.32	7.40	7.42	7.44	no	1	7.36	7.36	7.36	7.36	0	-	-	-	-	-		
Phosphorus (Total)	Milligrams per Litre	Monthly	-	-	1	-	< 0.01	-	-	-	0	-	-	-	-	0	-	-	-	-	-		
Total Dissolved Solids	Milligrams per Litre	Monthly	-	200	1	-	44	-	-	no	0	-	-	-	-	0	-	-	-	-	-		
Total Suspended Solids	Milligrams per Litre	Monthly	-	-	1	-	< 2	-	-	-	0	-	-	-	-	0	-	-	-	-	-		
Zinc	Milligrams per Litre	Monthly	-	-	1	-	< 2	-	-	-	0	-	-	-	-	0	-	-	-	-	-		
		Monthly Samples Collected				1 April 2019																	
		Monthly Results Obtained				17 April 2019																	
		Monthly Results Published				3 May 2019																	

Volume Monitoring	Unit of measure	Monitoring frequency required when discharging	Average Value
Liquids discharged to water	kilolitres per day	Continuous	2268

Yearly Licence requirements						
Volume Limit	Unit of measure	Monitoring frequency required when discharging	Number of results	Volume Limit	Maximum Value	Exceedance (yes/no)
Liquids discharged to water	kilolitres per day	Daily	292	10000	8249	no

**Monitoring Point 7**
**Maryvale effluent reuse system volume monitoring**

Volume Monitoring	Unit of measure	Monitoring frequency required	Average Value	Maximum Value
Maryvale Effluent Storage Dam	kilolitres per day	Continuous	7728	14170

**Monitoring point 10**
**Soil Monitoring**

See separate PDF report titled 'Soil Properties Report'

**Monitoring point 11**
**Discharge to Air, Air Emissions Monitoring**

Pollutant	Units of measure	Monitoring frequency required	Number of results	July	August	September	October	November	December	January	February	March	April	May	June
Coarse Particulates	Milligrams per cubic meter	2 times a year	1				1								
Fine Particulates	Milligrams per cubic meter	2 times a year	1				90								
Nitrogen Oxides	Milligrams per cubic meter	2 times a year	1				188								
Bi-annual Samples Collected							30 Oct 18								
Bi-annual Results Obtained							26 Nov 18								
Bi-annual Results Published							13 Dec 18								

**Monitoring point 13**
**Effluent quality monitoring - 4 Day Pond Outlet**

Pollutant	Units of measure	Monitoring frequency required when discharging	July	August	September	October	November	December	January	February	March	April	May	June
Biochemical Oxygen Demand	Milligrams per Litre	Monthly	7	8	6	10	8	5	4	7	5	5		
Nitrogen (Total)	Milligrams per Litre	Monthly	3.1	3.1	0.1	4.1	0.2	2.0	4.1	2.7	3.5	2.3		
pH	pH	Monthly	7.9	7.8	8.0	7.7	8.0	8.0	8.1	8.1	7.8	8.1		
Phosphorus (Total)	Milligrams per Litre	Monthly	0.34	0.42	0.13	1.66	0.11	0.14	0.70	0.22	0.21	0.34		
Total Dissolved Solids	Milligrams per Litre	Monthly	886	968	967	966	964	1146	1202	1040	908	1274		
Total Suspended Solids	Milligrams per Litre	Monthly	10	10	3	10	7	4	4	20	10	20		
Zinc	Milligrams per Litre	Monthly	0.00	0.04	0.00	0.01	0.03	0.00	0.04	0.00	0.02	0.02		
Monthly Samples Collected			2 Jul 18	6 Aug 18	3 Sep 18	1 Oct 18	12 Nov 18	3 Dec 18	14 Jan 19	4 Feb 19	4 Mar 19	1 Apr 19		
Monthly Results Obtained			17 Jul 18	23 Aug 18	19 Sep 18	23 Oct 18	27 Nov 18	14 Dec 18	30 Jan 19	15 Feb 19	19 Mar 19	17 Apr 19		
Monthly Results Published			2 Aug 18	29 Aug 18	26 Sep 18	11 Nov 18	13 Dec 18	30 Dec 18	31 Jan 19	5 Mar 19	5 Apr 19	3 May 19		



Monitoring points

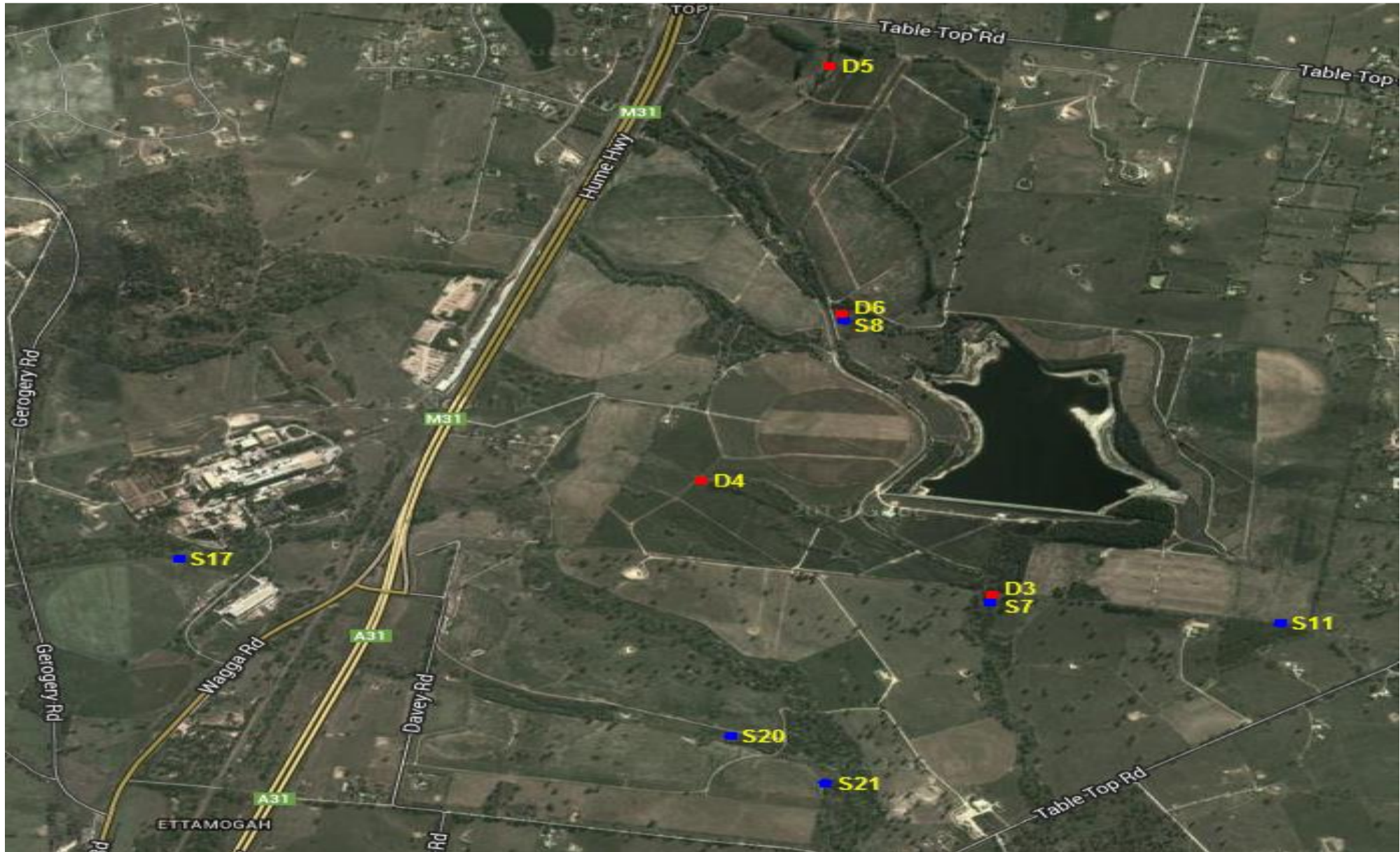
14 to 23

Groundwater quality monitoring

	Month	August			November			February			May			
		Pollutant	Standing Water Level	pH	Conductivity	Standing Water Level	pH	Conductivity	Standing Water Level	pH	Conductivity	Standing Water Level	pH	Conductivity
			Units of measure	Meters		microsiemens per centimeter	Meters		microsiemens per centimeter	Meters		microsiemens per centimeter	Meters	
Deep Bores	3	45.4	7.1	482	2.6	6.9	943	1.5	6.8	926				
	4	44.7	7.3	2877	1.5	7.2	3377	3.0	7.3	3424				
	5	45.0	7.3	4532	3.0	7.0	5317	2.9	7.0	5268				
	6	44.7	8.1	688	1.1	8.0	701	2.8	8.0	707				
Shallow Bores	7	9.7	7.3	3941	10.1	7.3	4113	10.3	7.1	4046				
	8	2.6	7.2	1410	Dry			Dry						
	11	7.0	7.3	6815	7.3	7.1	7144	7.3	7.1	7105				
	17	Dry			Dry			Dry						
	20	Dry			Dry			Dry						
	21	7.5	7.4	2288	7.3	7.3	2357	7.8	7.1	2304				
3 Monthly Samples Collected		15 Aug 18			20 Nov 18			27 Feb 19						
3 Monthly Results Obtained		28 Aug 18			28 Nov 18			27 Mar 19						
3 Monthly Results Published		29 Aug 18			13 Dec 18			05 Apr 19						

Pollutant	Units of measure	Deep Bores				Shallow Bores						
		3	4	5	6	7	8	11	17	20	21	
Nitrate	Milligrams per Litre	0.18	0.15	0.83	0.20	24.44	0.44	0.26				4.53
Total Nitrogen	Milligrams per Litre	0.0	8.6	4.7	0.0	24.4	0.4	0.0				4.5
Total Phosphorus	Milligrams per Litre	0.14	0.02	0.02	0.00	0.25	0.16	0.06				0.11
Annual Samples Collected		15 Aug 18	15 Aug 18	15 Aug 18	15 Aug 18	15 Aug 18	15 Aug 18	15 Aug 18	Bore Dry	Bore Dry		15 Aug 18
Annual Results Obtained		28 Aug 18	28 Aug 18	28 Aug 18	28 Aug 18	28 Aug 18	28 Aug 18	28 Aug 18				28 Aug 18
Annual Results Published		29 Aug 18	29 Aug 18	29 Aug 18	29 Aug 18	29 Aug 18	29 Aug 18	29 Aug 18				29 Aug 18

Ettamogah Site map showing Groundwater Bores



Note: Shallow Bores are denoted with blue markers and Deep Bores are denoted by red markers. The water quality of 8 and 9 mile creeks are also monitored, but are not required to be reported by EPL 1272

### Non compliance log

Pollutant	Sample dates	Detail

### Correction log

Sample date and time	Original data	Corrected data	Date corrected	Date originally published	Reason

### Community Complaints

Complaint	Date	Detail
Odour	01 April 2019	Compliant from neighbour. Nothing significant found. Dosed additional peroxide to reduce potential.
Odour	11 April 2019	Compliant from neighbour. Nothing significant found. Dosed additional peroxide to reduce potential.