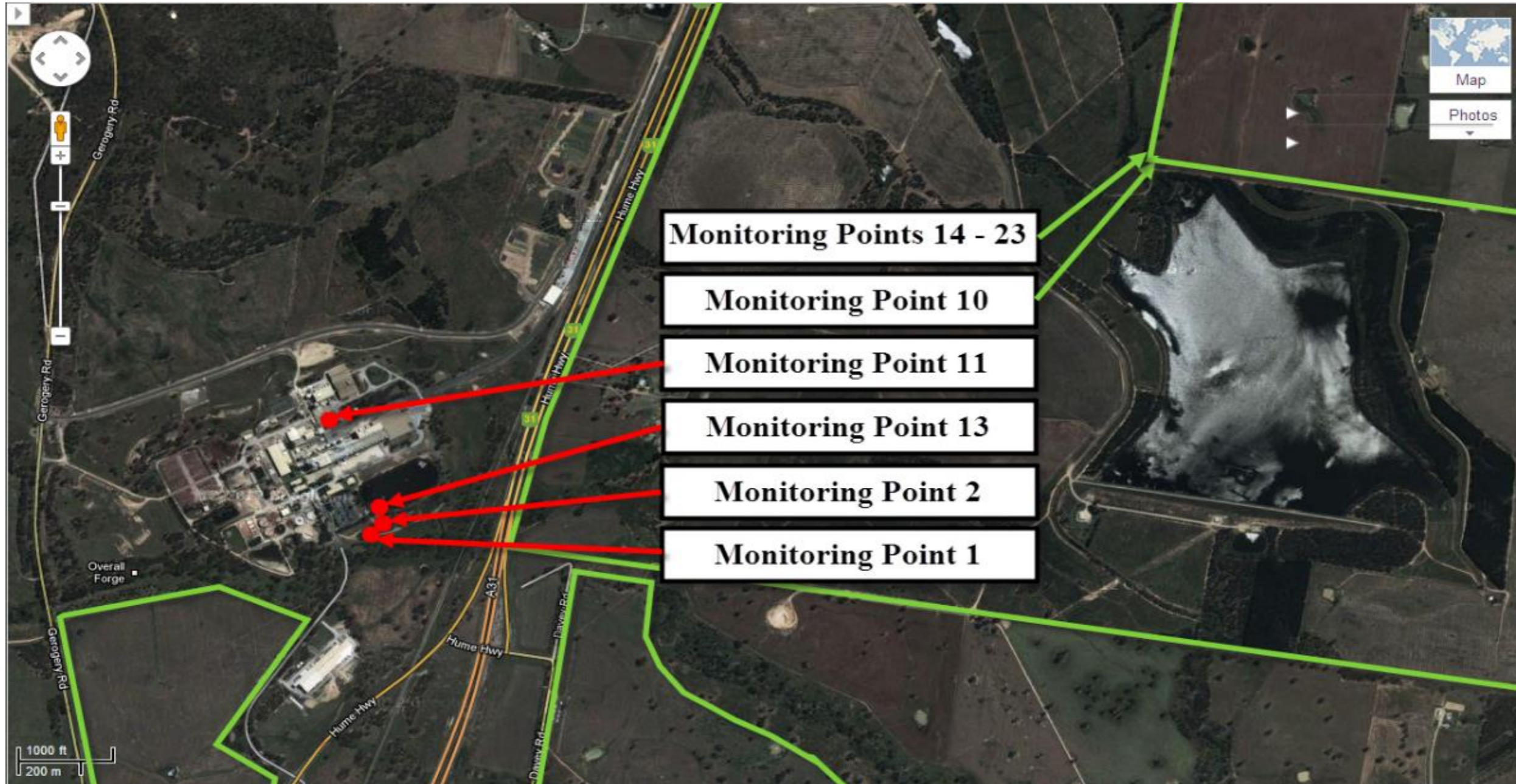


A full copy of our license can be found on the EPA website under the following address  
<http://www.epa.nsw.gov.au/prpoeoapp/ViewPOEOLicence.aspx?DOCID=32757&SYSUID=1&LICID=1272>

Result data last updated                      14 February 2020

**Map of Norske Skog Albury Paper Mills Environmental Protection Licence compliance monitoring sites**



Courtesy of Google Maps

Monitoring point

1

Discharge to waters, Effluent quality and volume monitoring

Pollutant	Units of measure	Licence requirements			July						August						September					
		Monitoring frequency required when discharging	0 percentile limit	100 percentile limit	Number of results	Minimum Value	Mean Value	Median Value	Maximum Value	Exceedance (yes/no)	Number of results	Minimum Value	Mean Value	Median Value	Maximum Value	Exceedance (yes/no)	Number of results	Minimum Value	Mean Value	Median Value	Maximum Value	Exceedance (yes/no)
Biochemical Oxygen Demand	Milligrams per Litre	Weekly	-	20	0	-	-	-	-	-	0	-	-	-	-	-	0	-	-	-	-	-
Chemical Oxygen Demand	Milligrams per Litre	Weekly	-	-	0	-	-	-	-	-	0	-	-	-	-	-	0	-	-	-	-	-
Colour	Hazen	Weekly	-	-	0	-	-	-	-	-	0	-	-	-	-	-	0	-	-	-	-	-
Copper	Milligrams per Litre	Quarterly	-	0.05	0	-	-	-	-	-	0	-	-	-	-	-	0	-	-	-	-	-
Nitrogen (Ammonia)	Milligrams per Litre	Weekly	-	3.0	0	-	-	-	-	-	0	-	-	-	-	-	0	-	-	-	-	-
Nitrogen (Total)	Milligrams per Litre	Weekly	-	15	0	-	-	-	-	-	0	-	-	-	-	-	0	-	-	-	-	-
Oil and Grease	Milligrams per Litre	Weekly	-	10	0	-	-	-	-	-	0	-	-	-	-	-	0	-	-	-	-	-
pH	pH	Weekly	6.5	8.5	0	-	-	-	-	-	0	-	-	-	-	-	0	-	-	-	-	-
Phosphorus (Total)	Milligrams per Litre	Weekly	-	0.5	0	-	-	-	-	-	0	-	-	-	-	-	0	-	-	-	-	-
Total Dissolved Solids	Milligrams per Litre	Weekly	-	2000	0	-	-	-	-	-	0	-	-	-	-	-	0	-	-	-	-	-
Total Suspended Solids	Milligrams per Litre	Weekly	-	20	0	-	-	-	-	-	0	-	-	-	-	-	0	-	-	-	-	-
Zinc	Milligrams per Litre	Monthly	-	0.4	0	-	-	-	-	-	0	-	-	-	-	-	0	-	-	-	-	-
		Monthly Samples Collected																				
		Monthly Results Obtained																				
		Monthly Results Published																				
		Quarterly Samples Collected																				
		Quarterly Results Obtained																				
		Quarterly Results Published																				

Pollutant	Units of measure	Licence requirements			October						November						December					
		Monitoring frequency required when discharging	0 percentile limit	100 percentile limit	Number of results	Minimum Value	Mean Value	Median Value	Maximum Value	Exceedance (yes/no)	Number of results	Minimum Value	Mean Value	Median Value	Maximum Value	Exceedance (yes/no)	Number of results	Minimum Value	Mean Value	Median Value	Maximum Value	Exceedance (yes/no)
Biochemical Oxygen Demand	Milligrams per Litre	Weekly	-	20	0	-	-	-	-	-	0	-	-	-	-	-	0	-	-	-	-	-
Chemical Oxygen Demand	Milligrams per Litre	Weekly	-	-	0	-	-	-	-	-	0	-	-	-	-	-	0	-	-	-	-	-
Colour	Hazen	Weekly	-	-	0	-	-	-	-	-	0	-	-	-	-	-	0	-	-	-	-	-
Copper	Milligrams per Litre	Quarterly	-	0.05	0	-	-	-	-	-	0	-	-	-	-	-	0	-	-	-	-	-
Nitrogen (Ammonia)	Milligrams per Litre	Weekly	-	3.0	0	-	-	-	-	-	0	-	-	-	-	-	0	-	-	-	-	-
Nitrogen (Total)	Milligrams per Litre	Weekly	-	15	0	-	-	-	-	-	0	-	-	-	-	-	0	-	-	-	-	-
Oil and Grease	Milligrams per Litre	Weekly	-	10	0	-	-	-	-	-	0	-	-	-	-	-	0	-	-	-	-	-
pH	pH	Weekly	6.5	8.5	0	-	-	-	-	-	0	-	-	-	-	-	0	-	-	-	-	-
Phosphorus (Total)	Milligrams per Litre	Weekly	-	0.5	0	-	-	-	-	-	0	-	-	-	-	-	0	-	-	-	-	-
Total Dissolved Solids	Milligrams per Litre	Weekly	-	2000	0	-	-	-	-	-	0	-	-	-	-	-	0	-	-	-	-	-
Total Suspended Solids	Milligrams per Litre	Weekly	-	20	0	-	-	-	-	-	0	-	-	-	-	-	0	-	-	-	-	-
Zinc	Milligrams per Litre	Monthly	-	0.4	0	-	-	-	-	-	0	-	-	-	-	-	0	-	-	-	-	-
		Monthly Samples Collected																				
		Monthly Results Obtained																				
		Monthly Results Published																				
		Quarterly Samples Collected																				
		Quarterly Results Obtained																				
		Quarterly Results Published																				

Monitoring point

1

Discharge to waters, Effluent quality and volume monitoring

Pollutant	Units of measure	Licence requirements			January						February						March					
		Monitoring frequency required when discharging	0 percentile limit	100 percentile limit	Number of results	Minimum Value	Mean Value	Median Value	Maximum Value	Exceedance (yes/no)	Number of results	Minimum Value	Mean Value	Median Value	Maximum Value	Exceedance (yes/no)	Number of results	Minimum Value	Mean Value	Median Value	Maximum Value	Exceedance (yes/no)
Biochemical Oxygen Demand	Milligrams per Litre	Weekly	-	20	0	-	-	-	-	-	0	-	-	-	-	-	0	-	-	-	-	-
Chemical Oxygen Demand	Milligrams per Litre	Weekly	-	-	0	-	-	-	-	-	0	-	-	-	-	-	0	-	-	-	-	-
Colour	Hazen	Weekly	-	-	0	-	-	-	-	-	0	-	-	-	-	-	0	-	-	-	-	-
Copper	Milligrams per Litre	Quarterly	-	0.05	0	-	-	-	-	-	0	-	-	-	-	-	0	-	-	-	-	-
Nitrogen (Ammonia)	Milligrams per Litre	Weekly	-	3.0	0	-	-	-	-	-	0	-	-	-	-	-	0	-	-	-	-	-
Nitrogen (Total)	Milligrams per Litre	Weekly	-	15	0	-	-	-	-	-	0	-	-	-	-	-	0	-	-	-	-	-
Oil and Grease	Milligrams per Litre	Weekly	-	10	0	-	-	-	-	-	0	-	-	-	-	-	0	-	-	-	-	-
pH	pH	Weekly	6.5	8.5	0	-	-	-	-	-	0	-	-	-	-	-	0	-	-	-	-	-
Phosphorus (Total)	Milligrams per Litre	Weekly	-	0.5	0	-	-	-	-	-	0	-	-	-	-	-	0	-	-	-	-	-
Total Dissolved Solids	Milligrams per Litre	Weekly	-	2000	0	-	-	-	-	-	0	-	-	-	-	-	0	-	-	-	-	-
Total Suspended Solids	Milligrams per Litre	Weekly	-	20	0	-	-	-	-	-	0	-	-	-	-	-	0	-	-	-	-	-
Zinc	Milligrams per Litre	Monthly	-	0.4	0	-	-	-	-	-	0	-	-	-	-	-	0	-	-	-	-	-
		Monthly Samples Collected																				
		Monthly Results Obtained																				
		Monthly Results Published																				
		Quarterly Samples Collected																				
		Quarterly Results Obtained																				
		Quarterly Results Published																				

Pollutant	Units of measure	Licence requirements			April						May						June					
		Monitoring frequency required when discharging	0 percentile limit	100 percentile limit	Number of results	Minimum Value	Mean Value	Median Value	Maximum Value	Exceedance (yes/no)	Number of results	Minimum Value	Mean Value	Median Value	Maximum Value	Exceedance (yes/no)	Number of results	Minimum Value	Mean Value	Median Value	Maximum Value	Exceedance (yes/no)
Biochemical Oxygen Demand	Milligrams per Litre	Weekly	-	20	0	-	-	-	-	-	0	-	-	-	-	-	0	-	-	-	-	-
Chemical Oxygen Demand	Milligrams per Litre	Weekly	-	-	0	-	-	-	-	-	0	-	-	-	-	-	0	-	-	-	-	-
Colour	Hazen	Weekly	-	-	0	-	-	-	-	-	0	-	-	-	-	-	0	-	-	-	-	-
Copper	Milligrams per Litre	Quarterly	-	0.05	0	-	-	-	-	-	0	-	-	-	-	-	0	-	-	-	-	-
Nitrogen (Ammonia)	Milligrams per Litre	Weekly	-	3.0	0	-	-	-	-	-	0	-	-	-	-	-	0	-	-	-	-	-
Nitrogen (Total)	Milligrams per Litre	Weekly	-	15	0	-	-	-	-	-	0	-	-	-	-	-	0	-	-	-	-	-
Oil and Grease	Milligrams per Litre	Weekly	-	10	0	-	-	-	-	-	0	-	-	-	-	-	0	-	-	-	-	-
pH	pH	Weekly	6.5	8.5	0	-	-	-	-	-	0	-	-	-	-	-	0	-	-	-	-	-
Phosphorus (Total)	Milligrams per Litre	Weekly	-	0.5	0	-	-	-	-	-	0	-	-	-	-	-	0	-	-	-	-	-
Total Dissolved Solids	Milligrams per Litre	Weekly	-	2000	0	-	-	-	-	-	0	-	-	-	-	-	0	-	-	-	-	-
Total Suspended Solids	Milligrams per Litre	Weekly	-	20	0	-	-	-	-	-	0	-	-	-	-	-	0	-	-	-	-	-
Zinc	Milligrams per Litre	Monthly	-	0.4	0	-	-	-	-	-	0	-	-	-	-	-	0	-	-	-	-	-
		Monthly Samples Collected																				
		Monthly Results Obtained																				
		Monthly Results Published																				
		Quarterly Samples Collected																				
		Quarterly Results Obtained																				
		Quarterly Results Published																				

Pollutant	Units of measure	Monitoring frequency required when discharging	Yearly Licence requirements								
			Number of results	Minimum Value	Maximum Value	50 percentile limit	50 percentile value	Exceedance (yes/no)	90 percentile limit	90 percentile value	Exceedance (yes/no)
Biochemical Oxygen Demand	Milligrams per Litre	Weekly	0	-	-	14	-	-	18	-	-
Nitrogen (Ammonia)	Milligrams per Litre	Weekly	0	-	-	-	-	-	2.0	-	-
Nitrogen (Total)	Milligrams per Litre	Weekly	0	-	-	4	-	-	7	-	-
Phosphorus (Total)	Milligrams per Litre	Weekly	0	-	-	-	-	-	0.3	-	-
Total Dissolved Solids	Milligrams per Litre	Weekly	0	-	-	1650	-	-	-	-	-

Volume Monitoring	Unit of measure	Monitoring frequency required when discharging	Average Value
Liquids discharged to water	kilolitres per day	Continuous	0

Volume Limit	Unit of measure	Yearly Licence requirements				
		Monitoring frequency required when discharging	Number of results	Volume Limit	Maximum Value	Exceedance (yes/no)
Liquids discharged to water	kilolitres per day	Daily	0	10000	-	-

Monitoring point 2

Discharge to waters, Cooling Water quality and volume monitoring

Pollutant	Units of measure	Licence requirements			July						August						September					
		Monitoring frequency required when discharging	0 percentile limit	100 percentile limit	Number of results	Minimum Value	Mean Value	Median Value	Maximum Value	Exceedance (yes/no)	Number of results	Minimum Value	Mean Value	Median Value	Maximum Value	Exceedance (yes/no)	Number of results	Minimum Value	Mean Value	Median Value	Maximum Value	Exceedance (yes/no)
Biochemical Oxygen Demand	Milligrams per Litre	Monthly	-	-	1	-	< 2	-	-	-	1	-	< 2	-	-	1	-	7	-	-	-	-
Conductivity	Millisiemens per cm	Weekly	-	-	4	84	87	87	90	-	4	72	80	79	92	-	5	68	76	79	81	-
Nitrogen (Total)	Milligrams per Litre	Monthly	-	-	1	-	0	-	-	-	1	-	1	-	-	-	1	-	0	-	-	-
Oil and Grease	Milligrams per Litre	Monthly	-	5	1	-	1	-	-	no	1	-	< 5	-	-	no	1	-	4	-	-	no
pH	pH	Weekly	6.5	8.5	4	7.43	7.51	7.50	7.59	no	4	7.08	7.31	7.34	7.49	no	5	7.24	7.27	7.25	7.36	no
Phosphorus (Total)	Milligrams per Litre	Monthly	-	-	1	-	< 0.01	-	-	-	1	-	< 0.01	-	-	-	1	-	0.04	-	-	-
Total Dissolved Solids	Milligrams per Litre	Monthly	-	200	1	-	42	-	-	no	1	-	54	-	-	no	1	-	37	-	-	no
Total Suspended Solids	Milligrams per Litre	Monthly	-	-	1	-	< 2	-	-	-	1	-	< 2	-	-	-	1	-	< 2	-	-	-
Zinc	Milligrams per Litre	Monthly	-	-	1	-	0	-	-	-	1	-	< 2	-	-	-	1	-	< 2	-	-	-
		Monthly Samples Collected			1 July 2019						5 August 2019						2 September 2019					
		Monthly Results Obtained			6 August 2019						4 September 2019						19 September 2019					
		Monthly Results Published			23 August 2019						6 September 2019						22 September 2019					

Pollutant	Units of measure	Licence requirements			October						November						December					
		Monitoring frequency required when discharging	0 percentile limit	100 percentile limit	Number of results	Minimum Value	Mean Value	Median Value	Maximum Value	Exceedance (yes/no)	Number of results	Minimum Value	Mean Value	Median Value	Maximum Value	Exceedance (yes/no)	Number of results	Minimum Value	Mean Value	Median Value	Maximum Value	Exceedance (yes/no)
Biochemical Oxygen Demand	Milligrams per Litre	Monthly	-	-	1	-	< 2	-	-	-	1	-	< 2	-	-	1	-	< 2	-	-	-	-
Conductivity	Millisiemens per cm	Weekly	-	-	4	70	74	72	83	-	4	68	85	73	125	-	3	72	75	76	76	-
Nitrogen (Total)	Milligrams per Litre	Monthly	-	-	1	-	0	-	-	-	1	-	0	-	-	-	1	-	1	-	-	-
Oil and Grease	Milligrams per Litre	Monthly	-	5	1	-	< 5	-	-	no	1	-	3	-	-	no	0	-	-	-	-	-
pH	pH	Weekly	6.5	8.5	4	7.33	7.36	7.37	7.39	no	4	6.80	7.18	7.18	7.56	no	3	6.84	6.92	6.89	7.02	no
Phosphorus (Total)	Milligrams per Litre	Monthly	-	-	1	-	< 0.01	-	-	-	1	-	< 0.01	-	-	-	1	-	< 0.01	-	-	-
Total Dissolved Solids	Milligrams per Litre	Monthly	-	200	1	-	29	-	-	no	1	-	40	-	-	no	1	-	48	-	-	no
Total Suspended Solids	Milligrams per Litre	Monthly	-	-	1	-	< 2	-	-	-	1	-	< 2	-	-	-	1	-	< 2	-	-	-
Zinc	Milligrams per Litre	Monthly	-	-	1	-	< 2	-	-	-	1	-	< 2	-	-	-	1	-	0	-	-	-
		Monthly Samples Collected			7 October 2019						11 November 2019						2 December 2019					
		Monthly Results Obtained			4 November 2019						3 December 2019						15 January 2020					
		Monthly Results Published			22 November 2019						20 December 2019						25 January 2020					

Monitoring point 2

Discharge to waters, Cooling Water quality and volume monitoring

Pollutant	Units of measure	Licence requirements			January						February						March						
		Monitoring frequency required when discharging	0 percentile limit	100 percentile limit	Number of results	Minimum Value	Mean Value	Median Value	Maximum Value	Exceedance (yes/no)	Number of results	Minimum Value	Mean Value	Median Value	Maximum Value	Exceedance (yes/no)	Number of results	Minimum Value	Mean Value	Median Value	Maximum Value	Exceedance (yes/no)	
Biochemical Oxygen Demand	Milligrams per Litre	Monthly	-	-	1	-	2	-	-	-	0	-	-	-	-	0	-	-	-	-	-	-	
Conductivity	Millisiemens per cm	Weekly	-	-	2	79	82	82	85	-	2	76	82	82	88	-	0	-	-	-	-	-	
Nitrogen (Total)	Milligrams per Litre	Monthly	-	-	1	-	0	-	-	-	0	-	-	-	-	0	-	-	-	-	-	-	
Oil and Grease	Milligrams per Litre	Monthly	-	5	1	-	4	-	-	no	0	-	-	-	-	0	-	-	-	-	-	-	
pH	pH	Weekly	6.5	8.5	2	7.10	7.13	7.13	7.16	no	2	7.18	7.35	7.35	7.51	no	0	-	-	-	-	-	
Phosphorus (Total)	Milligrams per Litre	Monthly	-	-	1	-	< 0.01	-	-	-	0	-	-	-	-	-	0	-	-	-	-	-	
Total Dissolved Solids	Milligrams per Litre	Monthly	-	200	1	-	46	-	-	no	0	-	-	-	-	0	-	-	-	-	-	-	
Total Suspended Solids	Milligrams per Litre	Monthly	-	-	1	-	< 2	-	-	-	0	-	-	-	-	0	-	-	-	-	-	-	
Zinc	Milligrams per Litre	Monthly	-	-	1	-	0	-	-	-	0	-	-	-	-	0	-	-	-	-	-	-	
		Monthly Samples Collected				6 January 2020																	
		Monthly Results Obtained				11 February 2020																	
		Monthly Results Published				14 February 2020																	

Pollutant	Units of measure	Licence requirements			April						May						June						
		Monitoring frequency required when discharging	0 percentile limit	100 percentile limit	Number of results	Minimum Value	Mean Value	Median Value	Maximum Value	Exceedance (yes/no)	Number of results	Minimum Value	Mean Value	Median Value	Maximum Value	Exceedance (yes/no)	Number of results	Minimum Value	Mean Value	Median Value	Maximum Value	Exceedance (yes/no)	
Biochemical Oxygen Demand	Milligrams per Litre	Monthly	-	-	0	-	-	-	-	-	0	-	-	-	-	0	-	-	-	-	-	-	
Conductivity	Millisiemens per cm	Weekly	-	-	0	-	-	-	-	-	0	-	-	-	-	0	-	-	-	-	-	-	
Nitrogen (Total)	Milligrams per Litre	Monthly	-	-	0	-	-	-	-	-	0	-	-	-	-	0	-	-	-	-	-	-	
Oil and Grease	Milligrams per Litre	Monthly	-	5	0	-	-	-	-	-	0	-	-	-	-	0	-	-	-	-	-	-	
pH	pH	Weekly	6.5	8.5	0	-	-	-	-	-	0	-	-	-	-	0	-	-	-	-	-	-	
Phosphorus (Total)	Milligrams per Litre	Monthly	-	-	0	-	-	-	-	-	0	-	-	-	-	0	-	-	-	-	-	-	
Total Dissolved Solids	Milligrams per Litre	Monthly	-	200	0	-	-	-	-	-	0	-	-	-	-	0	-	-	-	-	-	-	
Total Suspended Solids	Milligrams per Litre	Monthly	-	-	0	-	-	-	-	-	0	-	-	-	-	0	-	-	-	-	-	-	
Zinc	Milligrams per Litre	Monthly	-	-	0	-	-	-	-	-	0	-	-	-	-	0	-	-	-	-	-	-	
		Monthly Samples Collected																					
		Monthly Results Obtained																					
		Monthly Results Published																					

Volume Monitoring	Unit of measure	Monitoring frequency required when discharging	Average Value
Liquids discharged to water	kilolitres per day	Continuous	42

Yearly Licence requirements						
Volume Limit	Unit of measure	Monitoring frequency required when discharging	Number of results	Volume Limit	Maximum Value	Exceedance (yes/no)
Liquids discharged to water	kilolitres per day	Daily	28	10000	1337	no

**Monitoring Point 7**
**Maryvale effluent reuse system volume monitoring**

Volume Monitoring	Unit of measure	Monitoring frequency required	Average Value	Maximum Value
Maryvale Effluent Storage Dam	kilolitres per day	Continuous	7782	13528

**Monitoring point 10**
**Soil Monitoring**

See separate PDF report titled 'Soil Properties Report'

**Monitoring point 11**
**Discharge to Air, Air Emissions Monitoring**

Pollutant	Units of measure	Monitoring frequency required	Number of results	July	August	September	October	November	December	January	February	March	April	May	June
Coarse Particulates	Milligrams per cubic meter	2 times a year	1					34							
Fine Particulates	Milligrams per cubic meter	2 times a year	1					63							
Nitrogen Oxides	Milligrams per cubic meter	2 times a year	1					291							
Bi-annual Samples Collected								11 Nov 19							
Bi-annual Results Obtained								7 Jan 20							
Bi-annual Results Published								25 Jan 20							

**Monitoring point 13**
**Effluent quality monitoring - 4 Day Pond Outlet**

Pollutant	Units of measure	Monitoring frequency required when discharging	July	August	September	October	November	December	January	February	March	April	May	June
Biochemical Oxygen Demand	Milligrams per Litre	Monthly	5	8	8	8	15	16	12					
Nitrogen (Total)	Milligrams per Litre	Monthly	2.7	3.0	1.5	3.2	1.4	2.9	7.6					
pH	pH	Monthly	7.7	8.0	7.9	7.9	7.7	7.8	7.6					
Phosphorus (Total)	Milligrams per Litre	Monthly	0.15	0.09	0.42	0.69	0.40	0.65	0.82					
Total Dissolved Solids	Milligrams per Litre	Monthly	752	866	718	796	910	892	324					
Total Suspended Solids	Milligrams per Litre	Monthly	4	5	10	10	4	10	0					
Zinc	Milligrams per Litre	Monthly	0.02	0.06	0.01	0.03	0.00	0.03	0.02					
Monthly Samples Collected			1 Jul 19	5 Aug 19	2 Sep 19	7 Oct 19	11 Nov 19	2 Dec 19	6 Jan 20					
Monthly Results Obtained			6 Aug 19	4 Sep 19	19 Sep 19	4 Nov 19	3 Dec 19	15 Jan 20	11 Feb 20					
Monthly Results Published			23 Aug 19	6 Sep 19	22 Sep 19	22 Nov 19	20 Dec 19	25 Jan 20	14 Feb 20					

Monitoring points

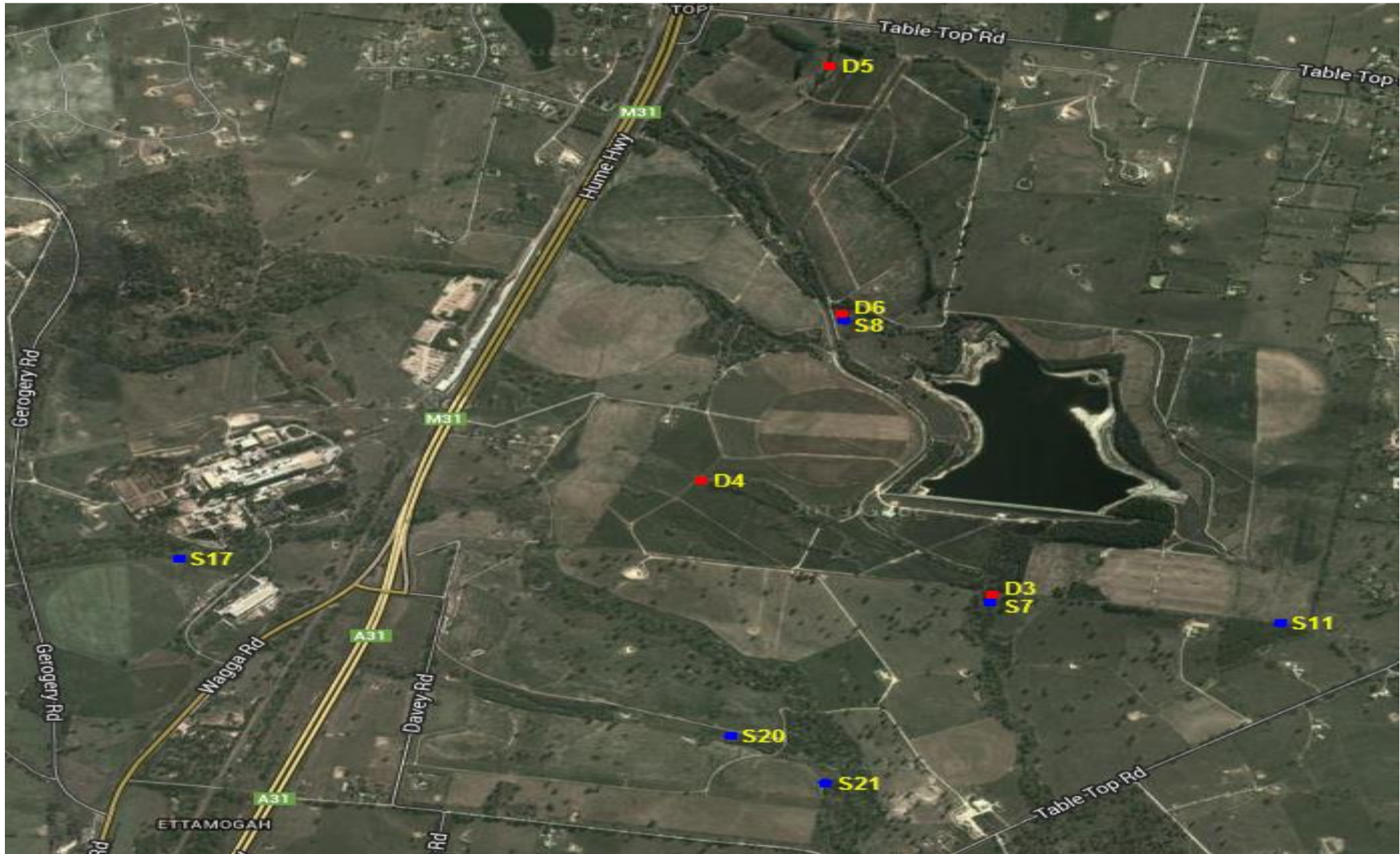
14 to 23

Groundwater quality monitoring

	Month	August			November			February			May			
		Pollutant	Standing Water Level	pH	Conductivity	Standing Water Level	pH	Conductivity	Standing Water Level	pH	Conductivity	Standing Water Level	pH	Conductivity
			Units of measure	Meters		microsiemens per centimeter	Meters		microsiemens per centimeter	Meters		microsiemens per centimeter	Meters	
Deep Bores	3	44.7	7.2	914	44.7	6.9	912	45.3	7.2	931				
	4	44.7	7.3	3449	44.7	7.5	3439	44.7	7.5	3524				
	5	45.3	6.8	5205	45.3	7.3	5143	45.2	7.1	5265				
	6	42.7	8.1	695	43.4	8.1	700	44.5	8.0	708				
Shallow Bores	7	10.6	7.3	3891	10.6	7.3	3910	10.7	7.4	3891				
	8	2.5	7.4	1132	Dry			Dry						
	11	7.0	7.0	7079	7.1	7.1	7108	7.4	7.1	7359				
	17	Dry			Dry			Dry						
	20	Dry			Dry			Dry						
	21	7.9	7.1	2296	7.1	7.2	2327	8.4	7.3	2356				
3 Monthly Samples Collected		15 Aug 19			20 Nov 19			15 Jan 20						
3 Monthly Results Obtained		27 Aug 19			29 Nov 19			24 Jan 20						
3 Monthly Results Published		06 Sep 19			20 Dec 19			25 Jan 20						

Pollutant	Units of measure	Deep Bores				Shallow Bores					
		3	4	5	6	7	8	11	17	20	21
Nitrate	Milligrams per Litre	0.04	0.02	0.03	0.09	0.02	1.50	3.28			4.40
Total Nitrogen	Milligrams per Litre	1.4	9.0	5.5	2.0	0.9	3.2	0.9			8.2
Total Phosphorus	Milligrams per Litre	0.23	0.04	0.02	0.02	1.07	0.09	0.06			0.17
Annual Samples Collected		15 Aug 19	15 Aug 19	15 Aug 19	15 Aug 19	15 Aug 19	15 Aug 19	15 Aug 19	Bore Dry	Bore Dry	15 Aug 19
Annual Results Obtained		27 Aug 19	27 Aug 19	27 Aug 19	27 Aug 19	27 Aug 19	27 Aug 19	27 Aug 19			27 Aug 19
Annual Results Published		06 Sep 19	06 Sep 19	06 Sep 19	06 Sep 19	06 Sep 19	06 Sep 19	06 Sep 19			06 Sep 19

Ettamogah Site map showing Groundwater Bores



Note: Shallow Bores are denoted with blue markers and Deep Bores are denoted by red markers. The water quality of 8 and 9 mile creeks are also monitored, but are not required to be reported by EPL 1272

**Non compliance log**

Pollutant	Sample dates	Detail

**Correction log**

Sample date and time	Original data	Corrected data	Date corrected	Date originally published	Reason

**Community Complaints**

Complaint	Date	Detail