

The Organization

Norske Skog Australasia Pty Ltd, incorporating Norske Skog Tasman Ltd

Level 7, 465 Victoria Avenue, Chatswood, NSW 2067
Australia



has been assessed and certified as meeting the requirements of

FSC® Chain-of-Custody

The company was assessed against the following standards:
FSC-STD-40-003 V2-1 Chain of Custody Certification of Multiple Sites – November 2014,
FSC-STD-40-004 Version 3.0 FSC Standard for Chain of Custody Certification – April 2017,
FSC-STD-40-005 V3-1 Requirements for Sourcing FSC® Controlled Wood – February 2017
FSC-STD-50-001 Requirements for use of the FSC trademarks by Certificate Holders

The Scope of registration appears on the page 2 of this certificate

This certificate is valid from 26 February 2019 until 25 February 2024
and remains valid subject to satisfactory surveillance audits.
Recertification audit due before 25 January 2024
Issue 6. Certified since February 2009
SGS Ref # AU09/3321

This is a multi-site certification scheme
Additional site details are listed on the subsequent page

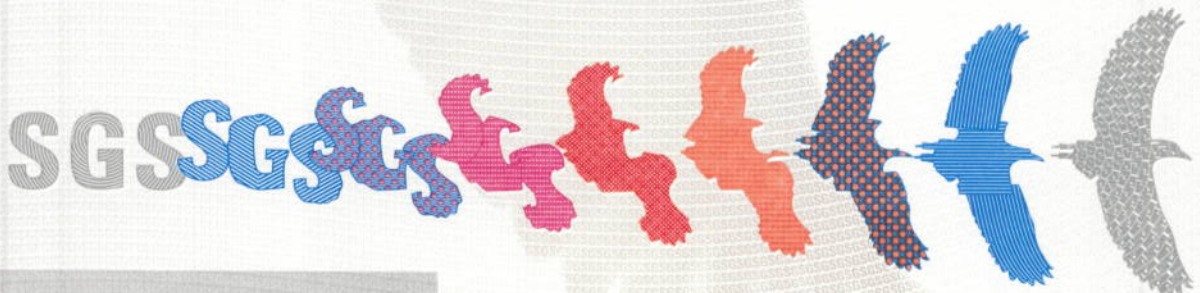
Authorised by

SGS South Africa (Pty) Ltd
PO Box 90, Gallo Manor, 2052, Huawei Office Park, Building 1, Western Service Road, Woodmead
Johannesburg, 2191, South Africa
t +27 (0) 11 800-1000 f +27 (0) 11 800-1020 <http://www.sgs.com/en/Agriculture-Food/Forestry/>



**The mark of
responsible forestry**

The validity of this certificate shall be verified on <http://info.fsc.org/>
For the full list of product groups covered by the certificate see <http://info.fsc.org/>
This certificate itself does not constitute evidence that a particular product supplied by the certificate holder is FSC-certified [or FSC Controlled Wood].
Products offered, shipped or sold by the certificate holder can only be considered covered by the scope of this certificate when the required FSC claim is
clearly stated on sales and delivery documents
This certificate remains the property of SGS. The certificate and all copies or reproductions shall be returned or destroyed if requested by SGS.





**Norske Skog Australasia Pty Ltd,
incorporating Norske Skog Tasman
Ltd**

FSC® Chain-of-Custody



Issue 6

Detailed scope

The purchase of FSC 100% and Controlled pine logs and FSC 100%, FSC Mix, FSC Controlled Wood and Controlled Wood sawmill chips for the production (credit system) at the Tasman mill and procurement from external mills (transfer system) and sales of FSC Mix and FSC recycled paper at the Australasian Sales office.

The covered products and processes are performed by the network of sites, and not necessarily by each of them

Additional facilities

**Norske Skog Tasman Mill
Fletcher Avenue, Kawerau , 3169, New Zealand**



**The mark of
responsible forestry**